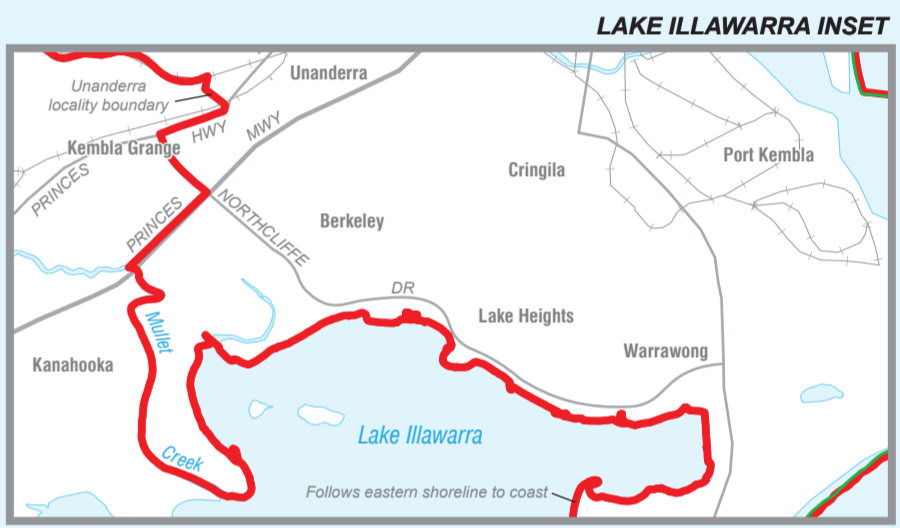
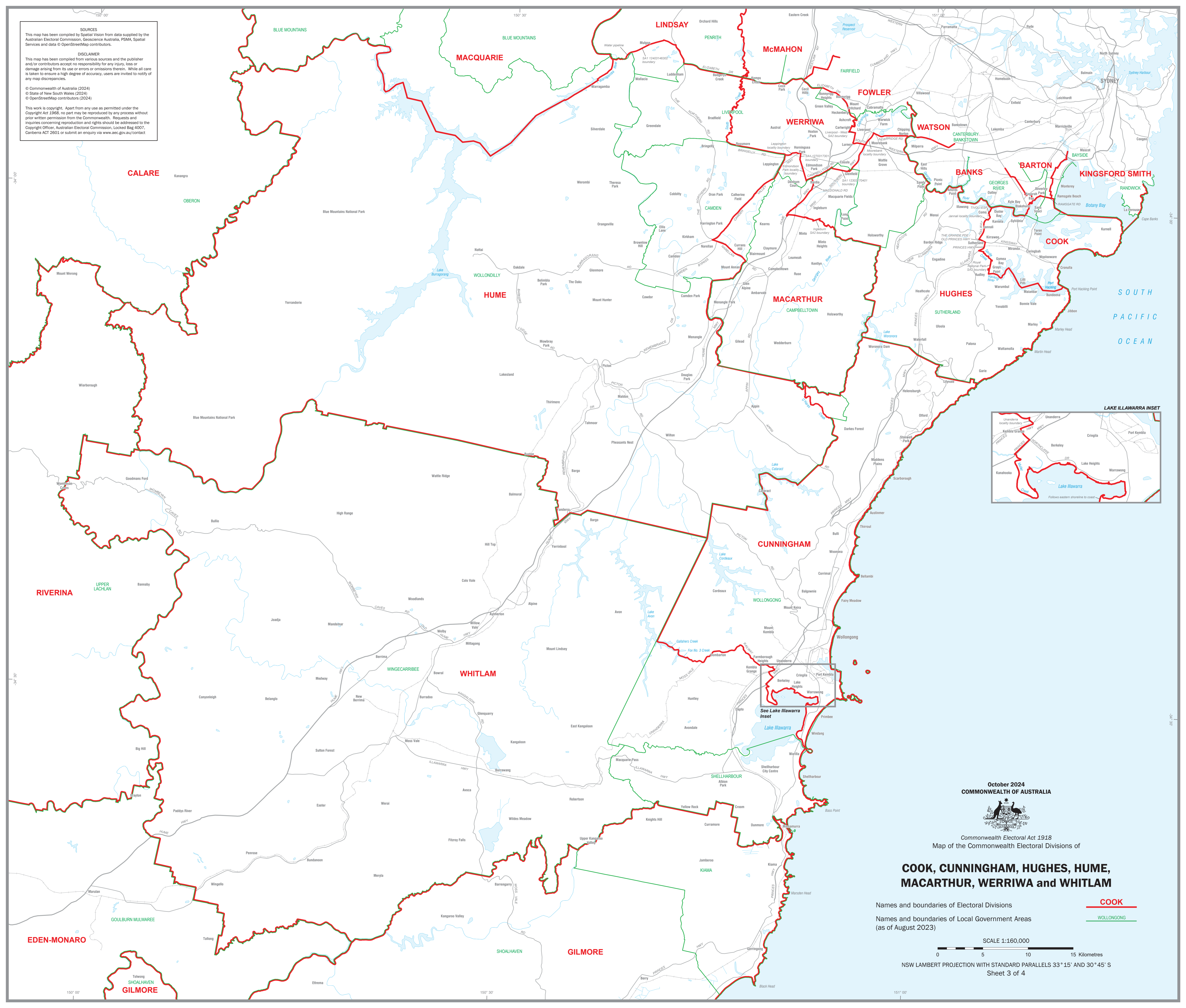


SOURCES
 This map has been compiled by Spatial Vision from data supplied by the Australian Electoral Commission, Geoscience Australia, PSMA, Spatial Services and data © OpenStreetMap contributors.

DISCLAIMER
 This map has been compiled from various sources and the publisher and/or contributors accept no responsibility for any injury, loss or damage arising from its use or errors or omissions therein. While all care is taken to ensure a high degree of accuracy, users are invited to notify of any map discrepancies.

© Commonwealth of Australia (2024)
 © State of New South Wales (2024)
 © OpenStreetMap contributors (2024)

This work is copyright. Apart from any use as permitted under the Copyright Act 1968, no part may be reproduced by any process without prior written permission from the Commonwealth. Requests and inquiries concerning reproduction and rights should be addressed to the Copyright Officer, Australian Electoral Commission, Locked Bag 4007, Canberra ACT 2601 or submit an enquiry via www.aec.gov.au/contact



October 2024
COMMONWEALTH OF AUSTRALIA

 Commonwealth Electoral Act 1918
 Map of the Commonwealth Electoral Divisions of

COOK, CUNNINGHAM, HUGHES, HUME, MACARTHUR, WERRIWA and WHITLAM

Names and boundaries of Electoral Divisions
 Names and boundaries of Local Government Areas
 (as of August 2023)

SCALE 1:160,000
 0 5 10 15 Kilometres
 NSW LAMBERT PROJECTION WITH STANDARD PARALLELS 33° 15' AND 30° 45' S
 Sheet 3 of 4

COOK
 WOLLONGONG