



**THE FEDERAL
REDISTRIBUTION
NEW SOUTH WALES**

Objection 421

Darren McSweeney

30 pages

Objection

Redistribution of Commonwealth Electoral Divisions

Darren McSweeney



New South Wales 2023

Sea Cliff Bridge, Pacific Ocean, Clifton
Photo by [Dmitry Osipenko](#) on [Unsplash](#)

This Public Objection was lodged 10 July 2024 by
Darren McSweeney
an Australian Citizen, resident of Victoria, and member of the Australian Public Service.

████████████████████ Carrum Downs Victoria

████████████████

████████████████

<http://mcsw.ee>

I acknowledge the traditional custodians of the land on which I live and write, the Bunurong people of the Kulin nation. I pay my respects to their Elders, past and present.

Every effort has been made to ensure data and calculations in this submission are accurate, however unintended errors or omissions of data or calculations still may occur. The author has not attempted to mislead readers by way of errors or omissions in the data presented herein.

References and data sources

This product (submission) incorporates data that is © Commonwealth of Australia ([Australian Electoral Commission](#)) 2023 and 2024

Division spatial data are derived from the digital datasets provided by the Australian Electoral Commission. Original data files in .shp format were edited for mapping in [QGIS](#) and converted to .kml format within [Google Earth](#) and .GeoJSON format for presentation in maps.

Other spatial data, including Local Government Areas, are provided by Australian Bureau of Statistics [Australian Statistical Geography Standard \(ASGS\) Edition 3](#), under [Creative Commons Attribution 4.0 International](#) licencing.

Maps within this submission are created by and incorporate map data that are © [Mapbox](#) and © [OpenStreetMap](#) and their data sources.

Cover photograph for illustration may have been cropped or resized from the original image on [Unsplash](#) and use complies with licence terms.

Political disclaimer

The views, opinions, arguments and recommendations presented in this Objection to the redistribution of electoral divisions of New South Wales are the author's own and in no way reflect the views of Services Australia, the Australian Public Service or Australian Government.

My right to hold and express views as an Australian Citizen is [protected under Australian law](#).

Exercising this right to participate in public and political debate by lodging this public submission in no way affects my capacity to fulfill my duties in a professional, impartial, and apolitical manner.

This submission complies with conditions of employment in the Australian Public Service (APS) in accordance with the *Public Service Act 1999*, the [APS Values, Code of Conduct and Employment Principles](#), and [Social media: Guidance for Australian Public Service Employees and Agencies](#)

I hold no interest in, and do not stand to receive any benefit or advantage resulting from the outcome of this redistribution. I have written this submission as a private citizen taking a personal interest in psephology and the electoral redistribution process. I am not now, nor at any time in the past been a member of any political party or similar associated organisation.

This submission is lodged claiming political neutrality. No political bias or partiality is implied within this submission and none should be inferred. This submission is lodged in accordance with [guidelines for making public submissions to a redistribution](#). The political implications – if any – of the recommendations have not formed part of the recommendation and should not be inferred.

Division names – including any suggested new names– comply with [guidelines for naming federal electoral divisions](#). Suggested names are based on the individual's merit and contribution to Australian society, and do not imply any political bias towards the eponymous persons. Proposals to abolish or rename a division – if any – do not reflect the performance or character of the current member of Parliament representing that division or the eponymous person, unless specified.

Criticism of submissions or decisions taken as part of this redistribution is based solely on the merit of the arguments and recommendations presented therein and serves solely to improve electoral representation for the people of New South Wales. It is not in any way a reflection upon the character or abilities of any individual, government or community group or organisation participating in this process, nor any member of a Redistribution Committee, augmented Electoral Commission, any other member of the APS, the Australian Electoral Commission, any other Australian Government entity, agency, department or any current or past member of Parliament.

Contents

Introduction..... 3

Analysis of proposed divisions..... 5

 Methodology..... 5

 Banks 6

 Barton..... 6

 Bennelong..... 6

 Berowra 7

 Blaxland..... 7

 Bradfield..... 7

 Calare..... 7

 Chifley..... 8

 Cook..... 8

 Cowper 8

 Cunningham 9

 Dobell..... 9

 Eden-Monaro..... 9

 Farrer 9

 Fowler 10

 Gilmore..... 10

 Grayndler 10

 Greenway..... 10

 Hughes..... 11

 Hume 11

 Hunter..... 11

 Kingsford Smith..... 12

 Lindsay..... 12

 Lyne..... 12

 Macarthur 13

Mackellar 13

Macquarie 13

McMahon 14

Mitchell 14

Newcastle 14

New England 15

North Sydney 15

Page 15

Parkes 15

Parramatta 16

Paterson 16

Reid 16

Richmond 16

Riverina 17

Robertson 17

Shortland 17

Sydney 18

Warringah 18

Watson 18

Wentworth 19

Werriwa 19

Whitlam 19

Suggested changes to proposed division boundaries 20

Introduction

Following the disorganisation of the Victorian redistribution, my hopes were not great for this proposed redistribution in New South Wales. However, I was pleasantly surprised to see that the Committee has made a reasonable attempt at a proposal, all things considered. I suppose this is the difference between having valuable suggestions based on accurate projections, unlike in Victoria, where all the suggestions were based on wildly inaccurate figures, and were therefore completely useless to the Committee.

Of course there are still several areas that could have, and indeed should have been rectified, in some cases these were left as the status quo, but in some cases, changes proposed actually make things worse for community of interests. But, overall, I have few issues with many of the decisions taken.

Again, I would like to request that the reasoning and justification for choosing to include certain communities within certain divisions be included in the report. The current format of the report is merely a description of which communities are transferred with very little reasoning given, other than indicating which suggestion supported the same configuration. This makes it hard to determine if the best community of interests criteria have been considered.

I would also prefer if the descriptions of various decisions were presented as they used to be described "in the manner in which they relate to one another" instead of alphabetical order. The current presentation can make it difficult to establish which areas are transferred between divisions, and which communities are not transferred.

I have noticed a tendency in the current redistributions, including Western Australia and Victoria, to rely on SA1 boundaries for divisions instead of using SA1 boundaries that align with physical features or other established borders, such as LGA or suburb boundaries. I worry that this could lead to confusion among electors as to the exact position of the division boundary.

Finally I would like to thank for their collaborative effort, Ben Raue at the Tally Room website (tallyroom.com.au), and several of the regular contributors there whose collective ideas have helped form my opinions in the objection. I hope to see many of their ideas presented as unifying and supporting objections.

I fully support and commend the Committee's decision to rededicate the division of **COOK** for The Rt Hon Sir Joseph Cook CGMG. I am glad that the oversight of this has been rectified.

I support abolition of **NORTH SYDNEY**. There was a need for a division to be abolished in the North Shore, or northern suburbs. The results cascading from this abolition, while not entirely matching my own suggestion, do make logical sense and I think effective representation in these areas is maintained.

I am dismayed to see that the area around Kogarah and Rockdale is still split and separated from **BARTON**. However, it seems to be exacerbated here, by now splitting this community three ways to include part of it in **KINGSFORD SMITH**. This decision has really left this community isolated from the majority of **KINGSFORD SMITH**. The Sydney Airport is a significant barrier, and there is no real communication or transport between these areas. The fact they both form part of the Bayside LGA is not sufficient justification, as it was well established that the Bayside LGA is not representative of the real community of interests in this area.

If this wasn't bad enough, a very small portion of this community is still isolated and included in **COOK**. While there is at least transport links across the Georges River, the effect of reducing this cross-river community in size means they are at risk of being overlooked by their local member, who will obviously have more focus on the Sutherland LGA area.

The decision here has flow on effects throughout the south west of Sydney, Illawarra and right down the south coast to **EDEN-MONARO**. The division of **HUGHES** remains divided between Sutherland and Liverpool LGAs, with large swathes of empty space between the various separate communities. This causes issues with **WERRIWA**, **MACARTHUR** and **FOWLER**. The fact that **COOK** cannot contain all of Sutherland LGA, and **HUGHES** stretches westward means **CUNNINGHAM** starts at the Wollongong LGA. Instead, it could have picked up the remainder of Sutherland LGA, and allowed **WHITLAM** to take more of Wollongong and Shoalhaven LGAs. This would have allowed **WHITLAM** to lose the Southern Highlands and made more effective community of interests in the Illawarra region.

The major concern with **WHITLAM** was not so much about **WHITLAM** intruding into the Southern Highlands (although that remains an issue), but more so that the communities in **HUME** were almost completely split into two. Thankfully, with Goulburn moving into **EDEN-MONARO**, and **HUME** retracting into Camden and the outskirts of Sydney, this has been alleviated.

Further afield, there is little to be concerned about in the rural divisions. The changes here seem logical and I have no objections to any changes made here. Likewise, the divisions along the Central Coast, Hunter Valley and Pacific north coast. While I would obviously like to see all the main towns along the coast become the focus of their own divisions again, I acknowledge that this is impossible without at least one of the divisions crossing the range into **NEW ENGLAND**. For the meantime, we are stuck with both Coffs Harbour and Port Macquarie being combined in **COWPER**.

I will provide an analysis and assessment of each proposed division, rating the proposed divisions on how well they adhere to the criteria specified in section 66(3)(b) of the Electoral Act. Following my analysis, I will present my own suggested changes to the proposed divisions.

Analysis of proposed divisions

Methodology

I have assessed each proposed division, and subjectively scored against the criteria outlined in the Electoral Act:

- i. community of interests within the proposed electoral division, including economic, social and regional interests,
- ii. means of communication and travel within the proposed electoral division,
- iv. the physical features and area of the proposed electoral division, and
- v. the boundaries of existing electoral divisions in New South Wales, with this factor being subordinate to the consideration of i, ii and iv.

When assessing the proposed division against the criteria, I am specifically looking for the following:

Criterion i: I am looking at whether the proposed division includes like suburbs and neighbourhoods, whether there are isolated parts of suburbs excluded from the division, or a section of a suburb is included and isolated from the remaining of the suburb in another division.

Criterion ii: whether there is sufficient means of effective travel and lines that make sense and allows both the elected member and electors to travel to other communities within the division. In large rural divisions, electors may be widely dispersed, however they should be able to travel along corridors to reach other communities.

Criterion iv: Assessment includes if the proposed division follows natural contours and barriers – such as rivers and mountains – as well as man-made barriers such as freeways, railways or major highways. In addition, assessment includes whether some parts of the division are physically excluded or isolated by natural features. In cases where a community is physically isolated from all other communities, this is not considered as important.

Criterion v: In many cases, the existing boundaries are useful indicators of community. Long established and unchanged boundaries could be indicators of a clear divide in communities. However, the time can come where certain boundaries need to be breached. A reliance on the existing boundaries to the detriment of, or at the expense of, the other criteria will be scored lower.

Furthermore, an additional criterion is assessed based on the general appearance, compactness and cohesiveness of the division. Divisions that are overly elongated, contorted, twisted, or those that stretch across wide areas of unused land to connect communities can lead to lower communities of interest and lines of communication can be impacted.

Additionally, an overly elongated or twisted division is more likely to be subject to accusations of gerrymandering and perceptions that the division may be drawn in such a manner as to gain political advantage by including or excluding certain communities.

Banks

Community of interests	4
Means of communication	4
Physical features	3
Reliance on existing boundaries	4
General appearance and cohesiveness	4
Overall assessment	19

The proposed **BANKS** is not bad itself. It represents the communities around Revesby and Peakhurst and is neatly enclosed by Milperra and Canterbury Roads. The problem comes from the neighbouring divisions, and particularly the isolated communities along the shore of Botany Bay. I feel like a solution could have been found that included these communities within either **BANKS** or **BARTON**.

Barton

Community of interests	2
Means of communication	4
Physical features	4
Reliance on existing boundaries	2
General appearance and cohesiveness	2
Overall assessment	14

The proposed **BARTON** has decent boundaries and serves community of interests well in the north. However, the issue that the suburbs along the shore of Botany Bay are split out and allocated to other divisions. This reduces the overall community of interests in the whole area. Any changes to accommodate this lost community on Botany Bay mean that strong northern boundary becomes compromised. However, I feel that area is less isolated should be transferred to a division in the north such as **GRAYNDLER** or **WATSON**.

Bennelong

Community of interests	3
Means of communication	4
Physical features	4
Reliance on existing boundaries	4
General appearance and cohesiveness	4
Overall assessment	19

The proposed **BENNELONG** is adequate given the substantial changes elsewhere. Hunters Hill LGA is an obvious inclusion. Lane Cove LGA is somewhat less so, being separated from the rest of the division by the Lane Cove River. The area around Epping has become quite messy, but already is especially in relation to the LGA boundaries, which do not really convey community of interests grounds. Perhaps this northern boundary can be improved with a revision to the whole **PARRAMATTA** area.

Berowra

Community of interests	3
Means of communication	4
Physical features	4
Reliance on existing boundaries	3
General appearance and cohesiveness	3
Overall assessment	17

The inclusion of Epping in **BEROWRA** is a bit of a curiosity. While it's true that North Epping is part of Hornsby LGA, the focus in this area is really more geared toward the Ryde direction. Adding Epping in just seems to make all the boundaries in this area quite disjointed.

Blaxland

Community of interests	4
Means of communication	3
Physical features	4
Reliance on existing boundaries	5
General appearance and cohesiveness	4
Overall assessment	20

The changes here in **BLAXLAND** are actually quite reasonable. I quite like that the division is moving out of Bankstown and seems to be mostly focussed on the eastern part of Cumberland LGA. Using the A6 roads provides a clear strong boundary in the east of the division. While east-west communication and transport in the area is limited, overall, this division is coherent.

Bradfield

Community of interests	4
Means of communication	5
Physical features	5
Reliance on existing boundaries	5
General appearance and cohesiveness	4
Overall assessment	23

Removing all of Hornsby LGA from **BRADFIELD** means that most, but not all, of Willoughby LGA can be included from the abolished **NORTH SYDNEY**. Using the LGA boundary means a clear boundary. I do fear that trying to consolidate two whole LGAs within the one division may lead to isolated pockets of either division over time.

Calare

Community of interests	5
Means of communication	5
Physical features	5
Reliance on existing boundaries	5
General appearance and cohesiveness	5
Overall assessment	25

With no changes, the community of interests is maintained. The issue of the division not containing its eponymous feature, the Lachlan River has been raised by some suggestions, however I think name changes to divisions with other, more obvious geographic names, should be considered before Calare.

Chifley

Community of interests	3
Means of communication	4
Physical features	4
Reliance on existing boundaries	3
General appearance and cohesiveness	2
Overall assessment	16

Expanding **McMAHON** north of the Great Western Highway, and into **CHIFLEY** is not a bad idea, in and of itself. However, the way it has been achieved here has resulted in splitting the suburb of Blacktown three ways now instead of the existing two. Here, it leaves a lot of the suburbs that rely on Blacktown to separated from the major part of Blacktown, and leaving these suburbs without a focal point.

Cook

Community of interests	2
Means of communication	3
Physical features	2
Reliance on existing boundaries	2
General appearance and cohesiveness	4
Overall assessment	13

Including Grays Point and expanding **COOK** westward into **HUGHES** and Sutherland LGA is logical. This could have been expanded further to reach the Woronora River, giving a strong natural feature as a boundary. This would have allowed the most glaring issue with **COOK** to be rectified and mean all of the land north of the Georges River could have been relinquished to Banks or Barton, where it should be. In turn it would have allowed a more focussed **HUGHES** and likely have improved the configuration of divisions all over the south and west of Sydney.

Cowper

Community of interests	3
Means of communication	5
Physical features	5
Reliance on existing boundaries	4
General appearance and cohesiveness	4
Overall assessment	21

I would like to see a **COWPER** with all of Coffs Harbour LGA included, along with all of Port Macquarie returned to **LYNE**, however I acknowledge this would require a major reconfiguration of all divisions in the area. Therefore, the changes to **COWPER** are logical.

Cunningham

Community of interests	3
Means of communication	4
Physical features	5
Reliance on existing boundaries	2
General appearance and cohesiveness	3
Overall assessment	17

Not much has changed in **CUNNINGHAM**, which is disappointing, as the whole area could have improved community of interests with a more ambitious proposal. Using the Wollongong LGA boundary in the north is less than ideal here. The communities of Heathcote and Waterfall probably have more affinity with Helensburgh and the Illawarra, so could easily be accommodated in **CUNNINGHAM**. By applying a minimal approach here, we are left with sub-optimal divisions in **COOK**, **HUGHES**, and **WHITLAM**.

Dobell

Community of interests	4
Means of communication	4
Physical features	4
Reliance on existing boundaries	4
General appearance and cohesiveness	4
Overall assessment	20

No changes to this division maintains the existing community of interests which mostly follow the former Wyong LGA boundaries. I wonder if it may improve community of interests if it were to include the parts of Central Coast and Lake Macquarie LGAs between the coast and the lakes.

Eden-Monaro

Community of interests	4
Means of communication	3
Physical features	5
Reliance on existing boundaries	5
General appearance and cohesiveness	4
Overall assessment	21

This version of **EDEN-MONARO** is a vast improvement on the existing division. The exclusion of Snowy Valleys and Yass Valley LGA greatly improves community of interests. The inclusion of Goulburn Mulwarre LGA is logical, but curious. There had always been a reluctance to including Goulburn and Queanbeyan in the same division, but I agree that this is probably a sensible arrangement.

Farrer

Community of interests	4
Means of communication	4
Physical features	5
Reliance on existing boundaries	5
General appearance and cohesiveness	5
Overall assessment	23

No changes Farrer, which is already well established and coherent. In time, a decision will probably be needed as to whether Albury and Wagga Wagga are combined.

Fowler

Community of interests	3
Means of communication	3
Physical features	4
Reliance on existing boundaries	3
General appearance and cohesiveness	3
Overall assessment	16

I was surprised to see few changes to this already awkward division. **FOWLER** should probably have expanded northwards, taking Fairfield and Fairfield Heights from **McMAHON**. This would have allowed **McMAHON** to expand more into Blacktown LGA, improving the neighbouring divisions in the north west. Secondly, it would have allowed **HUGHES** to expand northward taking Liverpool and Chipping Norton, further improving all the divisions in the south and south west.

Gilmore

Community of interests	4
Means of communication	4
Physical features	5
Reliance on existing boundaries	4
General appearance and cohesiveness	4
Overall assessment	21

With only a minor change **GILMORE** there is not much to comment about. The issue would be the potential for improvement across the entire region with more a ambitious change involving **WHITLAM**, **EDEN-MONARO** and **CUNNINGHAM**.

Grayndler

Community of interests	5
Means of communication	4
Physical features	5
Reliance on existing boundaries	4
General appearance and cohesiveness	5
Overall assessment	23

The proposed **GRAYNDLER** is a coherent and compact division with a clear community of interests. It almost seems like the other sub-optimal changes in the whole southern Sydney region were designed to allow **GRAYNDLER** to flourish. An expansion west into the northern part of Burwood may have allowed other divisions to be drawn just as coherently.

Greenway

Community of interests	3
Means of communication	3
Physical features	3
Reliance on existing boundaries	3
General appearance and cohesiveness	3
Overall assessment	15

The changes mean that **GREENWAY** now lacks focus, there is no main centre or town, rather just satellite suburbs of Blacktown. Crossing the long-established Windsor Road boundary may be justified given the similarities that these outer areas share, the actual boundary used between **GREENWAY** and **MITCHELL** is very messy.

Hughes

Community of interests	1
Means of communication	1
Physical features	2
Reliance on existing boundaries	1
General appearance and cohesiveness	1
Overall assessment	7

HUGHES remains the division comprised of the left over bits of south-western Sydney. Heathcote and Waterfall could have been transferred to **CUNNINGHAM**, and **COOK** could have expanded further into Sutherland LGA. To make matters worse here, we've now added a third, separate community in Ingleburn. There is no way to travel from Ingleburn to the rest of the division. So, while areas like Chipping Norton and Heathcote were separate, there was at least one road between them. Now, we have a community with no actual links to the rest of the division. It surely would have been a better option to expand **HUGHES** into Liverpool itself.

Hume

Community of interests	4
Means of communication	4
Physical features	5
Reliance on existing boundaries	5
General appearance and cohesiveness	5
Overall assessment	23

The proposed **HUME** is orders of magnitude better than the current **HUME**. Restricting it to Wollondilly and Camden LGAs as well as the Sydney metropolitan outskirts has improved its community of interests greatly. There is still a slight issue in that the more populated areas of Wollondilly LGA have limited transport corridors with Camden. This division has now significantly changed in character that it no longer resembles the existing division. It could be a prime candidate to warrant a rename to honour a more recent Australian and increase diversity.

Hunter

Community of interests	3
Means of communication	3
Physical features	5
Reliance on existing boundaries	5
General appearance and cohesiveness	4
Overall assessment	20

HUNTER loses Murwillumbah LGA, consolidating itself as a lower to middle Hunter Valley division. I'm not sure that Lake Macquarie LGA really belongs here without including more of Newcastle LGA, as there are few direct communication or transport links between the two regions, but in terms of being an outer Newcastle division, it maintains a level of coherency.

Kingsford Smith

Community of interests	2
Means of communication	2
Physical features	2
Reliance on existing boundaries	3
General appearance and cohesiveness	3
Overall assessment	12

The obvious change here is the inclusion of Brighton-Le-Sands and other suburbs along the western shore of Botany Bay. This area has no connection to the rest of **KINGSFORD SMITH** and really belongs in **BARTON** or **BANKS**. I'm guessing the reasoning used to justify this move is the united Bayside LGA, however this LGA was created only in 2015 as an artificial construction that doesn't accurately reflect the community of interests in the area. A better option would be to move north into either **WENTWORTH** or **SYDNEY**, with both those divisions expanding westward.

Lindsay

Community of interests	4
Means of communication	5
Physical features	5
Reliance on existing boundaries	5
General appearance and cohesiveness	5
Overall assessment	24

Not much change here, with only Emu Plains moving from **LINDSAY** into **MACQUARIE**. This minimalist approach is sensible for **LINDSAY**, but I wonder if it leads to less ideal outcomes further east. Perhaps an alternative with removing some of St Marys or Colyton could have achieved better outcomes in divisions like **MCMAHON**.

Lyne

Community of interests	4
Means of communication	5
Physical features	5
Reliance on existing boundaries	5
General appearance and cohesiveness	5
Overall assessment	24

Obviously, returning Port Macquarie back to **LYNE** would be a priority, but it was not possible without a major reconfiguration across the region. So, given that, no changes to the division is probably the best outcome for **LYNE**.

Macarthur

Community of interests	3
Means of communication	2
Physical features	4
Reliance on existing boundaries	4
General appearance and cohesiveness	4
Overall assessment	18

The proposed **MACARTHUR** is not a terrible division in isolation, although it could be improved. The parts of Camden LGA are physically separated from the rest of the division. The expansion to Denham Court further creates division, especially with the exclusion of Ingleburn into **HUGHES**. I think this could be improved if the entire south-west Sydney is drawn with less reliance on the existing division boundaries.

Mackellar

Community of interests	5
Means of communication	4
Physical features	5
Reliance on existing boundaries	5
General appearance and cohesiveness	5
Overall assessment	24

I fully support the changes to **MACKELLAR** and think the community of interests here have been improved. No longer splitting Dee Why and using the natural boundaries of Greendale Creek and Curl Curl Lagoon is an improvement over the current **MACKELLAR**. The inclusion of Killarney Heights and Forestville is logical.

Macquarie

Community of interests	4
Means of communication	2
Physical features	4
Reliance on existing boundaries	4
General appearance and cohesiveness	4
Overall assessment	18

A minimal approach for **MACQUARIE**. I had suggested transferring part of The Hill LGA, but aligning the boundary with **LINDSAY** along the Nepean River is eminently sensible. There is an ongoing issue that both Blue Mountains and Hawkesbury LGAs are quite separate and besides Darling Causeway or Hawkesbury Road, there are few lines of communication between them.

McMahon

Community of interests	2
Means of communication	1
Physical features	2
Reliance on existing boundaries	3
General appearance and cohesiveness	2
Overall assessment	10

Already a division made of separate pieces, the proposed **McMAHON** exacerbates this by adding more of Blacktown LGA but not really consolidating any parts of the existing **McMAHON**. It might have been better to move it even further into Blacktown, taking in more of **CHIFLEY**, and losing parts of Fairfield LGA to **FOWLER**. This allows **HUGHES** room to expand further into Liverpool LGA. At the same time, it could have allowed improvement with **PARRAMATTA** by shifting **GREENWAY** and **MITCHELL**. In some ways, the awkward **McMAHON** undermines community of interests in the whole southern and western Sydney.

Mitchell

Community of interests	3
Means of communication	2
Physical features	4
Reliance on existing boundaries	3
General appearance and cohesiveness	4
Overall assessment	16

The proposed **MITCHELL** is itself a compact and coherent division. The problem lies with the effects it has on the neighbouring divisions. The mess of boundaries to the east with **PARRAMATTA**, **BEROWRA** and **BENNELONG** could do with significant improvement. Some of these areas naturally fit within **MITCHELL**, rather than relying on the LGA boundaries. Likewise, keeping **MITCHELL** south of the M2 Motorway leads to the awkward extension of **PARRAMATTA** into Blacktown LGA, affecting **GREENWAY** and probably contributes to **McMAHON's** problems.

Newcastle

Community of interests	5
Means of communication	5
Physical features	5
Reliance on existing boundaries	5
General appearance and cohesiveness	5
Overall assessment	25

Maintaining the line south of the LGA boundary means a small portion of Lake Macquarie LGA is included in **NEWCASTLE**, but this keeps the suburb in this area together.

New England

Community of interests	4
Means of communication	4
Physical features	5
Reliance on existing boundaries	5
General appearance and cohesiveness	5
Overall assessment	23

I wasn't sure that Gwydir LGA was needed to be included in **NEW ENGLAND** but the changes seem minor enough to not cause any issues. I support the changes to include Muswellbrook LGA within **NEW ENGLAND**.

North Sydney

Community of interests	
Means of communication	
Physical features	
Reliance on existing boundaries	
General appearance and cohesiveness	
Overall assessment	N/A

I fully support the abolition of **NORTH SYDNEY**. While many objections may discuss representation of the division, and in the area in general, in terms of community of interests, it can be easily absorbed by all of **BENNELONG**, **BRADFIELD** and **WARRINGAH**, with the cascading effect of improving both **MACKELLAR** and **BEROWRA**. Furthermore, while a federation name, the geographic name is restrictive in where it can be located. Combined with the name **NORTH SYDNEY** including a qualifier of existing name of **SYDNEY**, it is not necessary to retain **NORTH SYDNEY** as a division.

Page

Community of interests	4
Means of communication	5
Physical features	5
Reliance on existing boundaries	5
General appearance and cohesiveness	5
Overall assessment	24

I would like to see all of Coffs Harbour LGA returned to **COWPER**, but this is currently impossible unless it were to encroach into **RICHMOND**, or cross the ranges to **NEW ENGLAND**. Therefore, I have no issues with the current **PAGE**.

Parkes

Community of interests	4
Means of communication	4
Physical features	5
Reliance on existing boundaries	5
General appearance and cohesiveness	5
Overall assessment	23

Including Forbes and Parkes LGAs in **PARKES** is sensible. Bland LGA probably fits better if Weddin LGA was also included, but I contend that they are both more similar to **PARKES** than either are to **RIVERINA**, so this makes sense.

Parramatta

Community of interests	2
Means of communication	1
Physical features	3
Reliance on existing boundaries	2
General appearance and cohesiveness	1
Overall assessment	9

A victim of its restrictive geographic name, **PARRAMATTA** is squished between **MITCHELL** and expanding divisions in **BLAXLAND** and **McMAHON**. Had this division had another name, it may have expanded more naturally and coherently. While the expansion into Seven Hills and Blacktown LGA is logical, the small proportion given to **PARRAMATTA** is awkward. **PARRAMATTA** would be better served by crossing Old Windsor and North Rocks Roads into the space taken by **MITCHELL**.

Paterson

Community of interests	4
Means of communication	3
Physical features	5
Reliance on existing boundaries	5
General appearance and cohesiveness	4
Overall assessment	21

The areas removed from **PATERSON** and given to **HUNTER** improve the community of interests for both divisions. Using the Hunter Expressway as the boundary between the two is clear and strong. There could be improvements in the communication and travel corridors between the Maitland and Port Stephens LGAs but overall this division is coherent.

Reid

Community of interests	5
Means of communication	5
Physical features	4
Reliance on existing boundaries	4
General appearance and cohesiveness	5
Overall assessment	23

One of few metropolitan divisions with no changes, Reid has a strong community of interests. There was scope for transferring electors here, if only to help shore up other divisions, but apparently it was not necessary.

Richmond

Community of interests	5
Means of communication	5
Physical features	5
Reliance on existing boundaries	4
General appearance and cohesiveness	5
Overall assessment	24

With no changes needed, and none made, **RICHMOND** stays coherent. Again, this division may be a candidate for a rename in the future, particularly as the Richmond River only briefly reaches the division at Ballina. If a future reconfiguration of Richmond occurs, it will further emphasise that the division is now poorly named.

Riverina

Community of interests	4
Means of communication	4
Physical features	5
Reliance on existing boundaries	5
General appearance and cohesiveness	5
Overall assessment	23

The proposed **RIVERINA**, is inherently better at representing community of interests. Restoring the Snowy Valleys and Yass Valley LGAs improve the lines of communication in this area, with these areas now connected to their focal cities. The issue now is the continuing name of the division, and whether it represents the region. I wonder if maybe this would be better to retire **RIVERINA**, use the name **HUME** for this division, with the proposed **HUME** getting a new division name.

Robertson

Community of interests	4
Means of communication	4
Physical features	5
Reliance on existing boundaries	4
General appearance and cohesiveness	5
Overall assessment	22

With no change, there are few issues with **ROBERTSON**. The boundary, following the now obsolete Gosford LGA boundary may be less defined, although, it luckily does follow suburb boundaries and roads for the most part.

Shortland

Community of interests	5
Means of communication	4
Physical features	5
Reliance on existing boundaries	4
General appearance and cohesiveness	4
Overall assessment	22

The proposed changes to **SHORTLAND** make sense uniting Glendale and other southern suburbs of the Newcastle region. The boundary following Cockle and Brush Creeks is well defined and strong.

Sydney

Community of interests	3
Means of communication	3
Physical features	4
Reliance on existing boundaries	3
General appearance and cohesiveness	4
Overall assessment	17

The only real problem with the proposed **SYDNEY** is the physical separation of the Balmain Peninsula. This is rectified by taking additional territory in Annadale from **GRAYNDLER**. There seems to be a reliance on keeping **SYDNEY** within the Sydney LGA, which restricts both **WENTWORTH** and **KINGSFORD SMITH**. I would have preferred to see **SYDNEY** expand westward, with the southern portion around Roseberry being transferred to **KINGSFORD SMITH** and the eastern sections around Surry Hills given to **WENTWORTH**.

Warringah

Community of interests	4
Means of communication	5
Physical features	5
Reliance on existing boundaries	5
General appearance and cohesiveness	5
Overall assessment	24

An ideal outcome, the proposed **WARRINGAH** is mostly a combination of several distinct communities. These communities while separate, are related and similar in character. The strong boundaries following the North Sydney LGA, deviating along the Crows Nest suburb boundary at Oxley Street are clear and logical.

Watson

Community of interests	4
Means of communication	5
Physical features	5
Reliance on existing boundaries	5
General appearance and cohesiveness	4
Overall assessment	23

The proposed **WATSON** is coherent and has well defined community of interests. It's probably the best drawn division in the area using strong clear boundaries. The only anomaly being the whole Chullora and Rookwood northward reach. This non-residential area doesn't cleanly fit into any of the neighbouring divisions, so being that it has to go somewhere, and has few electors, it might as well stay part the existing **WATSON**.

Wentworth

Community of interests	4
Means of communication	4
Physical features	5
Reliance on existing boundaries	4
General appearance and cohesiveness	4
Overall assessment	21

Overall, the proposal for **WENTWORTH** is decent. The logical expansion westward into **SYDNEY** is clear. Further expansion into Surry Hills instead of southward into Randwick and Clovelly would likely keep community of interests in **KINGSFORD SMITH** without that division needing to cross the airport.

Werriwa

Community of interests	3
Means of communication	4
Physical features	4
Reliance on existing boundaries	2
General appearance and cohesiveness	3
Overall assessment	16

The proposed **WERRIWA** is a well thought out division. It is in relation to other divisions in the area that things become complicated. The obvious issues are **HUGHES** to the south west and **FOWLER** to the north. If the issues in these can be resolved without affecting **WERRIWA**, then this area doesn't need to change at all.

Whitlam

Community of interests	2
Means of communication	3
Physical features	4
Reliance on existing boundaries	3
General appearance and cohesiveness	3
Overall assessment	15

WHITLAM in an of itself is actually quite coherent. Despite the fact, Illawarra and Southern Highlands regions are joined – albeit only by one highway, and a slow and winding one at that. The real issues surrounding **WHITLAM** were always the disconnected **HUME**, and the cascading effect **WHITLAM** had on **CUNNINGHAM** contributing to bad outcomes in both **HUGHES** and **COOK**. Taking the remaining portion of Wingecarribee LGA fixes the **HUME** issue at least.

Suggested changes to proposed division boundaries

I feel that it is pointless and unhelpful to object without providing an alternative solution, so I feel compelled to contribute some specific suggestions to change the proposed redistribution.

There is scope for change in the entire north-west of Sydney, including **CHIFLEY**, **GREENWAY**, **MITCHELL**, **PARRAMATTA**, **McMAHON** and parts of **BEROWRA** and **BENNELONG**. However, I have not been able to make the numbers work with clear boundaries that accurately reflect community of interests, at least in a way that I am comfortable with. So, to this end, I will leave any changes in this area up to other objectors, in hope that I can lend my voice to support these objections through comments on objections.

On the other hand, the need for changes in the inner Sydney, inner-west, southern, and south-western suburbs is pressing. In particular, restoring the area around Kyeemagh, Brighton-le-Sands, Sans Souci and Ramsgate to a division in the St George area. Unfortunately, the scope of this error requires changes to multiple other divisions to bring all divisions in the area into tolerance. However, correcting this also helps improve communities of interests in Hughes and the south west of Sydney. So I propose a rotational effect of transfers starting with **KINGSFORD SMITH**, incorporating **SYDNEY**, **GRAYNDLER**, **WATSON**, **BARTON**, **COOK**, **HUGHES**, **WERRIWA**, and **FOWLER**.

I propose that 10,488 actual and 11,797 projected electors from the portion of SA2 Sans Souci - Ramsgate, proposed to remain in **COOK**, be transferred to **BARTON**

I propose that 10,094 actual and 11,594 projected electors from the portion of SA2 Monterey - Brighton-le-Sands - Kyeemagh, proposed to be transferred to **KINGSFORD SMITH**, instead be transferred to **BARTON**

I propose that 4 actual and 2 projected electors from the portion of SA2 Rockdale - Banksia, proposed to be transferred to **KINGSFORD SMITH**, instead be transferred to **BARTON**

I propose that 1,317 actual and 1,480 projected electors from the portion of SA2 Sans Souci - Ramsgate, proposed to be transferred to **KINGSFORD SMITH**, instead be transferred to **BARTON**

I propose that 5,968 actual and 6,830 projected electors from the portion of SA2 Oyster Bay - Como - Jannali, proposed to remain in **HUGHES**, be transferred to **COOK**

I propose that 2,447 actual and 2,653 projected electors from the portion of SA2 Sutherland - Kirrawee, proposed to remain in **HUGHES**, be transferred to **COOK**

I propose that 9,153 actual and 9,914 projected electors from the portion of SA2 Bass Hill – Georges Hall, proposed to be transferred to **WATSON**, instead be transferred to **FOWLER**

I propose that 9,002 actual and 9,795 projected electors from the portion of SA2 Ashcroft – Busby – Miller, proposed to remain in **WERRIWA**, be transferred to **FOWLER**

I propose that 8,924 actual and 9,832 projected electors from the portion of SA2 Bonnyrigg Heights – Bonnyrigg, proposed to remain in **WERRIWA**, be transferred to **FOWLER**

I propose that 1,204 actual and 1,376 projected electors from the portion of SA2 Cabramatta West – Mount Pritchard, proposed to remain in **WERRIWA**, be transferred to **FOWLER**

I propose that 1,487 actual and 1,728 projected electors from the portion of SA2 Green Valley, proposed to remain in **WERRIWA**, be transferred to **FOWLER**

I propose that 13,537 actual and 15,009 projected electors from the portion of SA2 Earlwood, proposed to remain in **BARTON**, be transferred to **GRAYNDLER**

I propose that 6,572 actual and 7,069 projected electors from the portion of SA2 Chipping Norton – Moorebank, proposed to remain in **FOWLER**, be transferred to **HUGHES**

I propose that 10,048 actual and 11,366 projected electors from the portion of SA2 Liverpool - East, proposed to remain in **FOWLER**, be transferred to **HUGHES**

I propose that 8,594 actual and 9,450 projected electors from the portion of SA2 Liverpool - West, proposed to remain in **FOWLER**, be transferred to **HUGHES**

I propose that 0 actual and projected electors from the portion of SA2 Lurnea – Cartwright, proposed to remain in **FOWLER**, be transferred to **HUGHES**

I propose that 3,553 actual and 4,017 projected electors from the portion of SA2 Warwick Farm, proposed to remain in **FOWLER**, be transferred to **HUGHES**

I propose that 7,863 actual and 9,050 projected electors from the portion of SA2 Lurnea – Cartwright, proposed to remain in **WERRIWA**, be transferred to **HUGHES**

I propose that 5 actual and projected electors from the portion of SA2 Prestons, proposed to remain in **FOWLER**, be transferred to **HUGHES**

I propose that 6,778 actual and 7,606 projected electors from the portion of SA2 Rosebery – Beaconsfield, proposed to remain in **SYDNEY**, be transferred to **KINGSFORD SMITH**

I propose that 5,321 actual and 5,569 projected electors from the portion of SA2 Zetland, proposed to remain in **SYDNEY**, be transferred to **KINGSFORD SMITH**

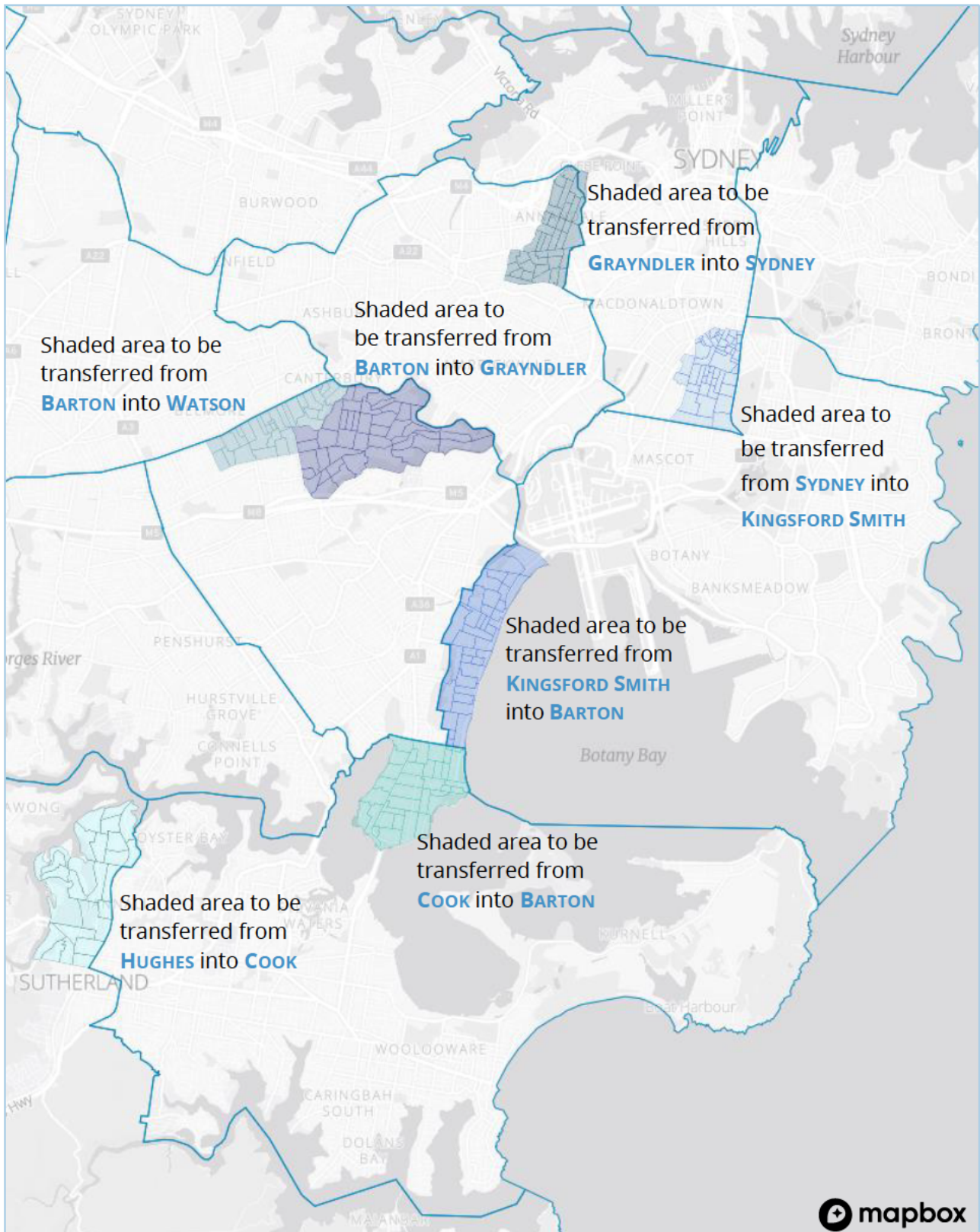
I propose that 6,941 actual and 7,009 projected electors from the portion of SA2 Annandale (NSW), proposed to remain in **GRAYNDLER**, be transferred to **SYDNEY**

I propose that 4,847 actual and 4,654 projected electors from the portion of SA2 Petersham – Stanmore, proposed to remain in **GRAYNDLER**, be transferred to **SYDNEY**

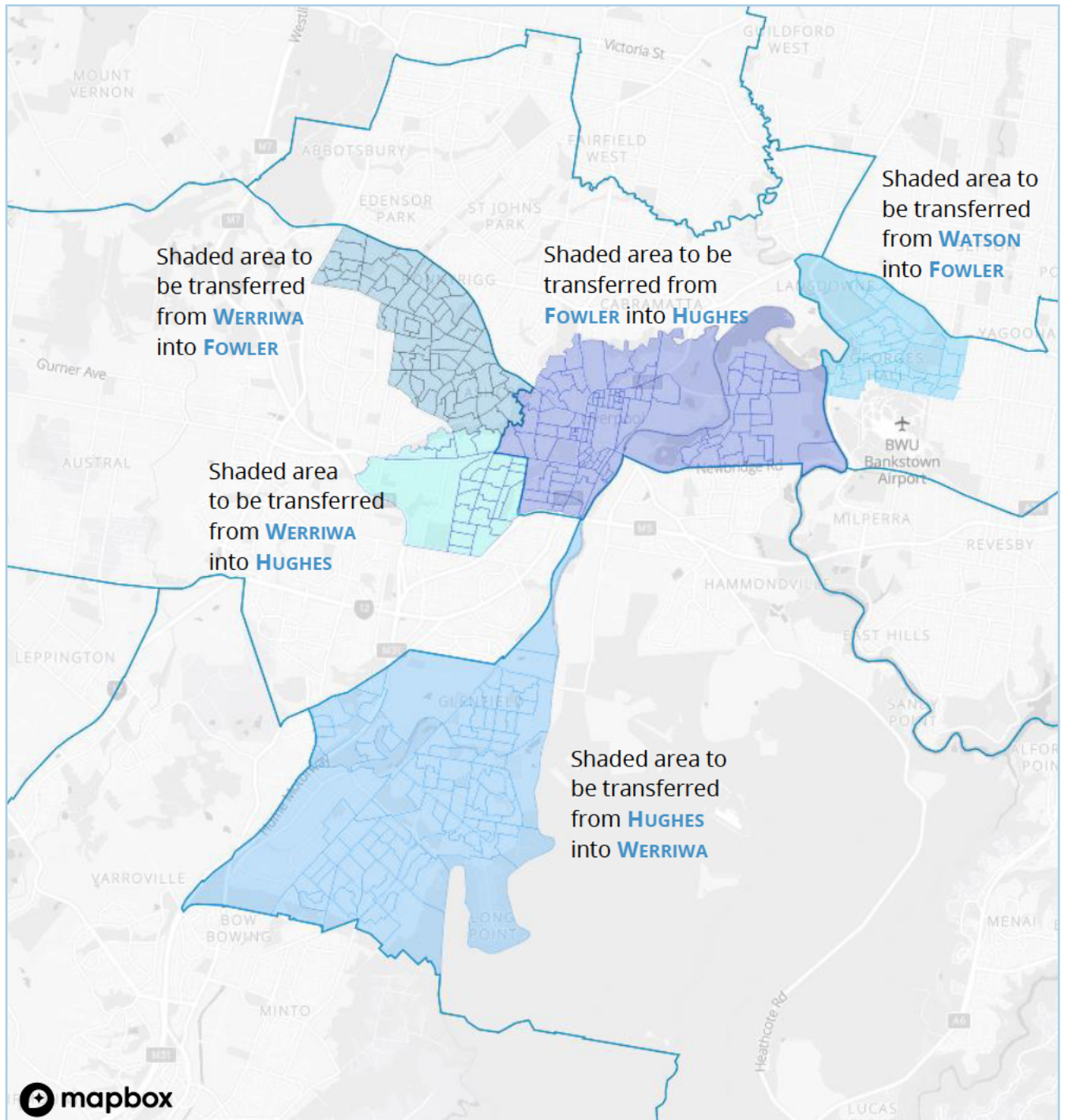
I propose that 283 actual and 302 projected electors from the portion of SA2 Belmore - Belfield, proposed to remain in **BARTON**, be transferred to **WATSON**

I propose that 6,488 actual and 6,719 projected electors from the portion of SA2 Canterbury – South, proposed to remain in **BARTON**, be transferred to **WATSON**

I propose that 1,887 actual and 2,043 projected electors from the portion of SA2 Belmore - Belfield, proposed to be transferred to **BARTON**, remain in **WATSON**



Suggested changes to southern Sydney region - east

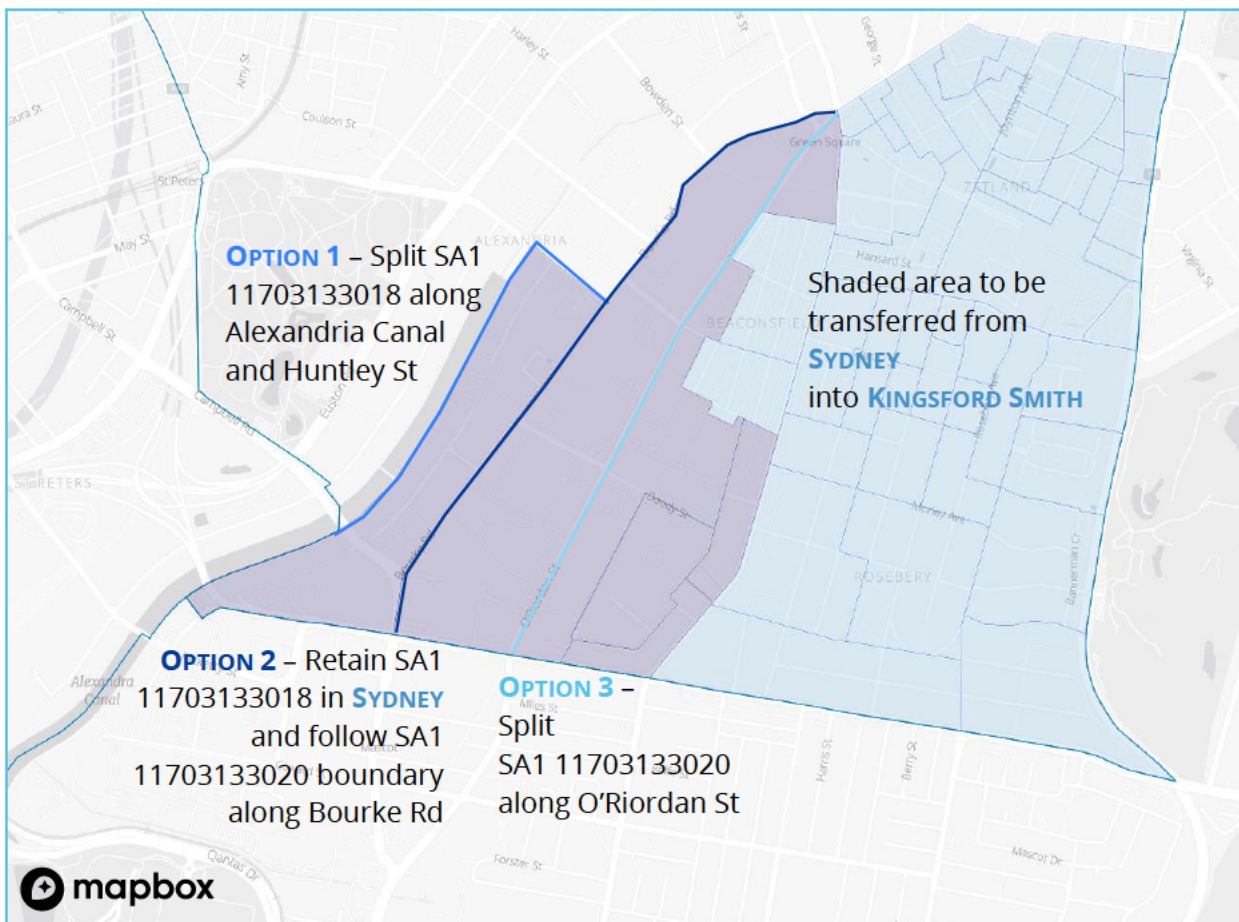


Suggested changes to southern Sydney region - west

An additional small exchange between **SYDNEY** and **KINGSFORD SMITH** could also be included to straighten the boundary in Alexandria. There are three separate options.

- From west the boundary could follow the Alexandria Canal to Huntley Street, then follow Bourke Road to Botany Road. This approach would split SA1 11703133018 but with only 24 actual and 20 projected electors in the SA1 this is negligible.
- A second option in this area is to use Bourke Road for the entire length between Botany Road and Gardiners Road. This would align with the SA1 boundaries.
- The third option is to align the border with O’Riordan Street, which is a major road. This would involve the transfer of the fewest electors but would split the 114 actual and 141 projected electors within the SA1 11703133020. But again, the number of electors is negligible.

I propose that up to 1,013 actual and 1,221 projected electors from the portion of SA2 Erskineville - Alexandria, proposed to remain in **SYDNEY**, be transferred to **KINGSFORD SMITH**



Finally, I propose a small exchange between **FOWLER** and **BLAXLAND** to help provide additional link between the separate parts of **FOWLER**, but this would only be implemented if the other changes to bring Georges Hall into Fowler are completed. This exchange is not required to meet numerical thresholds, and thus I will propose this as a separate transfer.

I propose that 3,584 actual and 4,123 projected electors from the portion of SA2 Fairfield – East, proposed to remain in **FOWLER**, be transferred to **BLAXLAND**

I propose that 2,368 actual and 2,582 projected electors from the portion of SA2 Bass Hill – Georges Hall, proposed to remain in **BLAXLAND**, be transferred to **FOWLER**

I propose that 1 actual and projected electors from the portion of SA2 Chester Hill – Sefton, proposed to remain in **BLAXLAND**, be transferred to **FOWLER**

