



Suggestion 63

Liberal Party of Australia
(Victorian Division)

36 pages

From: Adam Wojtonis
To: [FedRedistribution - VIC](#)
Cc: [Nick Demiris](#)
Subject: Liberal Party of Australia (Victorian Division) Victorian Federal Redistribution Submission
Date: Friday, 17 November 2017 3:23:29 PM
Attachments: [Liberal Party of Australia 2017 Victorian Redistribution Submission.pdf](#)
[ATT00001.htm](#)
[Liberal Party of Australia 2017 Victorian Redistribution SA1 Table.csv](#)
[ATT00002.htm](#)
[Liberal Party of Australia 2017 Victorian Redistribution Boundaries.dat](#)
[ATT00003.htm](#)
[Liberal Party of Australia 2017 Victorian Redistribution Boundaries.id](#)
[ATT00004.htm](#)
[Liberal Party of Australia 2017 Victorian Redistribution Boundaries.map](#)
[ATT00005.htm](#)
[Liberal Party of Australia 2017 Victorian Redistribution Boundaries.tab](#)
[ATT00006.htm](#)

On behalf of the State Director, Nick Demiris, please find attached the Liberal Party's submission to the Redistribution Committee for Victoria, including supporting materials - SA1 table (csv file) and boundaries (dat, id, map, and tab map files).

I kindly ask for confirmation of the receipt of our submission by return email.

Yours sincerely,

Adam Wojtonis

Liberal Party of Australia (Victorian Division)
Level 3, 104 Exhibition Street. Melbourne, VIC, 3000

P: (03) 9654 2255

17 November 2017

Redistribution Committee for Victoria
Australian Electoral Commission
Level 1
Urban Workshop
50 Lonsdale Street
MELBOURNE VIC 3000

Dear Committee Members,

Submission from the Liberal Party of Australia (Victorian Division)

The Liberal Party of Australia (Victorian Division) welcomes the opportunity to make submissions to the Redistribution Committee for Victoria regarding the proposed redistribution of Federal Electorate boundaries in Victoria.

Please find enclosed the written submission of the Liberal Party of Australia (Victorian Division), which includes an executive summary, including an overview of methodology, as well as detailed maps and SA1 lists for each Victorian Federal Division.

The Liberal Party is able to provide additional information should your committee consider it necessary.

Yours sincerely,



Nick Demiris
State Director

Submission to the Redistribution Committee for Victoria

Executive Summary and Methodology

The Australian Electoral Commission (AEC) has determined that the 2017 Victorian Redistribution will result in Victoria gaining an additional division to its current 37 federal divisions, bringing the total number of divisions to 38. Given Victoria's current population and the projected state-wide growth, each division will expand its enrolment quota of constituents by approximately 3,418 to 110,372. Under this submission, each newly configured division will fit within the appropriate population variations, taking into account the 2019 population projections.

In preparing this submission, the requirements outlined in section 66(3) of the Commonwealth Electoral Act 1918 (the Act) have been complied with. These requirements have formed the guiding principles of the submission. This includes giving consideration to economic, social and regional communities of interest within each division, the means of communication and travel within each division, and the physical features of the division such as lakes, rivers, major arterial roads and mountain ranges.

In accordance with the relevant provisions of the Act, this submission ensures that the new boundaries allow for population growth as provided for in the 2019 population projections. Considerable population growth is forecast in the outer north-western suburbs of Melbourne and in parts of the north and south-eastern suburbs. As such, this projected population growth was taken into consideration when re-drawing boundaries in these areas.

The natural starting position for redistributions in Victoria is the rural and regional divisions whose boundaries are formed by Victoria's coastline and the state borders Victoria shares with New South Wales and South Australia. The methodology used to re-draw these boundaries is to start at these coastal and state boundaries and move inwards towards the large regional centres of Bendigo, Ballarat, Geelong, Shepparton, Wangaratta, and of course metropolitan Melbourne. Underpinning this approach is to link smaller regional communities to the larger population centres that they are economically, socially, and regionally connected to by schools, hospitals, employment opportunities and businesses, road and rail connections, and sporting facilities.

In this regard, communities such as Linton, Dereel and Meredith have stronger connections with the population centre in Ballarat, underpinned by transportation, and economic and social links, than they do with the coastal centres in Warrnambool or Geelong. To adhere with the principles of the Act, it is more appropriate for these communities to be in the division of Ballarat than Wannon, or any other division.

On similar lines, communities such as Horsham, Stawell and Ararat have a greater connection to regional communities in the Western District such as Hamilton and Warrnambool than they do to communities on the Murray River such as Mildura and Swan Hill. As such, it is appropriate that the communities of Horsham, Stawell and Ararat are within the Wannon division. The communities of Mildura and Swan Hill along the Murray River share similar issues of community concern with communities in Echuca such as water management and related agricultural issues. As such, it is appropriate for these regional centres to be grouped together as communities of interest within the division of Mallee.

Adhering to the Local Government Area (LGA) boundaries is particularly important in rural and regional Victoria. The population centres in these divisions can be located significant distances apart. Keeping existing LGAs within divisions helps to create some continuity for constituents and reflects the relevant regional communities of interest in these areas. In metropolitan and suburban areas this principle is harder to adhere to, reflecting the greater population density of these communities. In these metropolitan and suburban areas boundaries have been constructed with natural and man-made features in mind. As a matter of methodology, where these issues have arisen, SA1s have been used as a guide and have only been divided where necessary. There may be occasions where the populations and projected growth numbers dictate that a boundary divides a community or fails to perfectly conform to the concept of communities of interest. In these instances there is no other realistic option than to split these communities to observe the ultimate numerical criteria.

Rural and regional areas of Victoria have experienced lower than average projected and realised population growth. As such, an increase in the geographical size of a number of divisions such as Gippsland, Indi, Mallee, Murray and Wannon is necessary. The disparity in population growth rates between metropolitan Melbourne and these rural divisions, coupled with the necessity to maintain communities of interest between similar communities, means that the seat of Murray must be abolished and reconstituted in the outer northern suburbs of Melbourne. This reconstituted division would encompass the key outer-suburban growth corridor of Sunbury, Yuroke and Craigieburn. The divisions of Mallee, Indi, and McEwen, and to a lesser extent Bendigo, each accommodate the areas that were previously in the division of Murray. This redistribution better reflects the communities of interest in rural and regional Victoria, and ensures that each of these divisions is within the statutory population range.

The projected and realised population growth in the north-western suburbs of Melbourne is so considerable that it warrants the creation of a new Victorian federal division. A division encompassing Melton, Hopetoun Park and Bacchus Marsh is the most appropriate place for the new division as it captures the outer suburban growth corridor in the outer north-western suburbs of Melbourne. Including Bacchus Marsh in this outer suburban Melbourne seat reflects the inward-looking suburban focus of this area and the extended urban sprawl of metropolitan Melbourne.

The projected and realised population growth in metropolitan Melbourne necessitates the movement of boundaries to preserve communities of interest. An increase in high density housing in some areas of suburban Melbourne is one cause of this growth. One example of this is in the northern end of the current Flinders division. The large residential developments in Mount Martha have strong connections to Mornington and Bentons Square Shopping Centre. As such, to accommodate these areas of high population growth and to maintain the economic and social communities of interest within these areas, the boundary between Dunkley and Flinders should be realigned to Craigie Road.

Communities of interest that have been split by previous redistributions have been able to be reunited in this submission. Population growth and the increase to the enrolment quotas of each electorate have facilitated these changes. There are many examples across metropolitan Melbourne where boundaries have split suburbs that are clear economic and social communities of interest. Modest changes to boundaries which divided suburbs such as Surrey Hills, Mont Albert and Mont Albert North between the Kooyong and Chisholm divisions have realigned these suburbs and communities of interest within the Kooyong division. The artificial divide between the communities of interest in Mount Waverley and Glen Waverley created by the boundary between Chisholm and Bruce has been removed and these suburbs realigned in the

division of Chisholm. Similarly, boundaries dividing the suburbs of Narre Warren South, Narre Warren North, Lysterfield and Kalista have been realigned to maintain communities of interest contained within these suburbs. This has resulted in some realignment of the boundaries of the divisions of Aston, Casey, La Trobe, McMillan, Holt, Bruce and Flinders. In some areas of Victoria, the redrawing of boundaries is unnecessary. This is particularly the case in divisions where the communities of interest identified by the AEC during the last redistribution have not been significantly changed by factors such as population growth. This is reflected in divisions such as Melbourne Ports, Higgins and Goldstein, where the communities of interest that were correctly identified by the AEC during the last redistribution have experienced no significant population growth to warrant the changing of boundaries. Consistency of divisions and their boundaries is important in maintaining the historic character and nature of these divisions formed around distinct communities of interest. As such, these boundaries should remain unchanged.

Likewise, the alignment of the boundaries between Wannon, Corangamite and Corio are well constituted around communities of interest and should remain unchanged. To change Corangamite's western boundary with Wannon, or significantly alter its eastern boundary with Corio, would substantially change the nature and character of this division. The boundary between Corangamite and Wannon should remain unchanged along the natural dividing feature of Lake Corangamite and the LGA boundaries of Corangamite Shire and Colac Shire.

Despite the creation of a new division in the north-western metropolitan area of Melbourne, and the necessary reconstitution of a regional division to an outer metropolitan area, under the Liberal Party's submission, over 75% per cent of constituents remain in their current division. This adheres to the principle of consistency required by the Act.

Electors movements between divisions

ASTON

	Electors 2017	Electors 2019
Retains	96121	97600
Gains From		
LA TROBE	13284	13414
Total	109405	111014

BALLARAT

	Electors 2017	Electors 2019
Retains	99131	101333
Gains From		
CORANGAMITE	11373	11922
Loses To		
NEW	15234	15939
Total	110504	113255

BATMAN

	Electors 2017	Electors 2019
Retains	97147	99931
Gains From		
JAGAJAGA	7788	7934
Loses To		
JAGAJAGA	7572	7703
WILLS	6821	7035
Total	104935	107865

BENDIGO

	Electors 2017	Electors 2019
Retains	96700	99171
Gains From		
WANNON	10185	10175
Loses To		
MALLEE	42	43
MCEWEN	15311	15633
Total	106885	109346

BRUCE

	Electors 2017	Electors 2019
Retains	42006	43023
Gains From		
HOLT	29345	29595
HOTHAM	20827	21307
ISAACS	18754	19443
Loses To		
CHISHOLM	29092	29337
HOTHAM	24319	24769
Total	110932	113368

CALWELL

	Electors 2017	Electors 2019
Retains	24103	24484
Gains From		
MARIBYRNONG	5762	5958
SCULLIN	37630	38225
WILLS	37624	38805
Loses To		
GORTON	34158	34412
MURRAY	53425	56575
Total	105119	107472

CASEY

	Electors 2017	Electors 2019
Retains	98418	100684
Gains From		
INDI	12051	12159
Loses To		
LA TROBE	6869	6941
Total	110469	112843

CHISHOLM

	Electors 2017	Electors 2019
Retains	70951	72703
Gains From		
BRUCE	29092	29337
DEAKIN	9618	9948
Loses To		
HOTHAM	17359	17957
KOoyong	9501	9673
Total	109661	111988

CORANGAMITE

	Electors 2017	Electors 2019
Retains	103483	107779
Loses To		
BALLARAT	11373	11922
CORIO	129	127
Total	103483	107779

CORIO

	Electors 2017	Electors 2019
Retains	111252	113798
Gains From		
CORANGAMITE	129	127
Total	111381	113925

DEAKIN

	Electors 2017	Electors 2019
Retains	90521	92519
Gains From		
MENZIES	16125	16256
Loses To		
CHISHOLM	9618	9948
Total	106646	108775

DUNKLEY

	Electors 2017	Electors 2019
Retains	98906	100550
Gains From		
FLINDERS	10993	11544
Loses To		
ISAACS	8104	8223
Total	109899	112094

FLINDERS

	Electors 2017	Electors 2019
Retains	108420	111290
Loses To		
DUNKLEY	10993	11544
Total	108420	111290

GELLIBRAND

	Electors 2017	Electors 2019
Retains	69152	71076
Gains From		
GORTON	6621	7179
LALOR	27716	30881
Loses To		
GORTON	7968	8236
MARIBYRNONG	34125	35548
Total	103489	109136

GIPPSLAND

	Electors 2017	Electors 2019
Retains	105907	106760
Total	105907	106760

GOLDSTEIN

	Electors 2017	Electors 2019
Retains	106548	108916
Total	106548	108916

GORTON

	Electors 2017	Electors 2019
Retains	30247	30895
Gains From		
CALWELL	34158	34412
GELLIBRAND	7968	8236
MARIBYRNONG	32304	33157
Loses To		
GELLIBRAND	6621	7179
NEW	84514	90631
Total	104677	106700

HIGGINS

	Electors 2017	Electors 2019
Retains	106308	109539
Total	106308	109539

HOLT

	Electors 2017	Electors 2019
Retains	85393	94329
Gains From		
LA TROBE	18682	19402
Loses To		
BRUCE	29345	29595
LA TROBE	6973	7159
Total	104075	113731

HOTHAM

	Electors 2017	Electors 2019
Retains	69268	70867
Gains From		
BRUCE	24319	24769
CHISHOLM	17359	17957
Loses To		
BRUCE	20827	21307
ISAACS	10485	10571
Total	110946	113593

INDI

	Electors 2017	Electors 2019
Retains	88347	89784
Gains From		
BRUCE	24319	24769
Loses To		
CASEY	12051	12159
MCEWEN	5425	5567
Total	108954	110532

ISAACS

	Electors 2017	Electors 2019
Retains	88954	92539
Gains From		
DUNKLEY	8104	8223
HOTHAM	10485	10571
Loses To		
BRUCE	18754	19443
Total	107543	111333

JAGAJAGA

	Electors 2017	Electors 2019
Retains	72594	73469
Gains From		
BATMAN	7572	7703
MCEWEN	12	12
SCULLIN	26866	27331
Loses To		
BATMAN	7788	7934
MENZIES	23825	24178
Total	107044	108515

KOONYONG

	Electors 2017	Electors 2019
Retains	100726	102804
Gains From		
CHISHOLM	9501	9673
Total	110227	112477

LALOR

	Electors 2017	Electors 2019
Retains	103342	110318
Loses To		
GELLIBRAND	27716	30881
Total	103342	110318

LA TROBE

	Electors 2017	Electors 2019
Retains	79069	83771
Gains From		
CASEY	6869	6941
HOLT	6973	7159
MCMILLAN	9966	11232
Loses To		
ASTON	13284	13414
HOLT	18682	19402
Total	102877	109103

MALLEE

	Electors 2017	Electors 2019
Retains	76115	76094
Gains From		
BENDIGO	42	43
MURRAY	33292	33402
Loses To		
WANNON	23816	23780
Total	109449	109539

MARIBYRNONG

	Electors 2017	Electors 2019
Retains	74972	77482
Gains From		
GELLIBRAND	34125	35548
Loses To		
CALWELL	5762	5958
GORTON	32304	33157
Total	109097	113030

MCEWEN

	Electors 2017	Electors 2019
Retains	37595	38961
Gains From		
BENDIGO	15311	15633
INDI	5425	5567
MURRAY	51744	52518
Loses To		
JAGAJAGA	12	12
MURRAY	48821	52691
SCULLIN	53724	59480
Total	110075	112679

MCMILLAN

	Electors 2017	Electors 2019
Retains	110914	114229
Loses To		
LA TROBE	9966	11232
Total	110914	114229

MELBOURNE

	Electors 2017	Electors 2019
Retains	101511	107608
Loses To		
WILLS	16031	16539
Total	101511	107608

MELBOURNE PORTS

	Electors 2017	Electors 2019
Retains	105094	108469
Total	105094	108469

MENZIES

	Electors 2017	Electors 2019
Retains	82732	84180
Gains From		
JAGAJAGA	23825	24178
Loses To		
DEAKIN	16125	16256
Total	106557	108358

MURRAY

	Electors 2017	Electors 2019
Retains	0	0
Gains From		
CALWELL	53425	56575
MCEWEN	48821	52691
Loses To		
INDI	20607	20748
MALLEE	33292	33402
MCEWEN	51744	52518
Total	102246	109266

NEW

	Electors 2017	Electors 2019
Retains	0	0
Gains From		
BALLARAT	15234	15939
GORTON	84514	90631
Total	99748	106570

SCULLIN

	Electors 2017	Electors 2019
Retains	49127	52572
Gains From		
MCEWEN	53724	59480
Loses To		
CALWELL	37630	38225
JAGAJAGA	26866	27331
Total	102851	112052

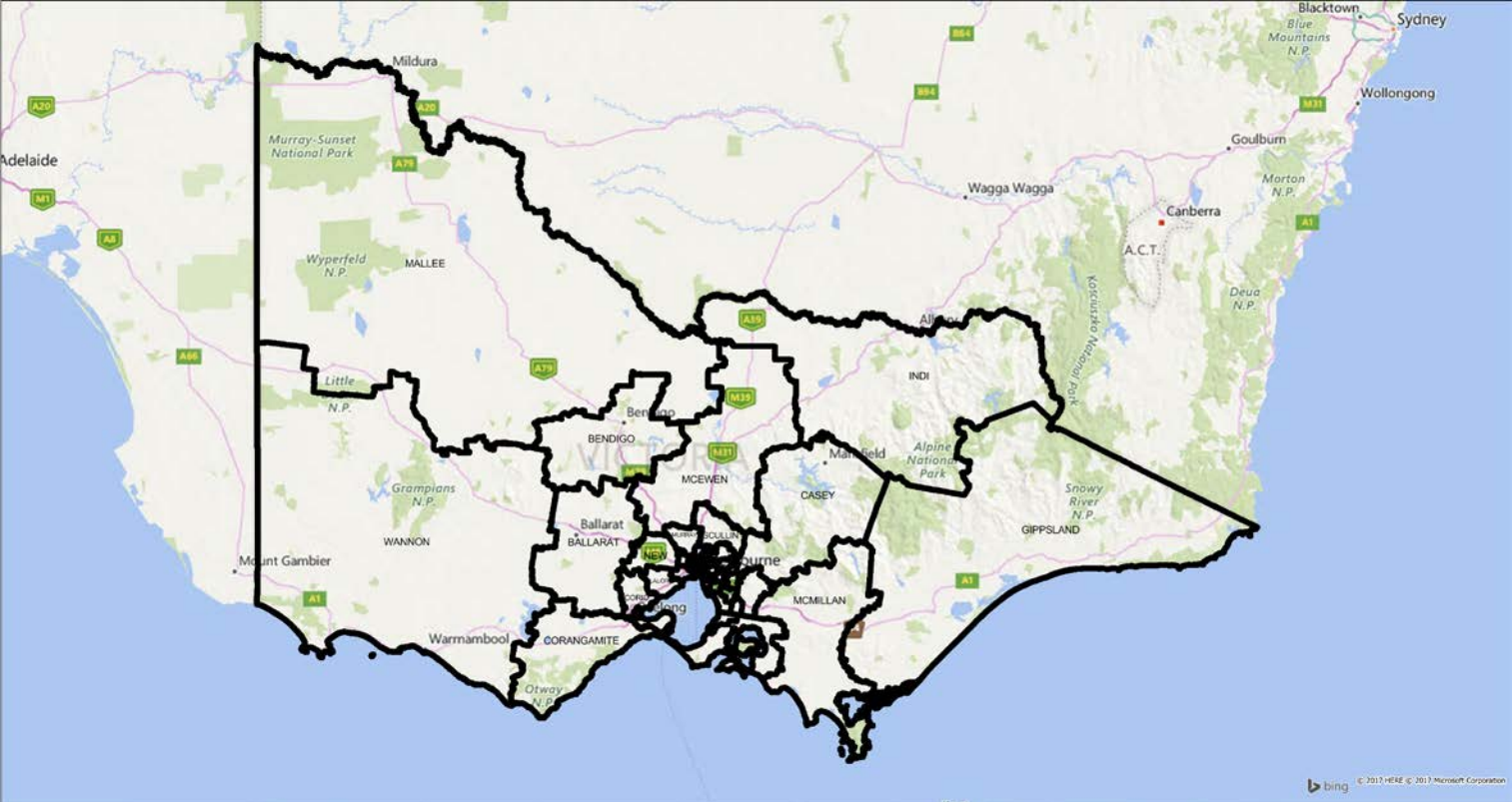
WANNON

	Electors 2017	Electors 2019
Retains	89682	89887
Gains From		
MALLEE	23816	23780
Loses To		
BENDIGO	10185	10175
Total	113498	113667

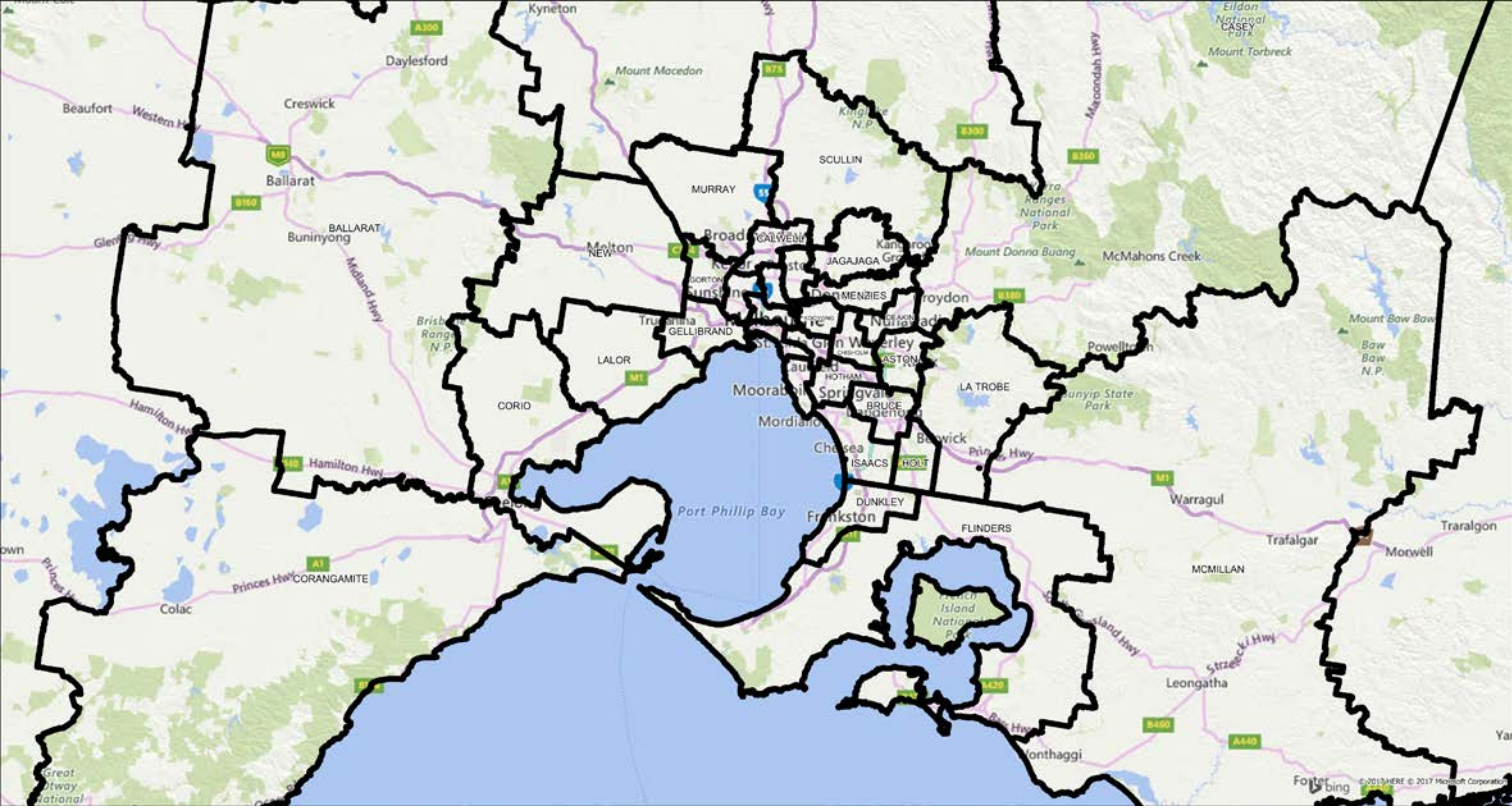
WILLS

	Electors 2017	Electors 2019
Retains	80690	83438
Gains From		
BATMAN	6821	7035
MELBOURNE	16031	16539
Loses To		
CALWELL	37624	38805
Total	103542	107012

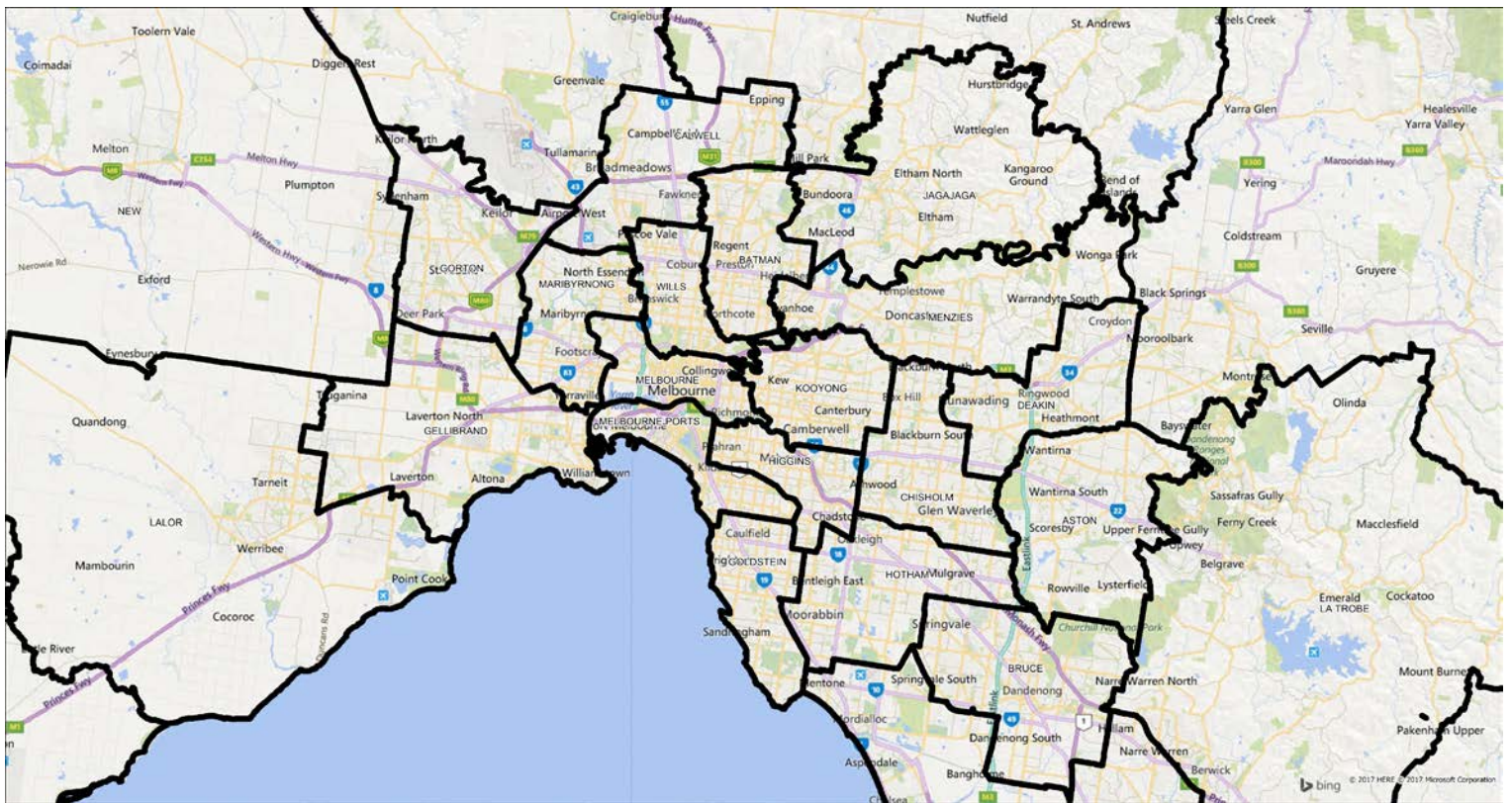
Statewide



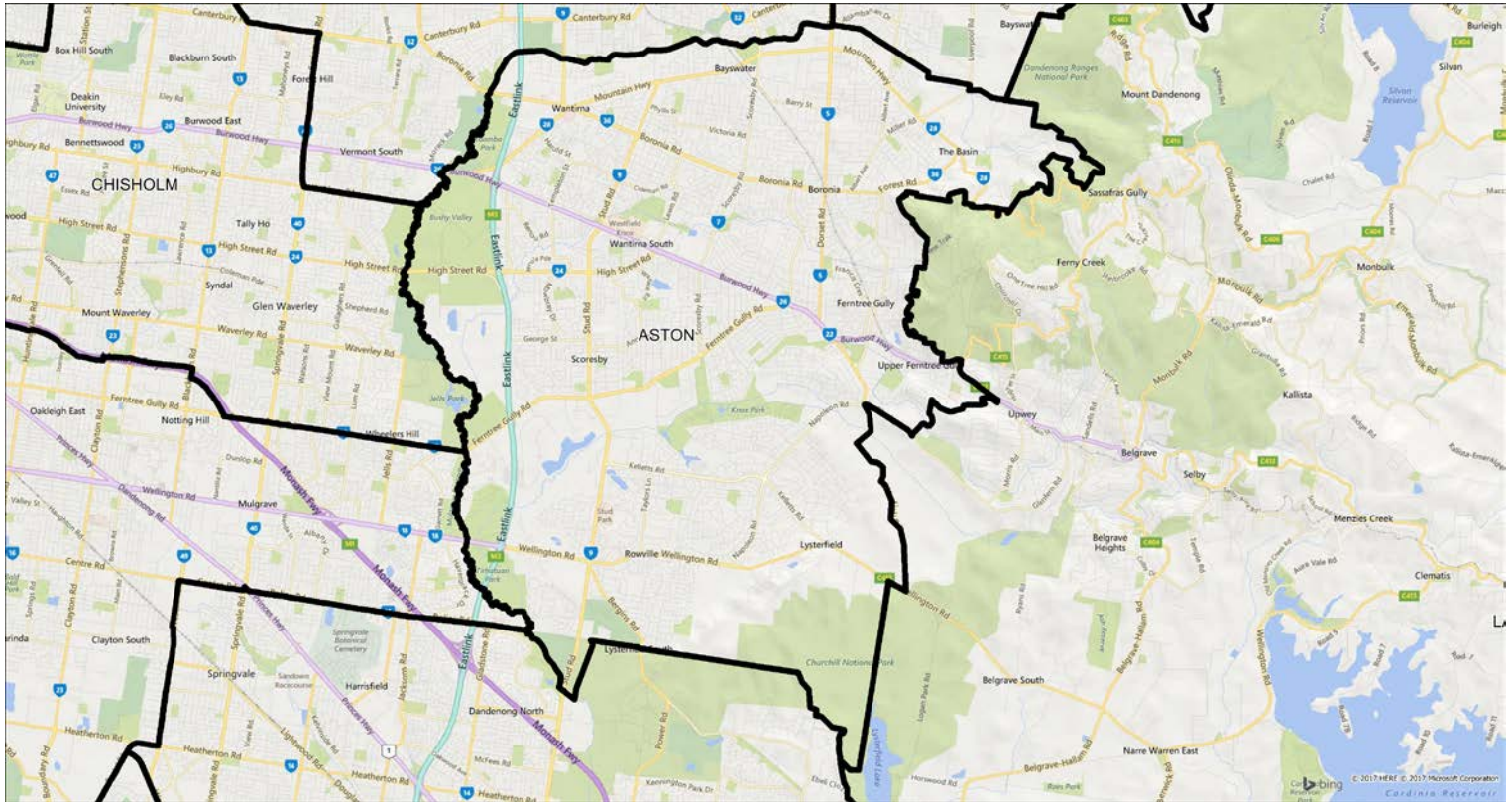
Outer Melbourne



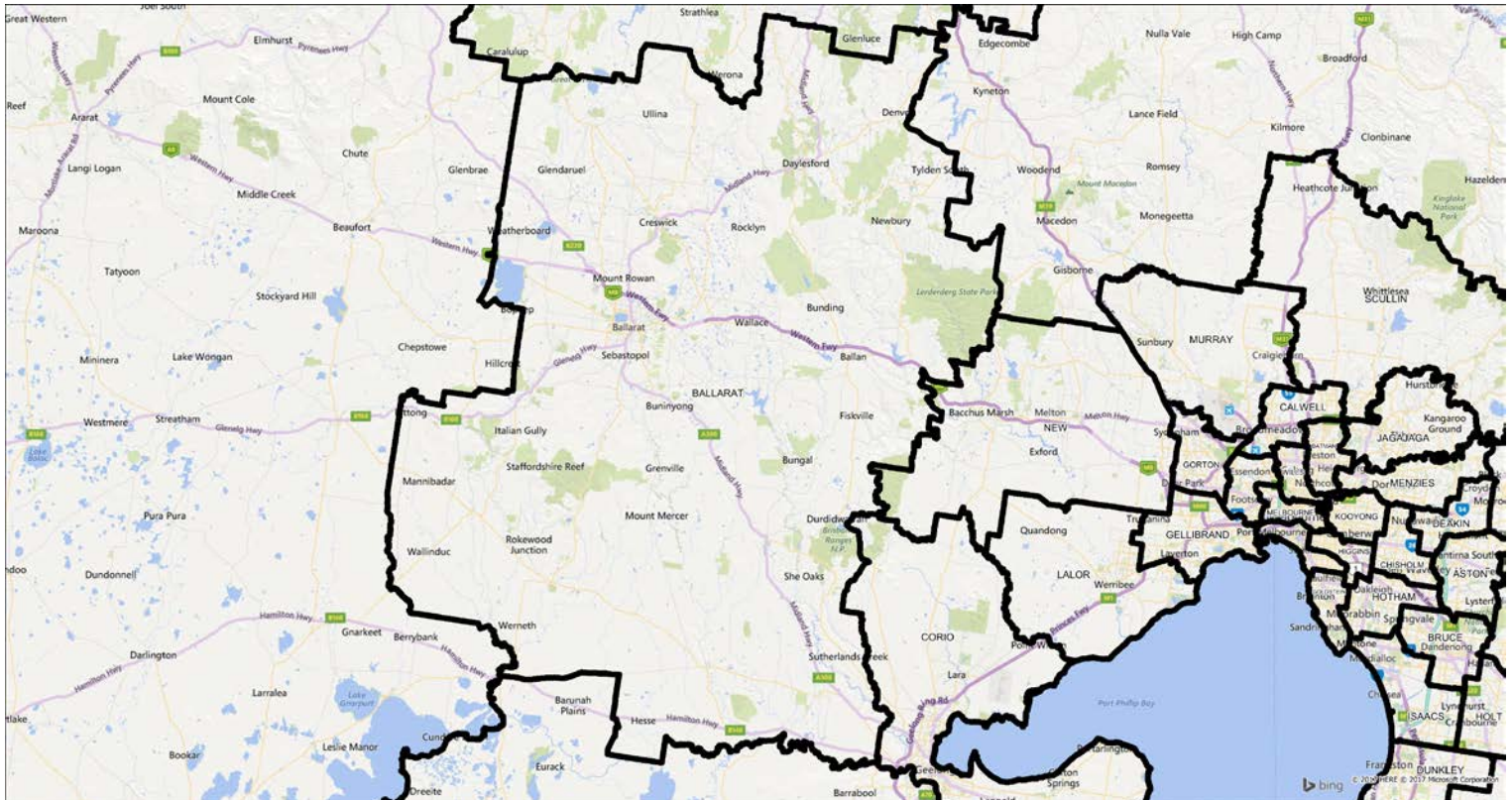
Metropolitan Melbourne



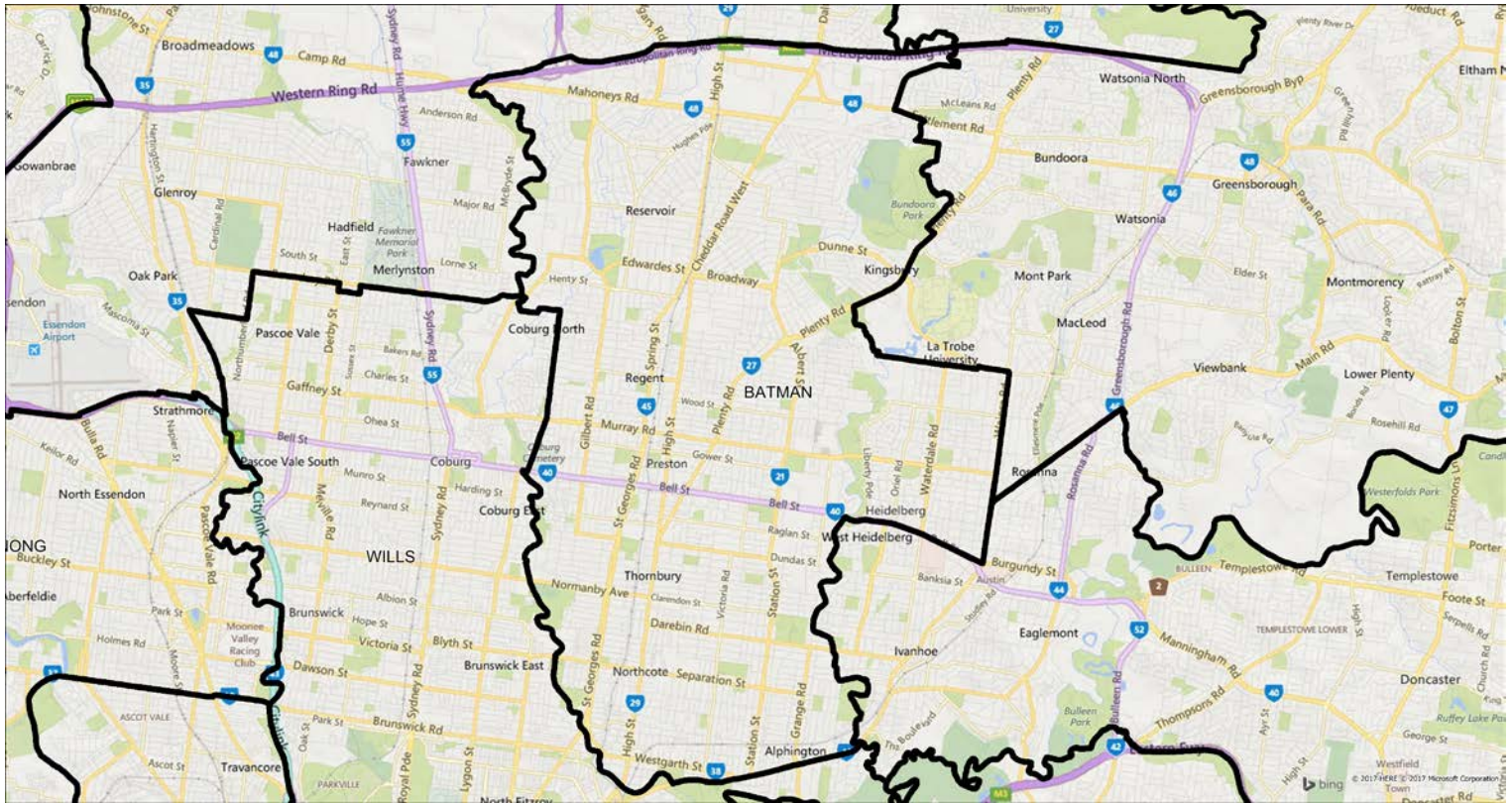
Aston



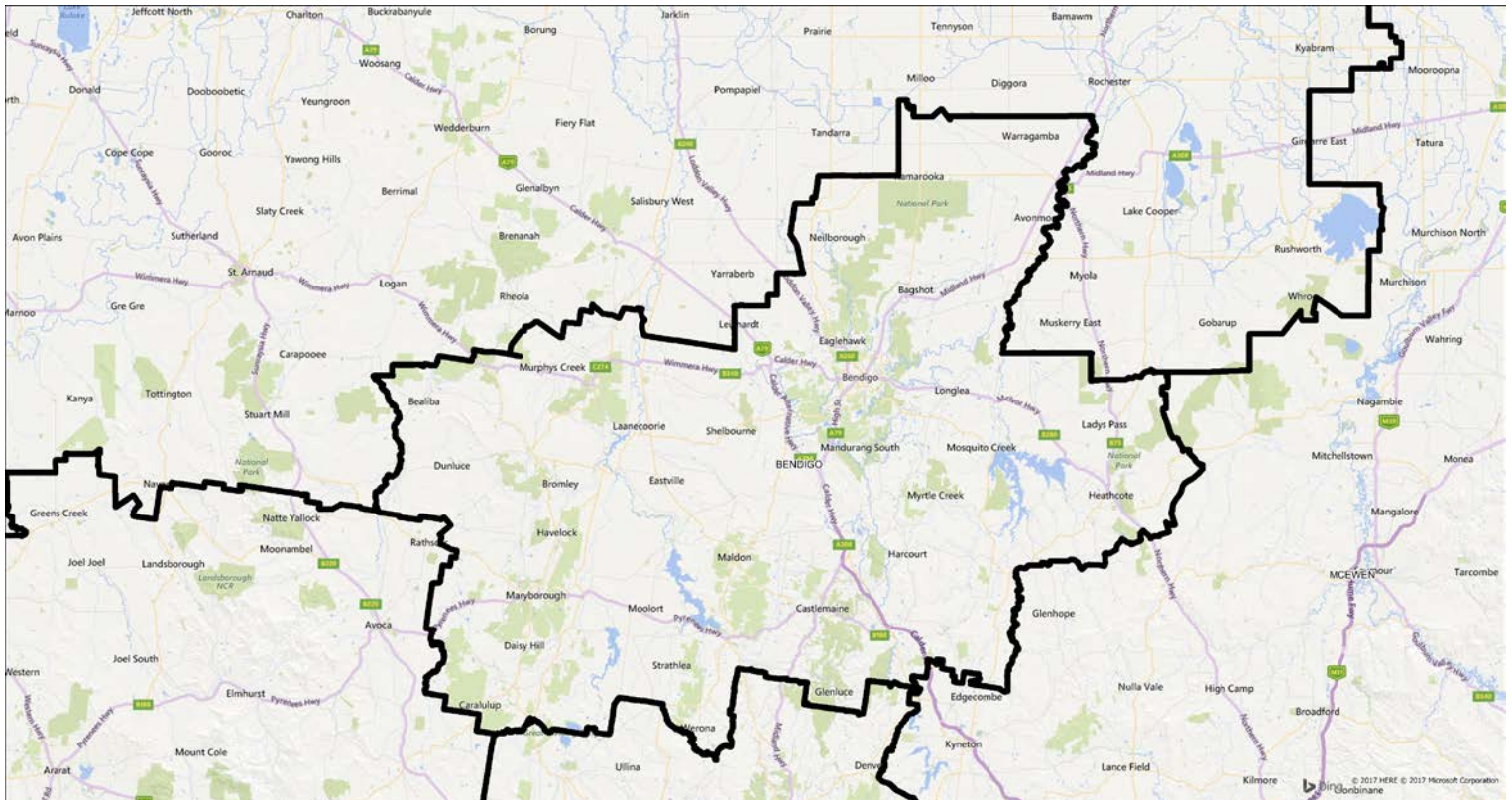
Ballarat



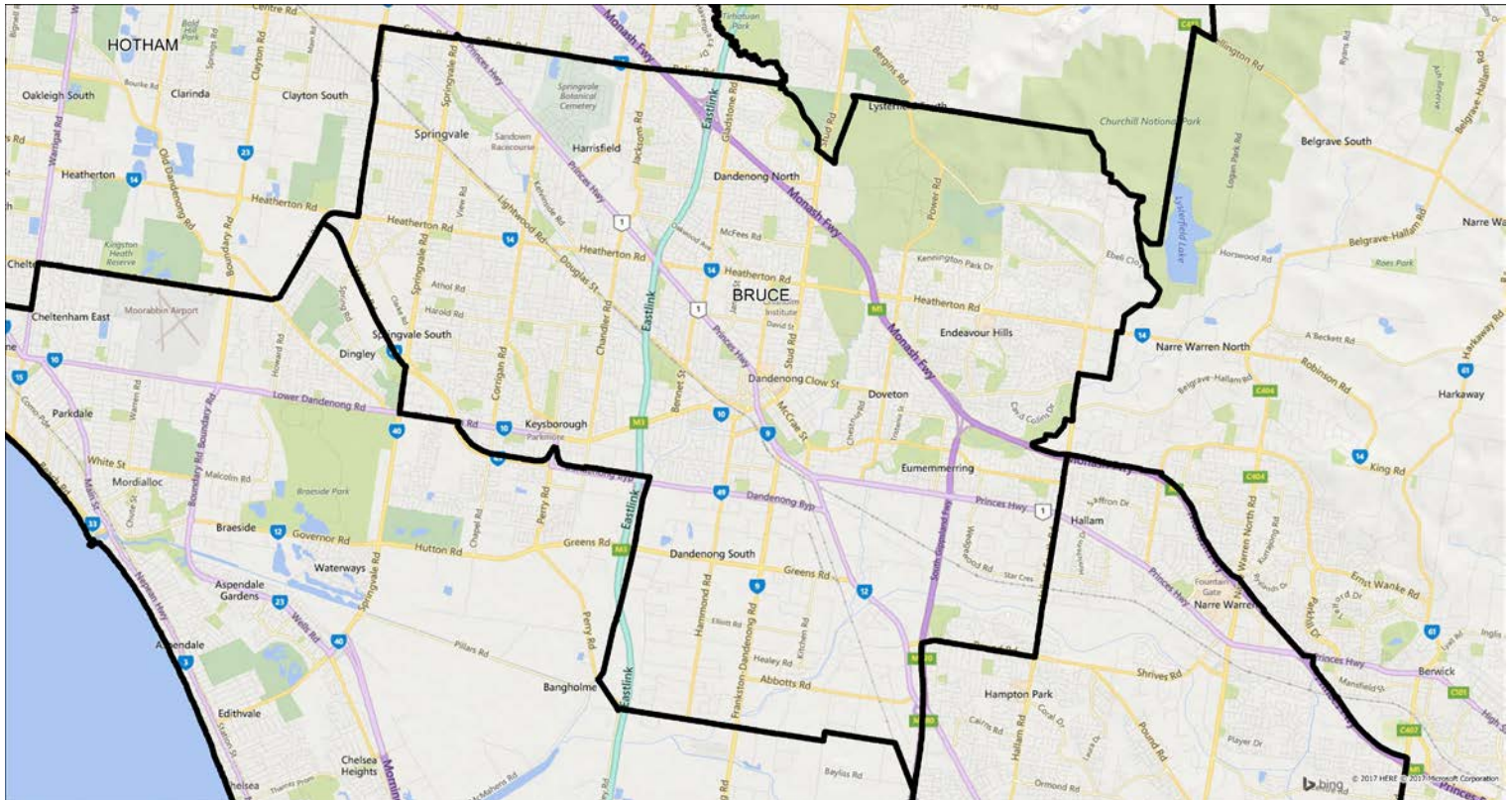
Batman



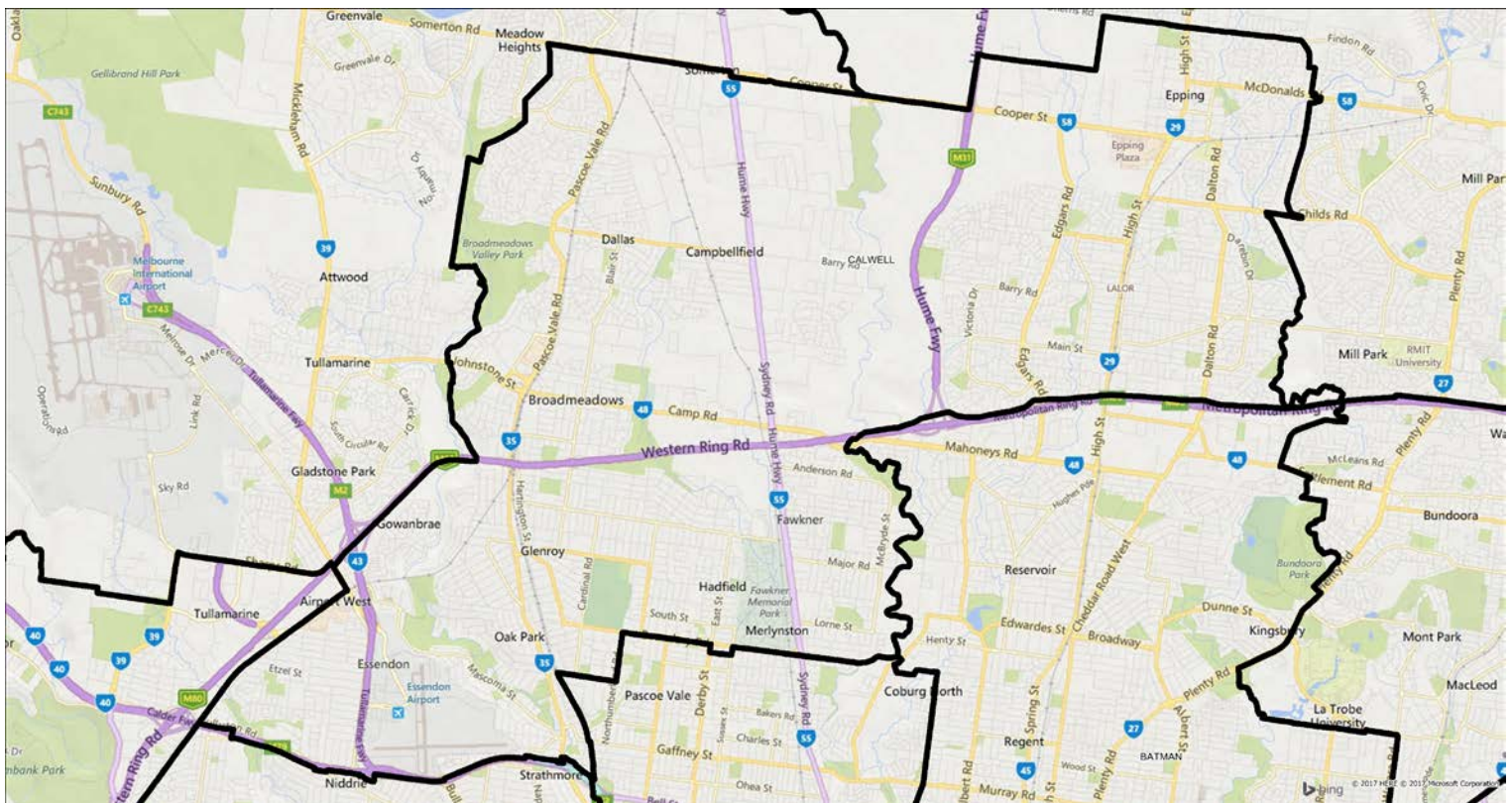
Bendigo



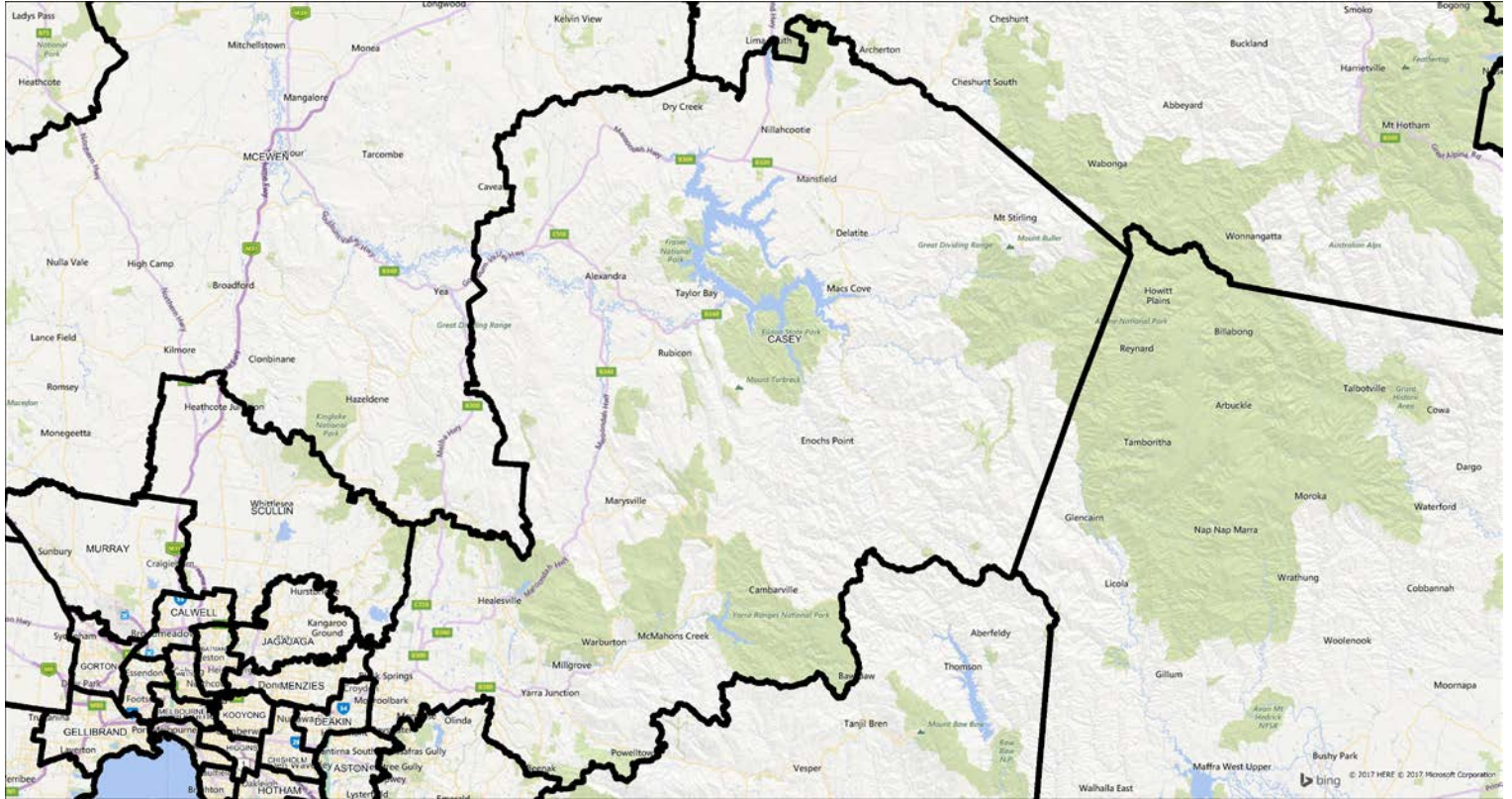
Bruce



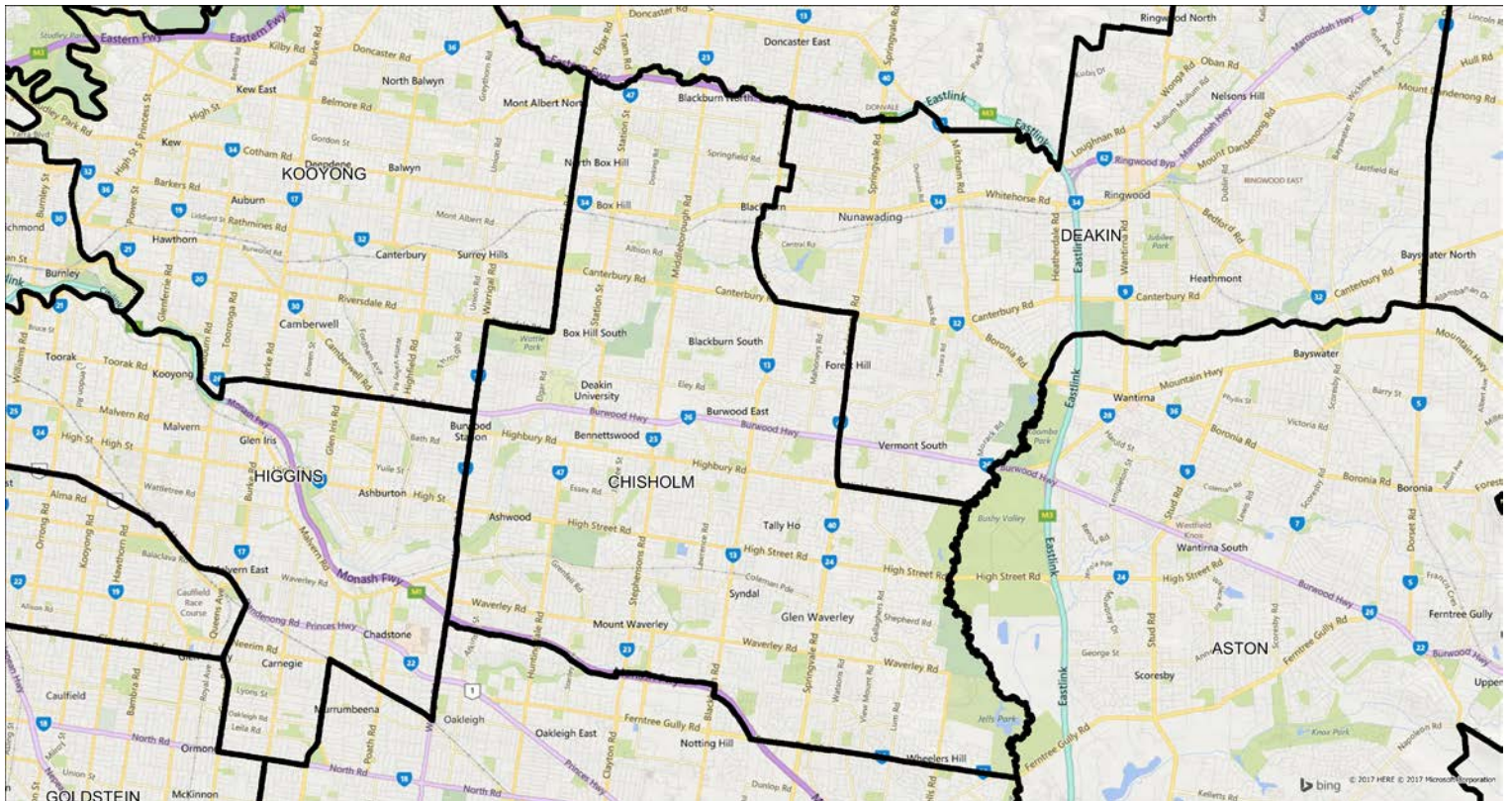
Calwell



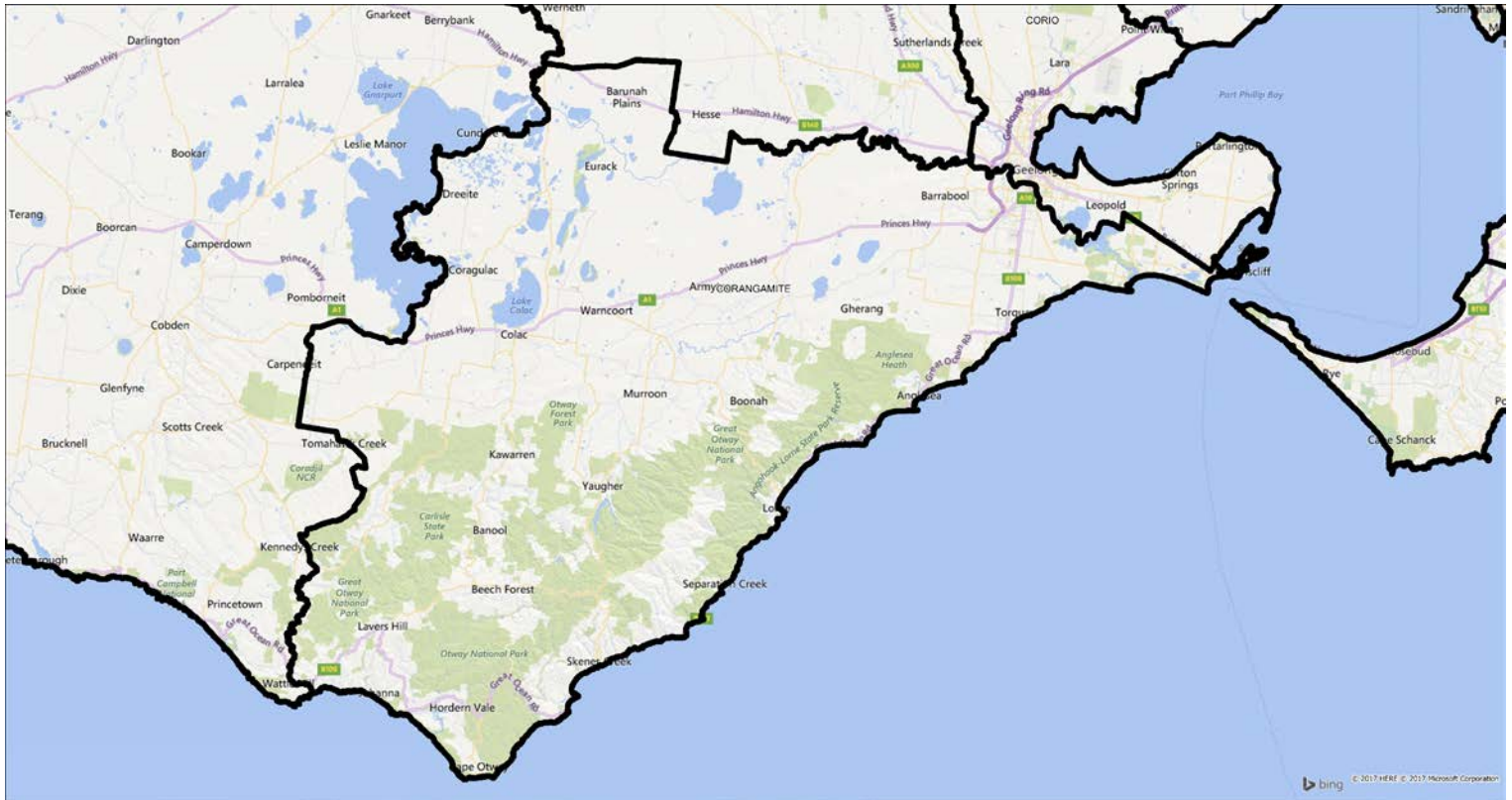
Casey



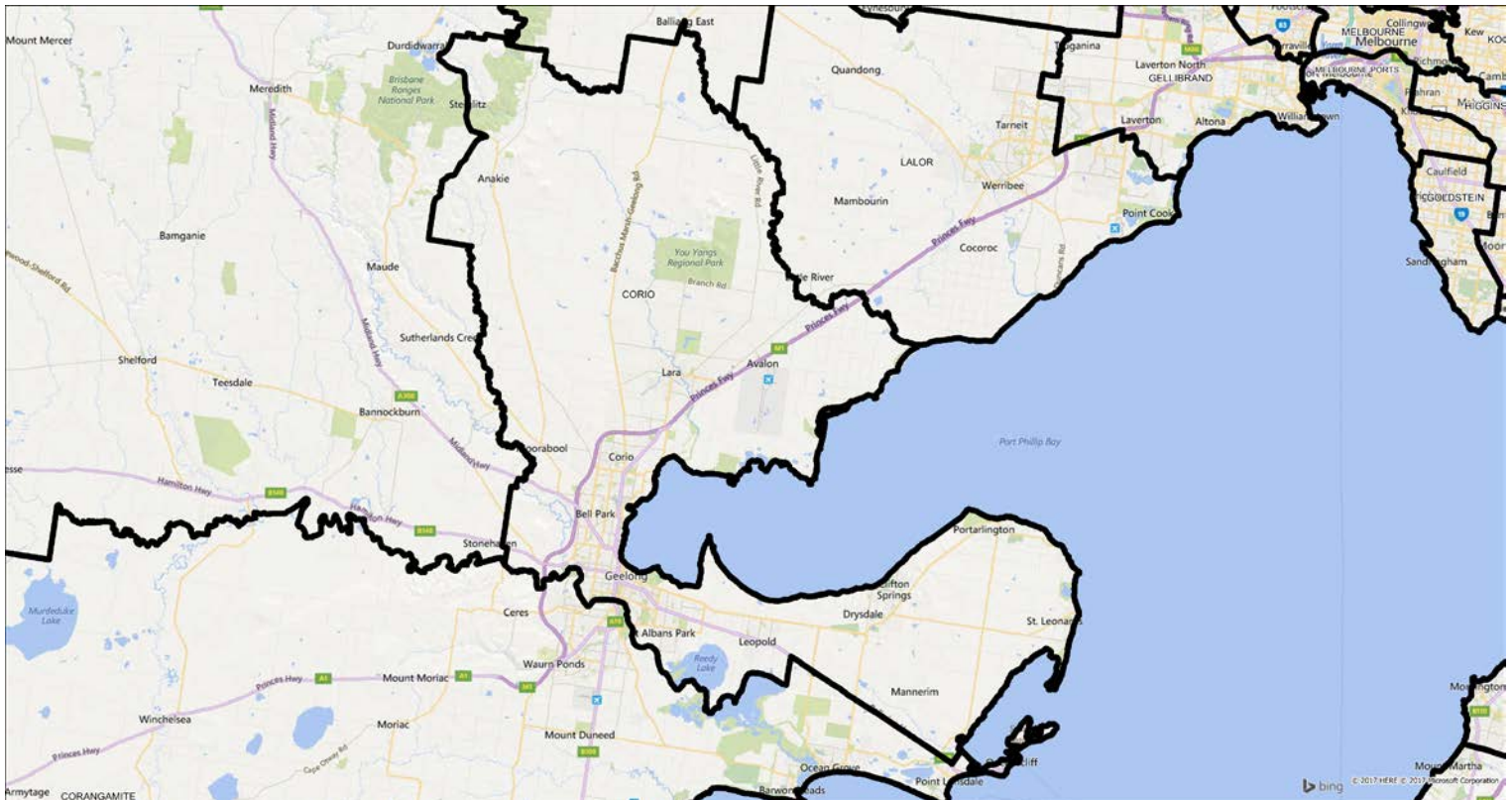
Chisholm



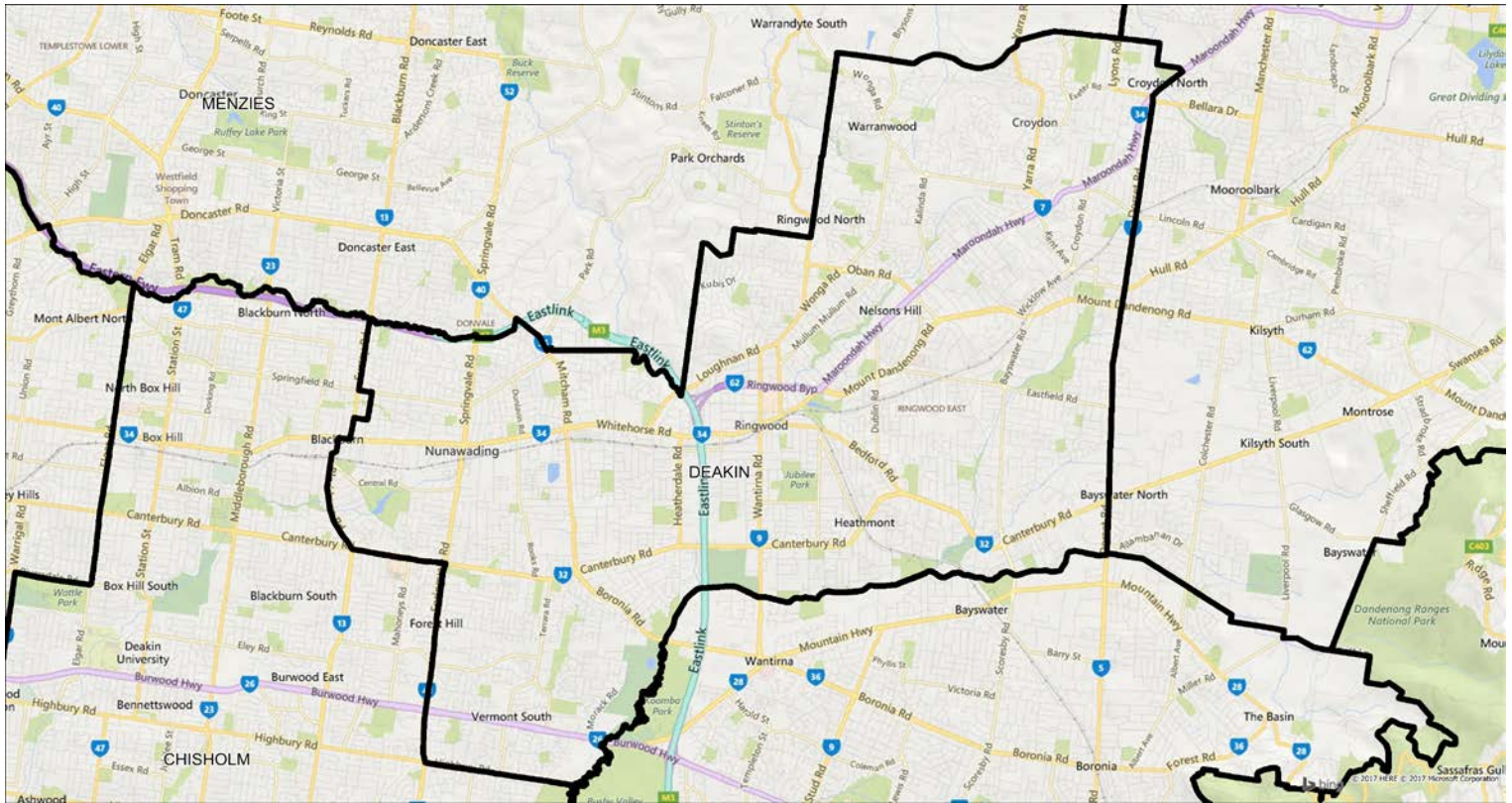
Corangamite



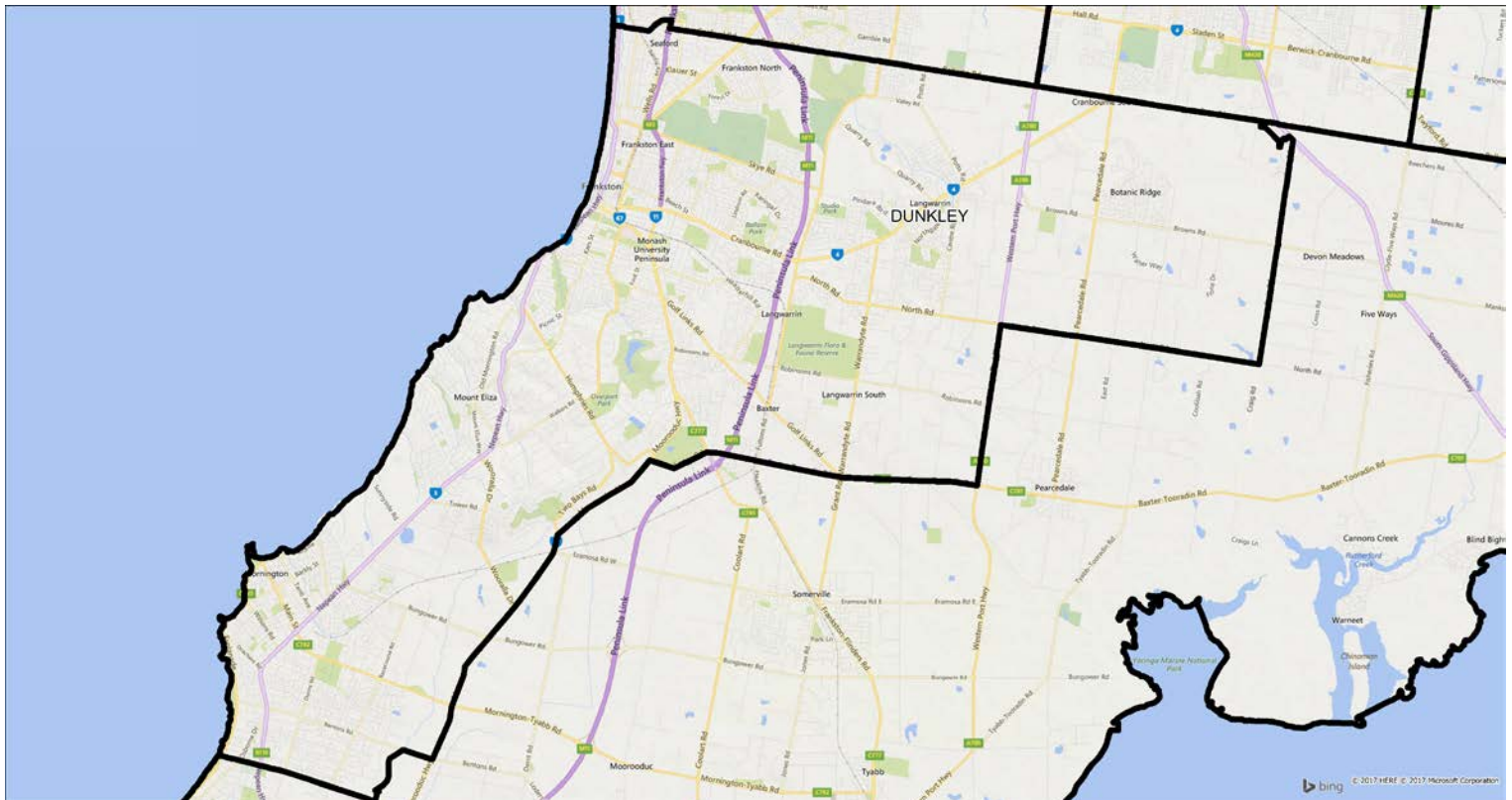
Corio



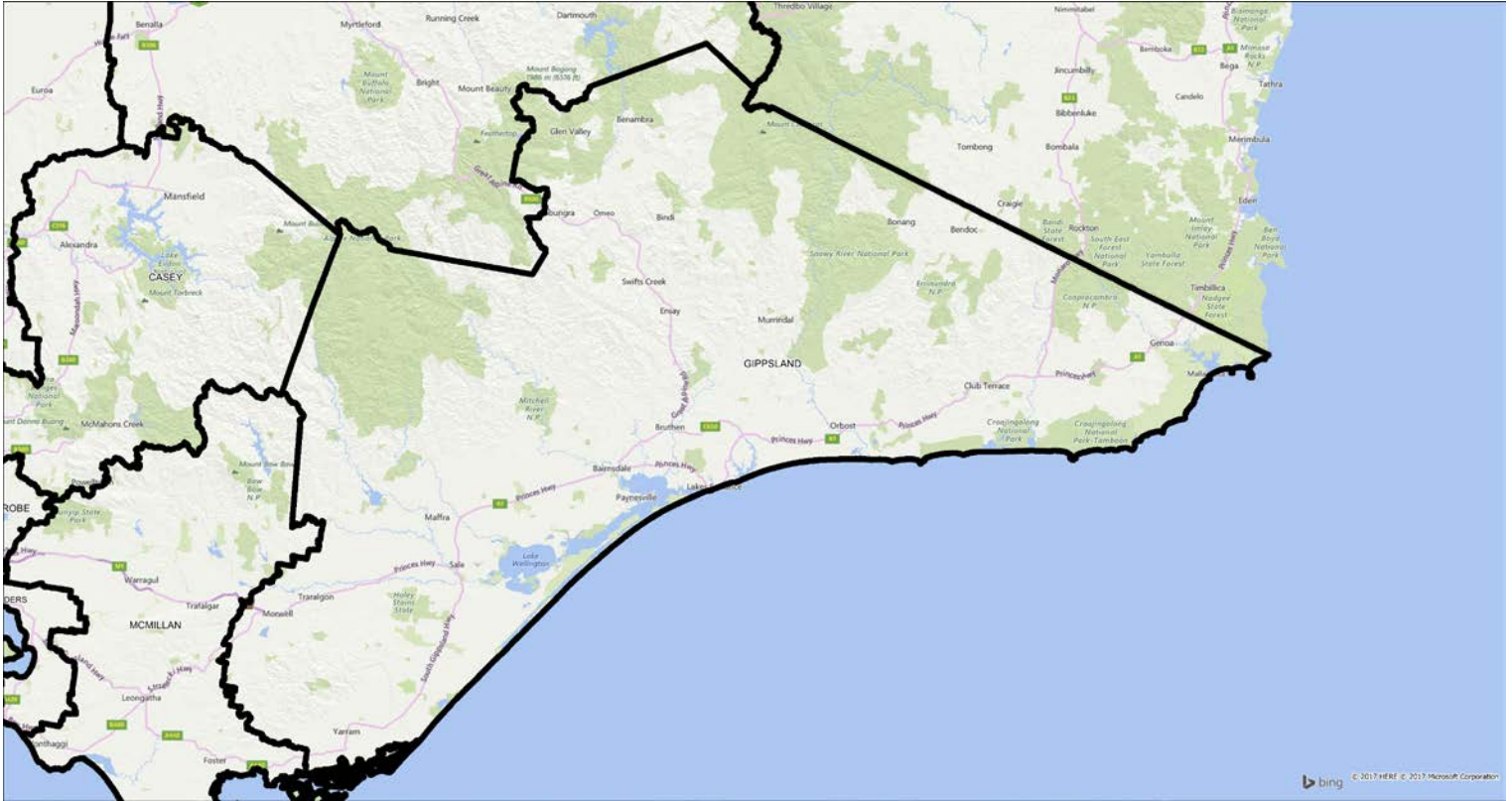
Deakin



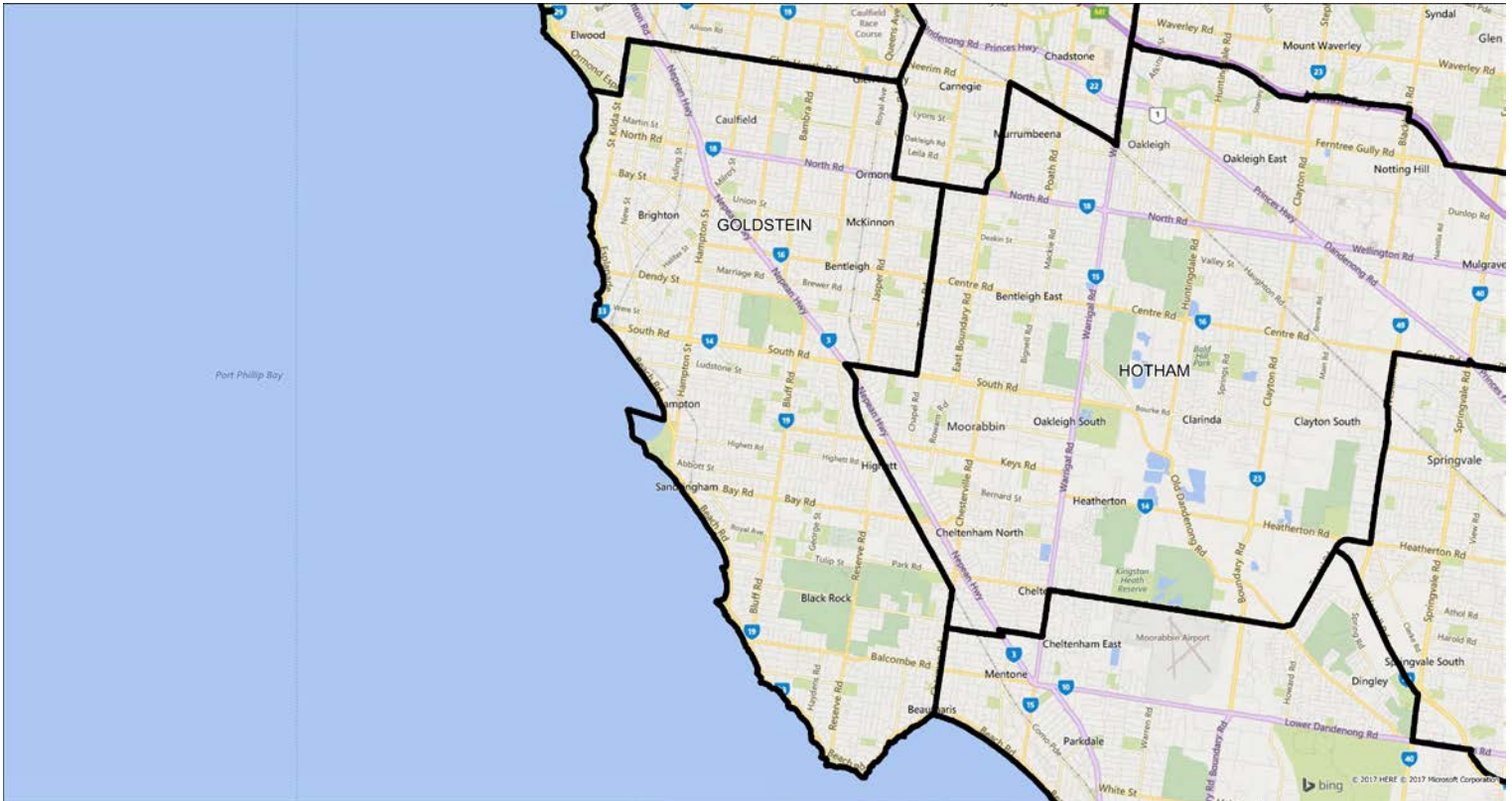
Dunkley



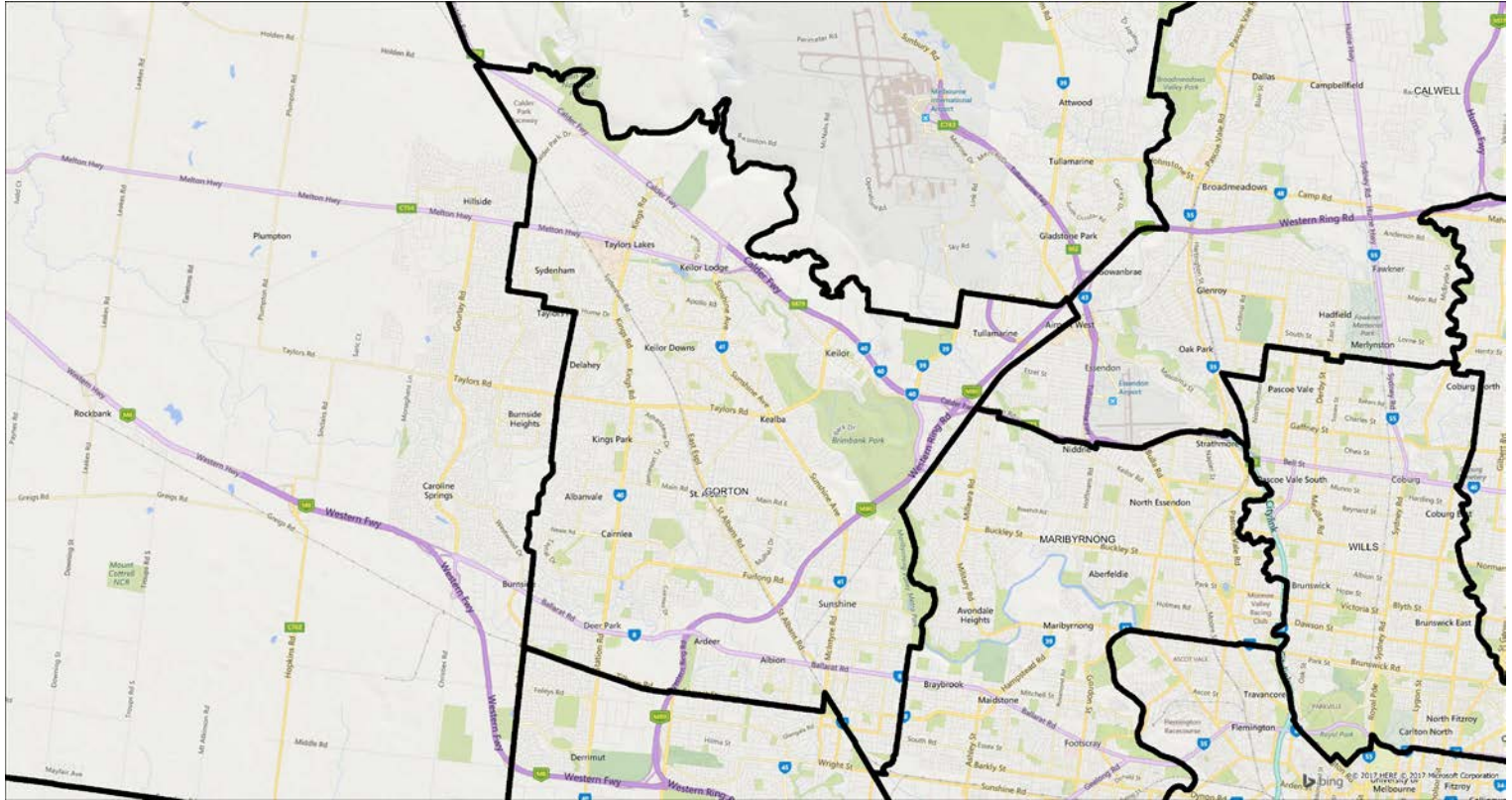
Gippsland



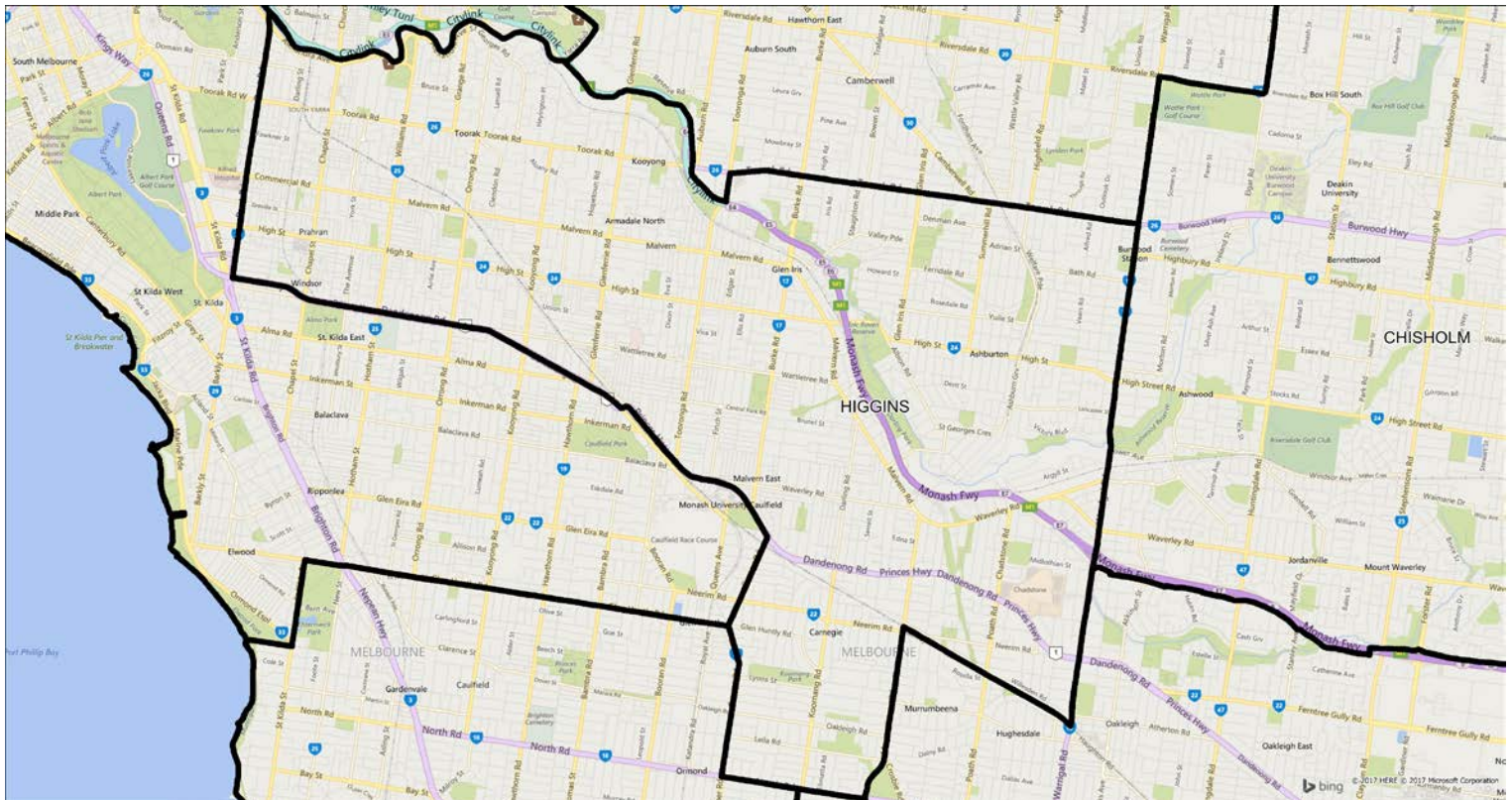
Goldstein



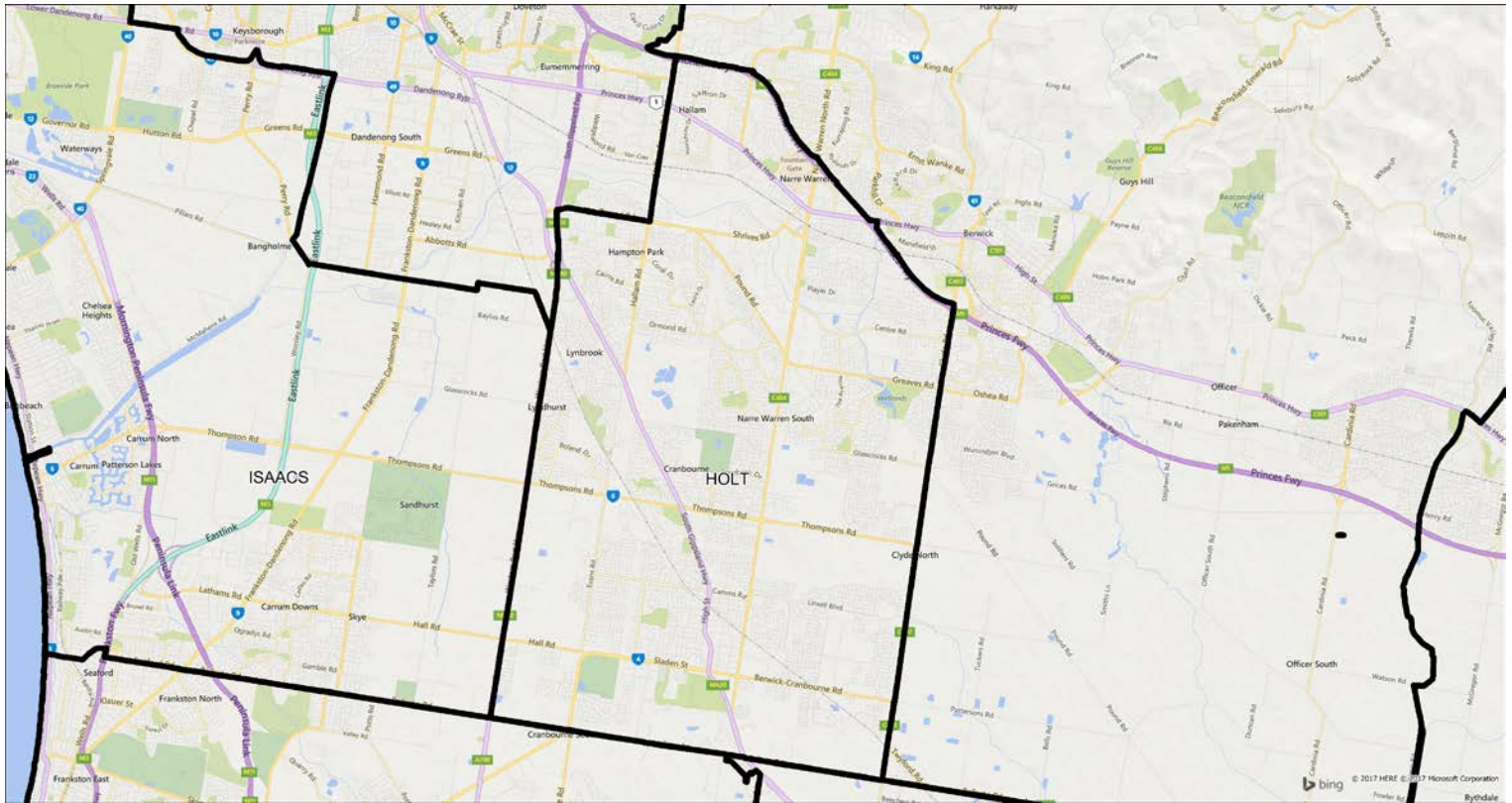
Gorton



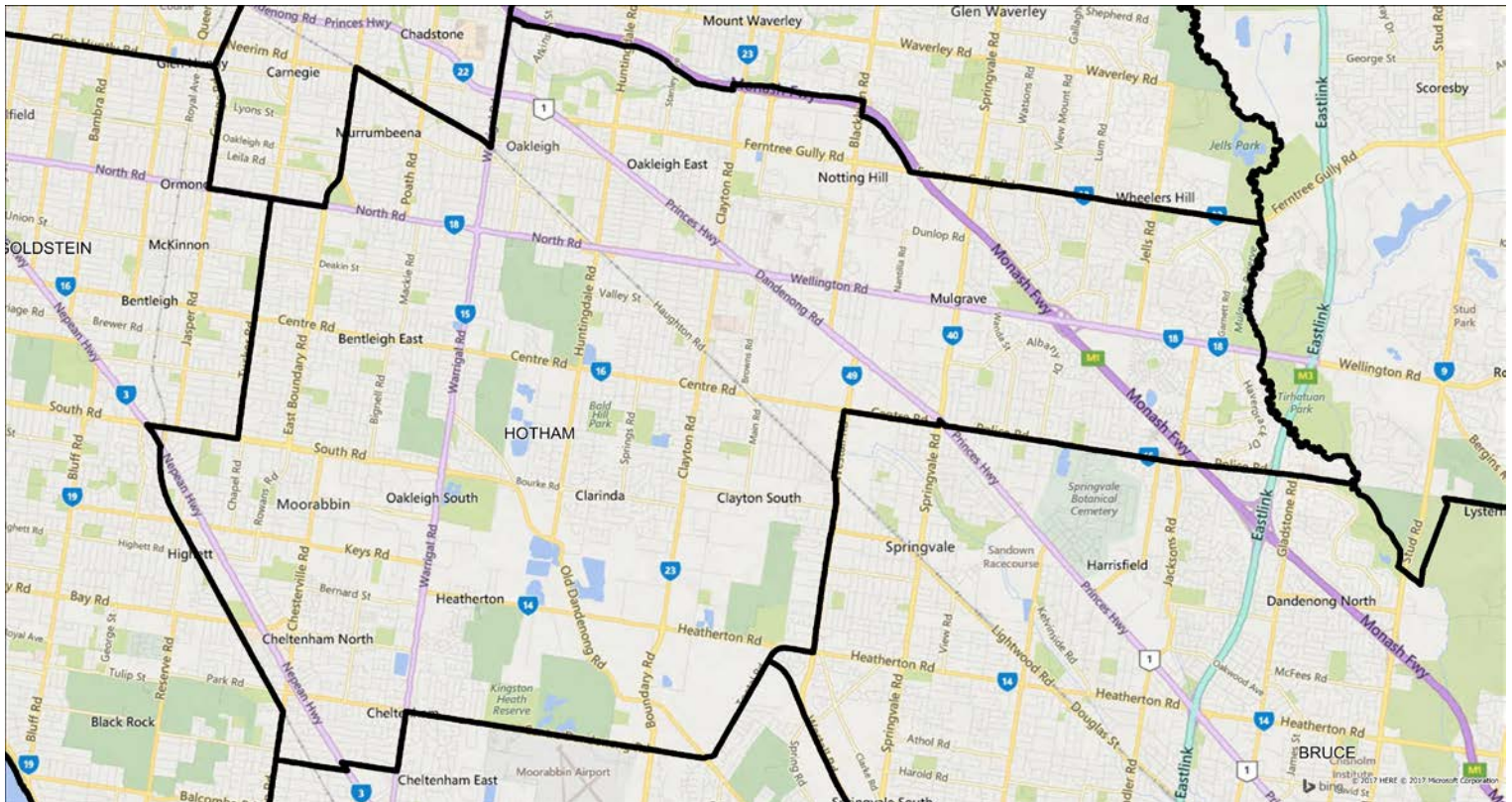
Higgins



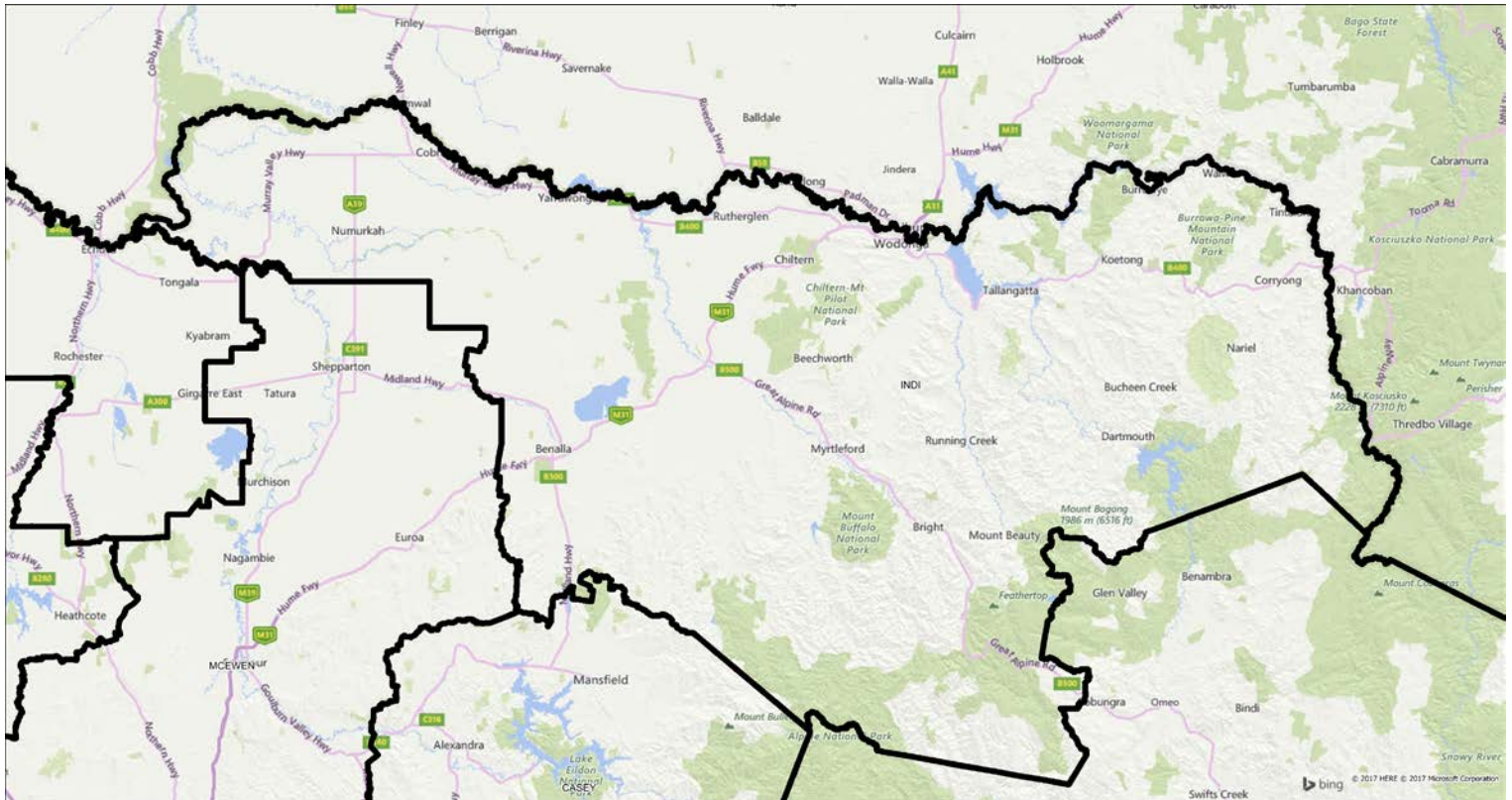
Holt



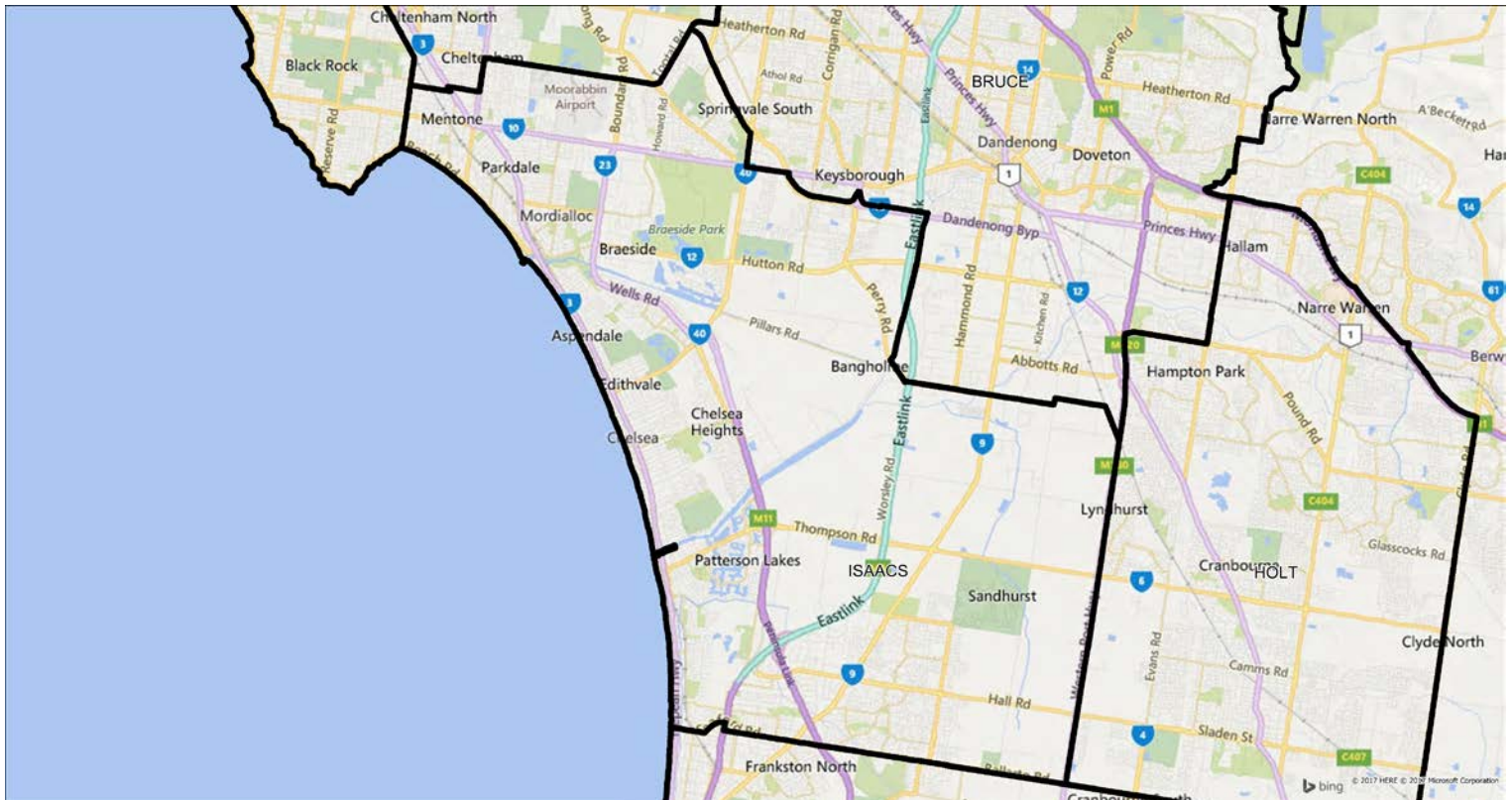
Hotham



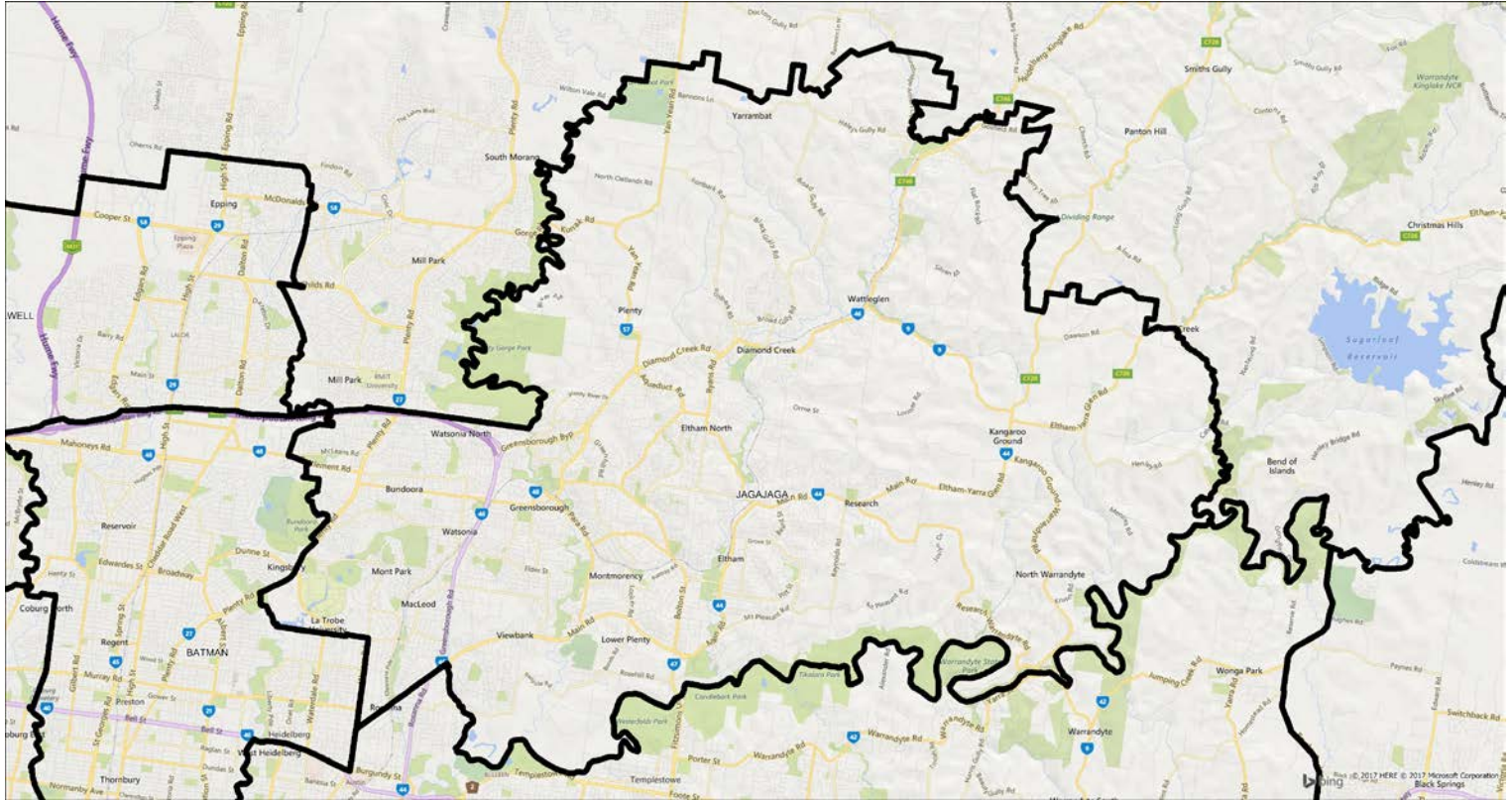
Indi



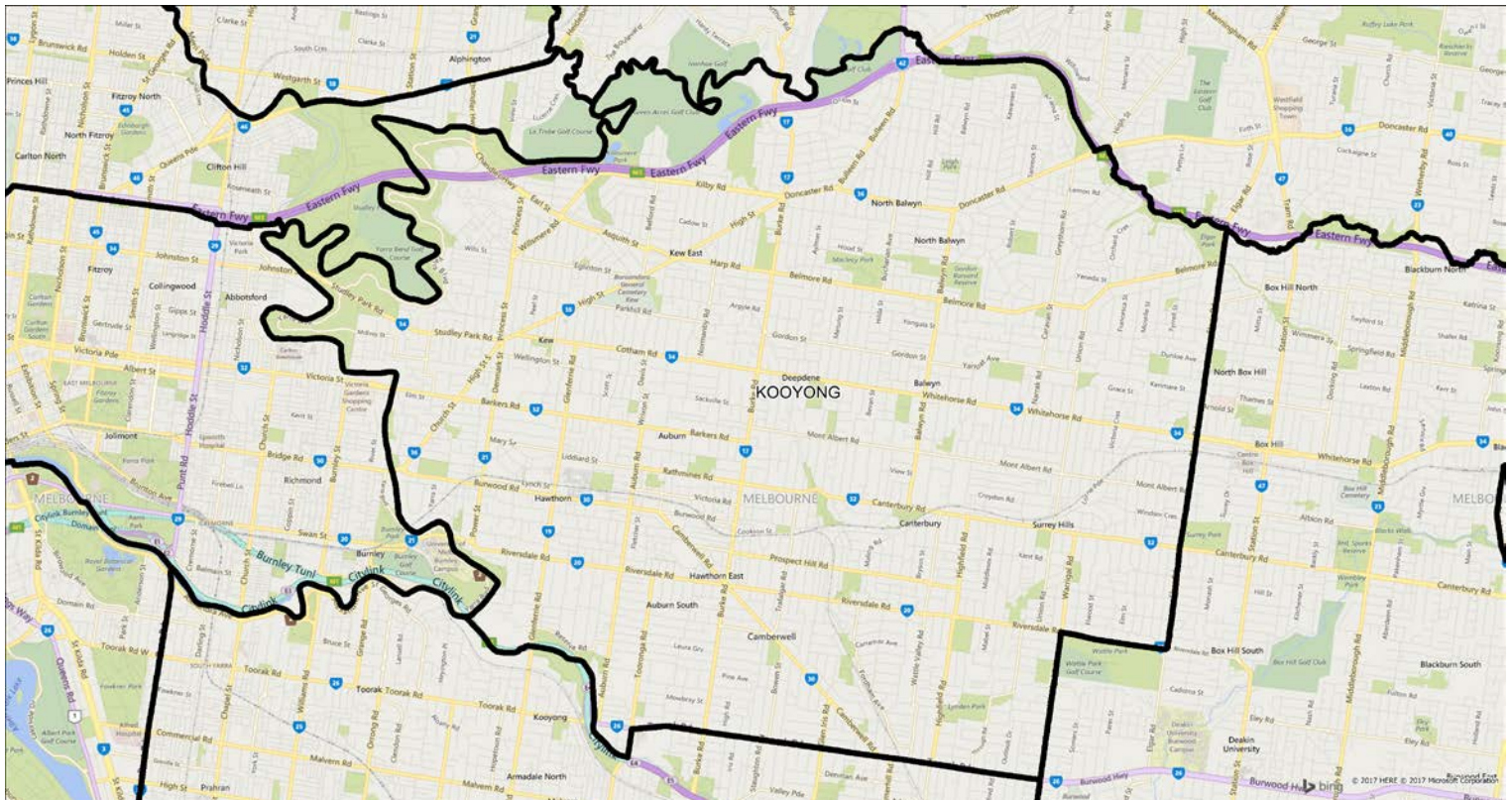
Isaacs



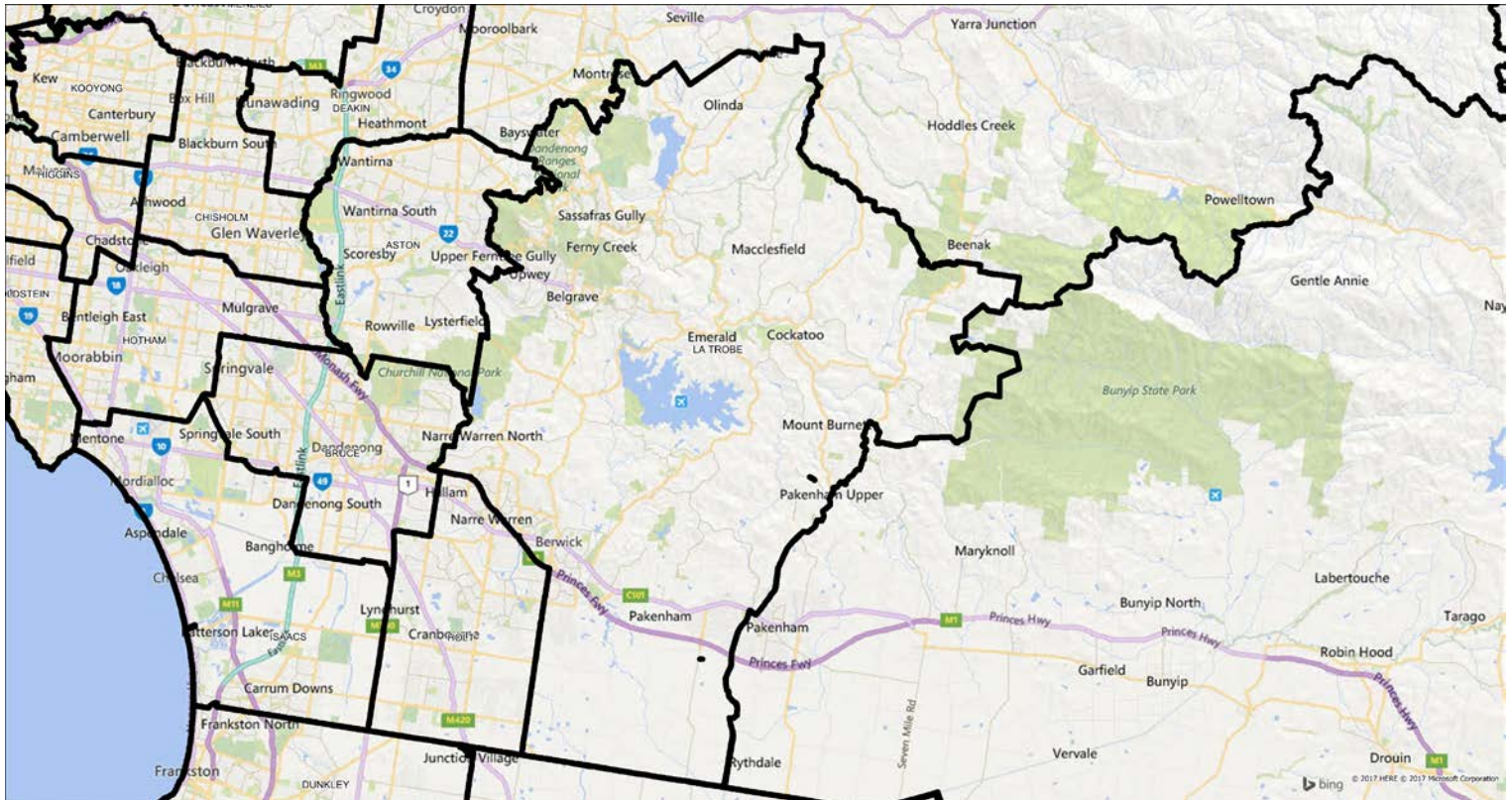
Jagajaga



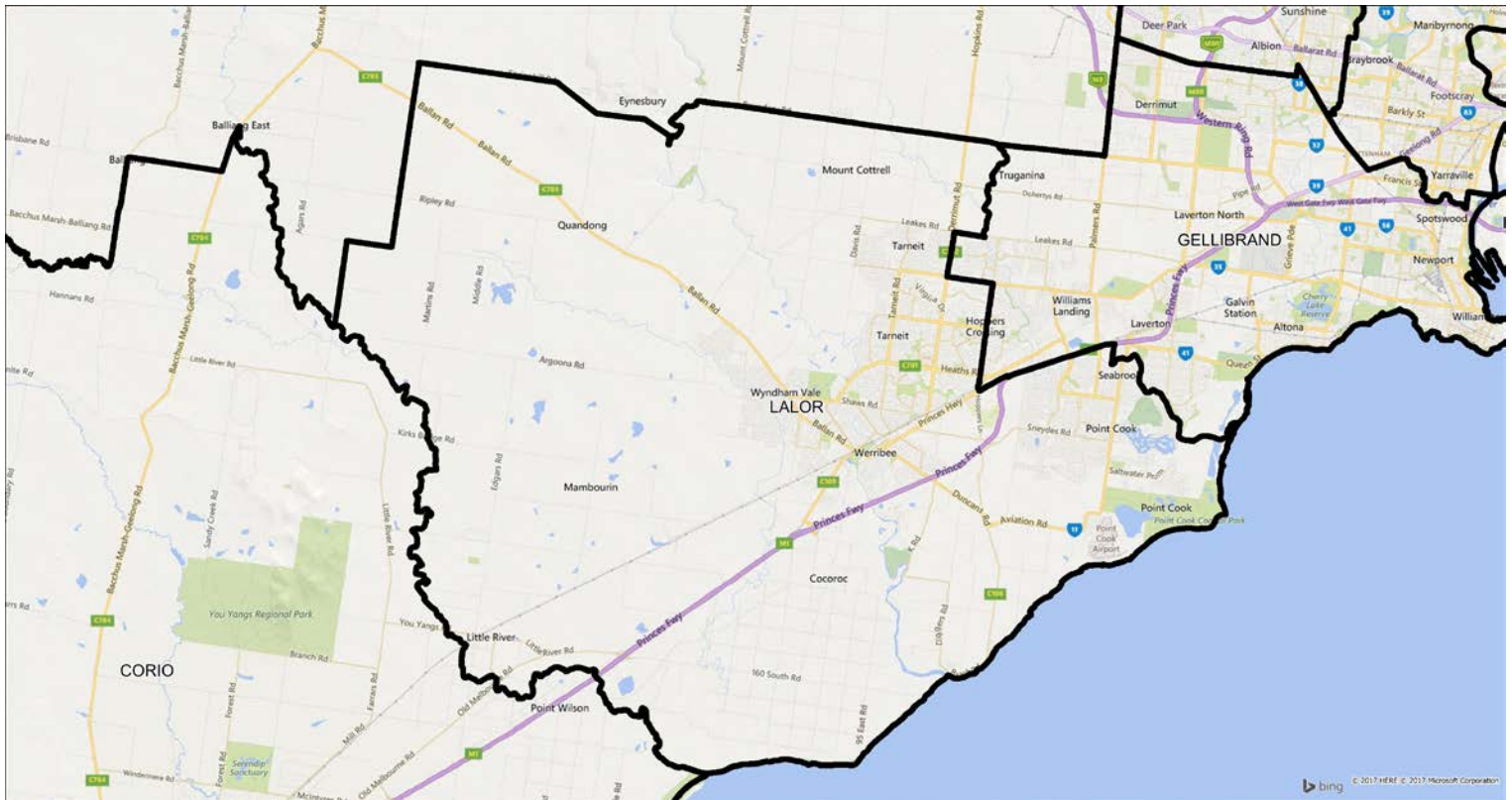
Kooyong



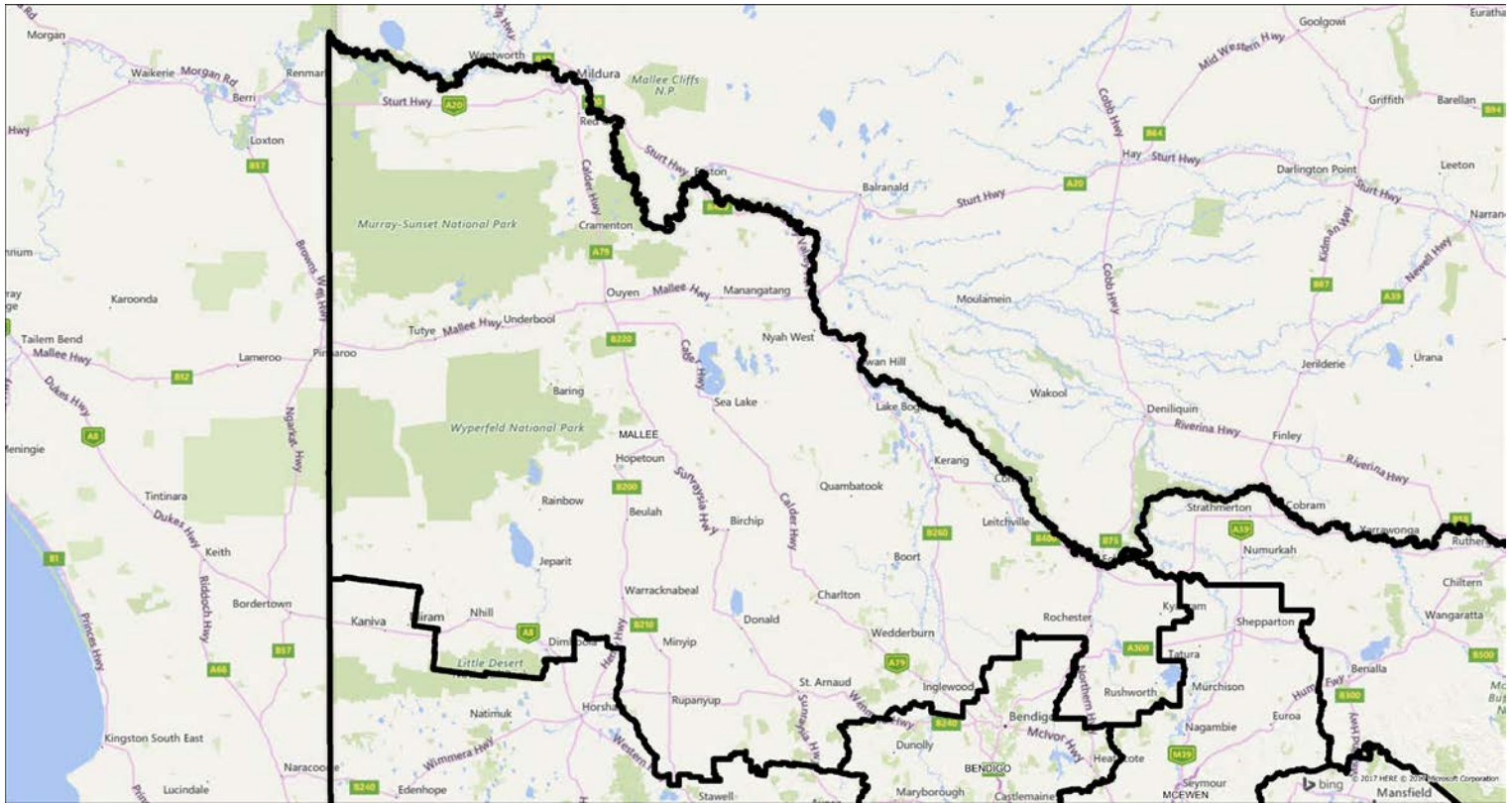
La Trobe



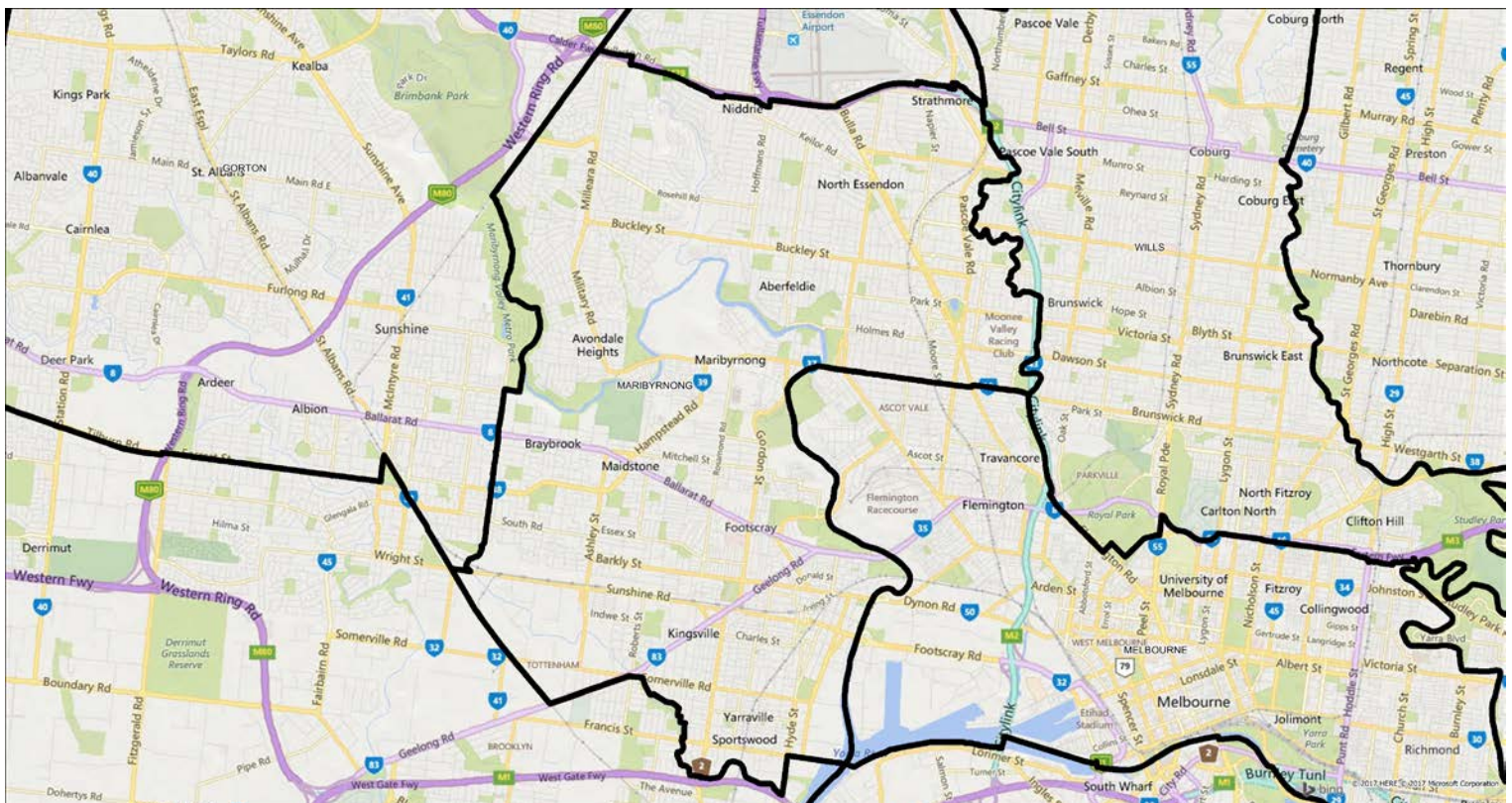
Lalor



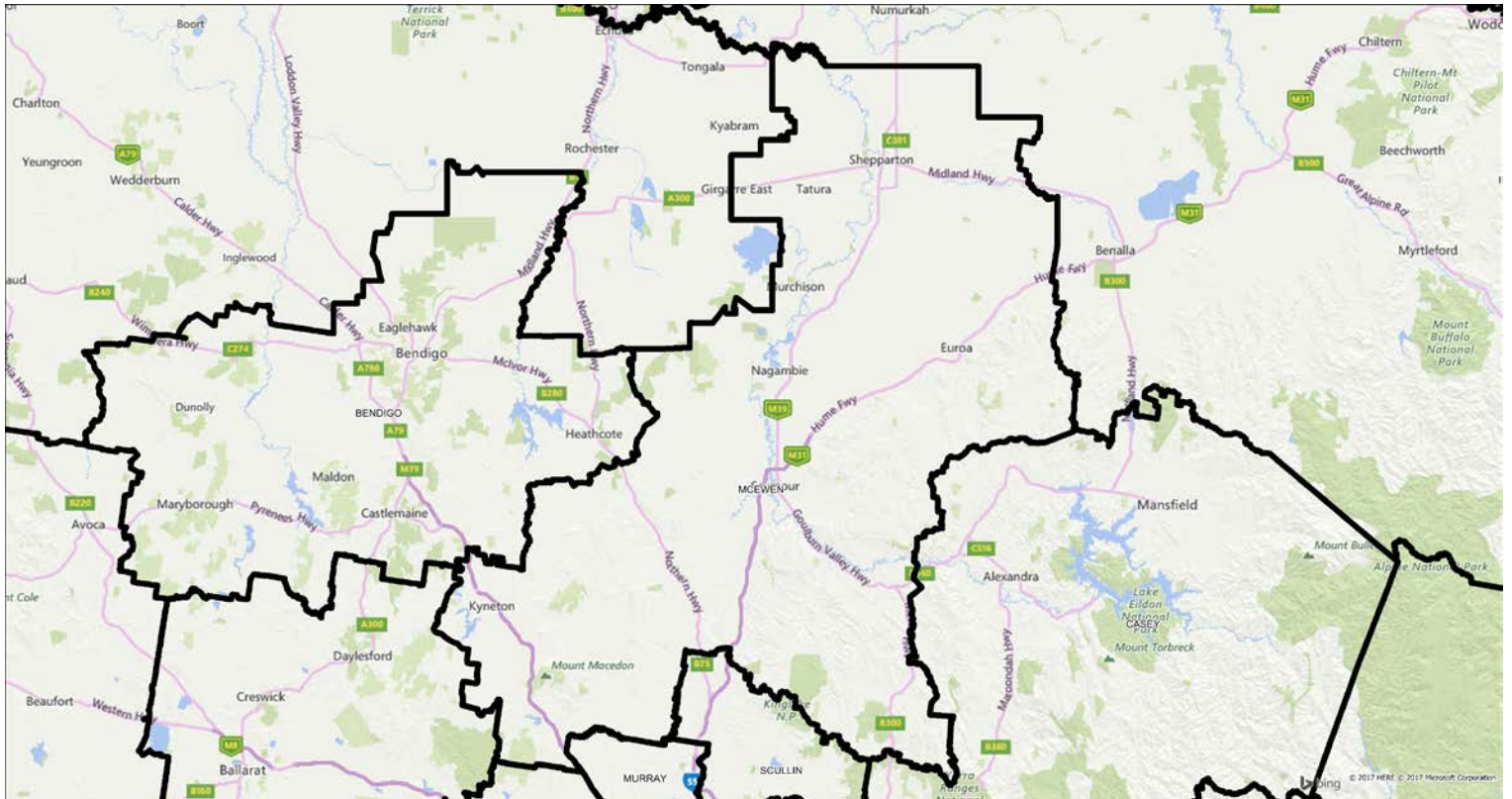
Mallee



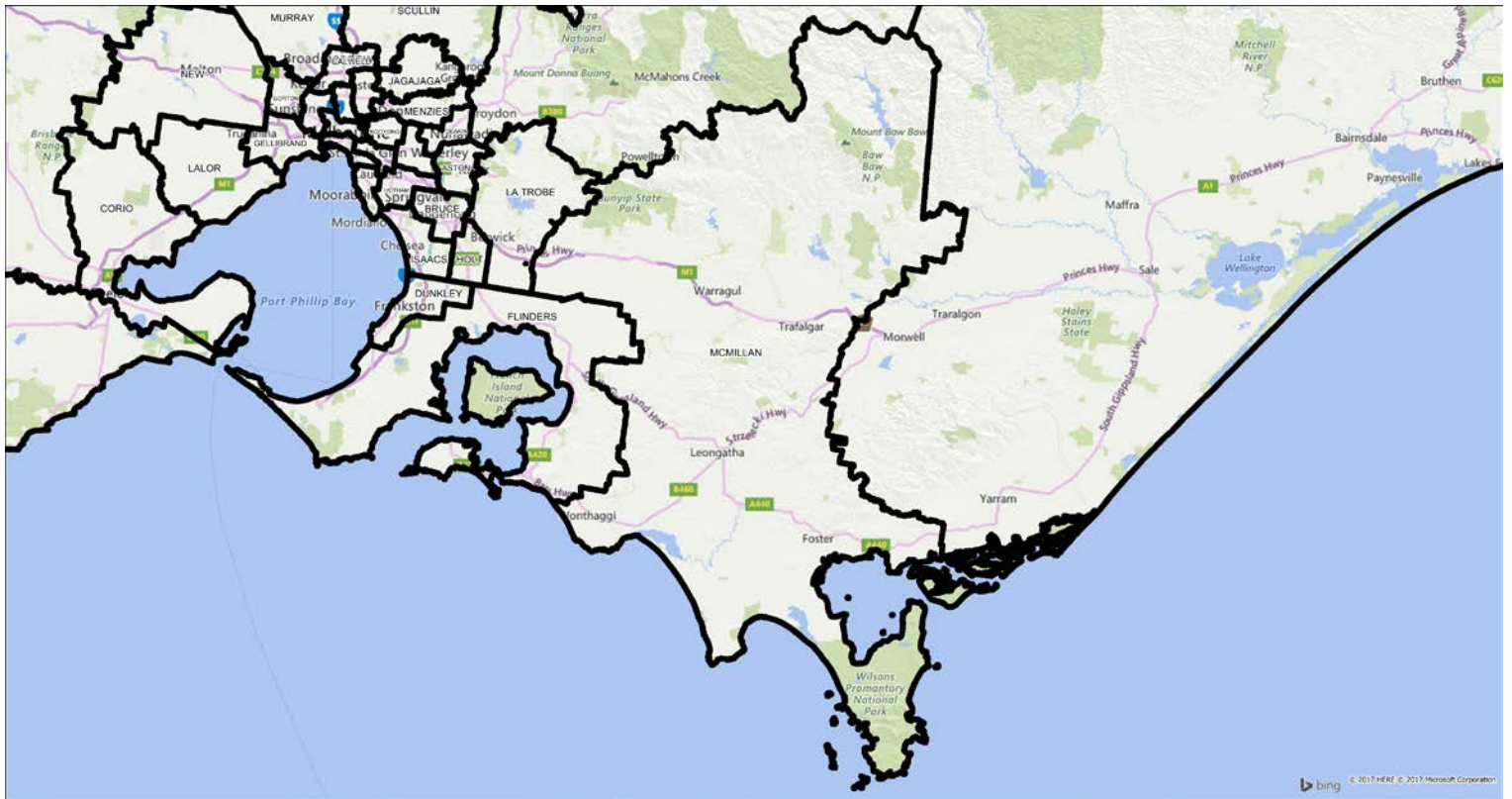
Maribyrnong



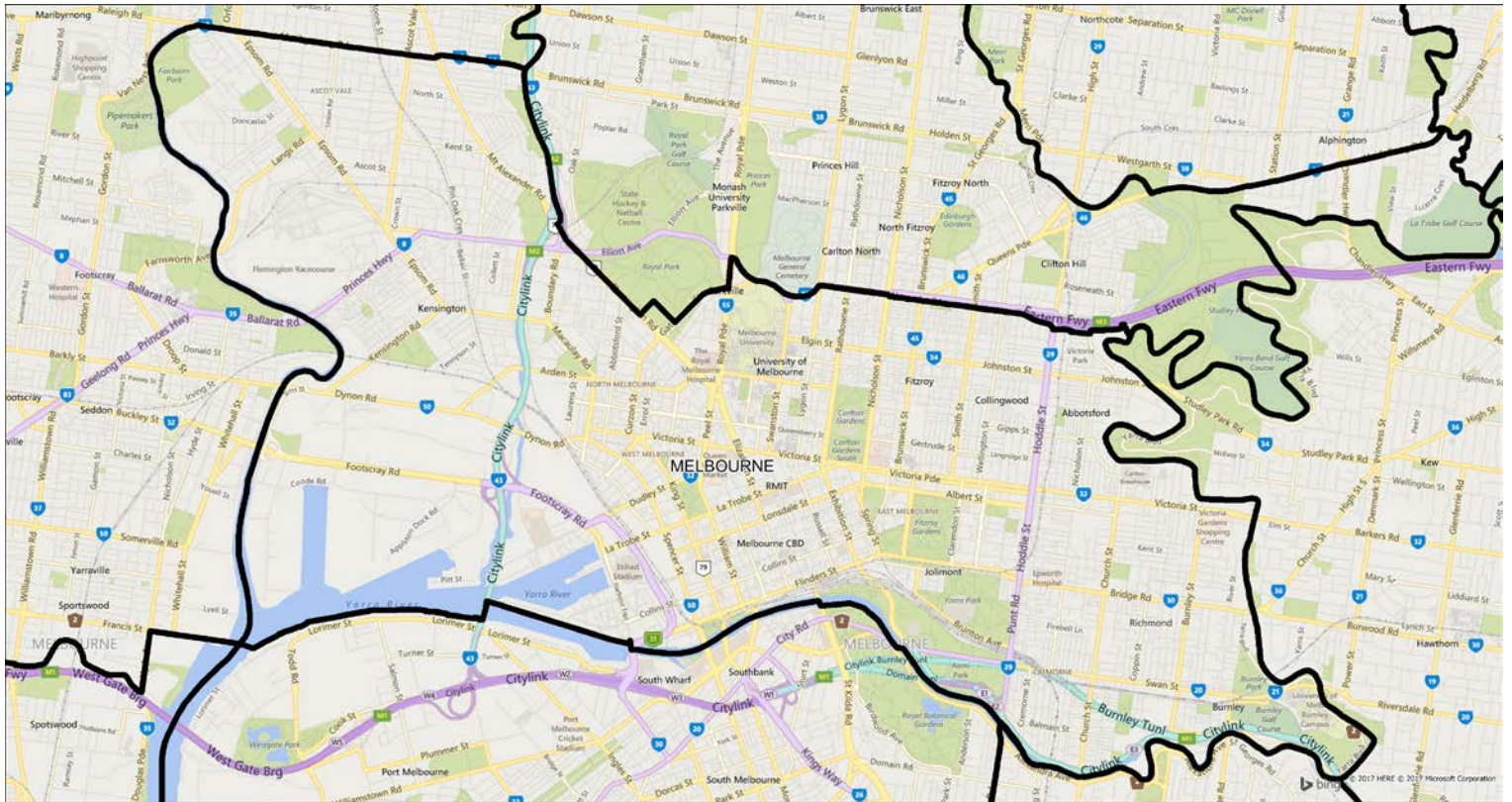
McEwen



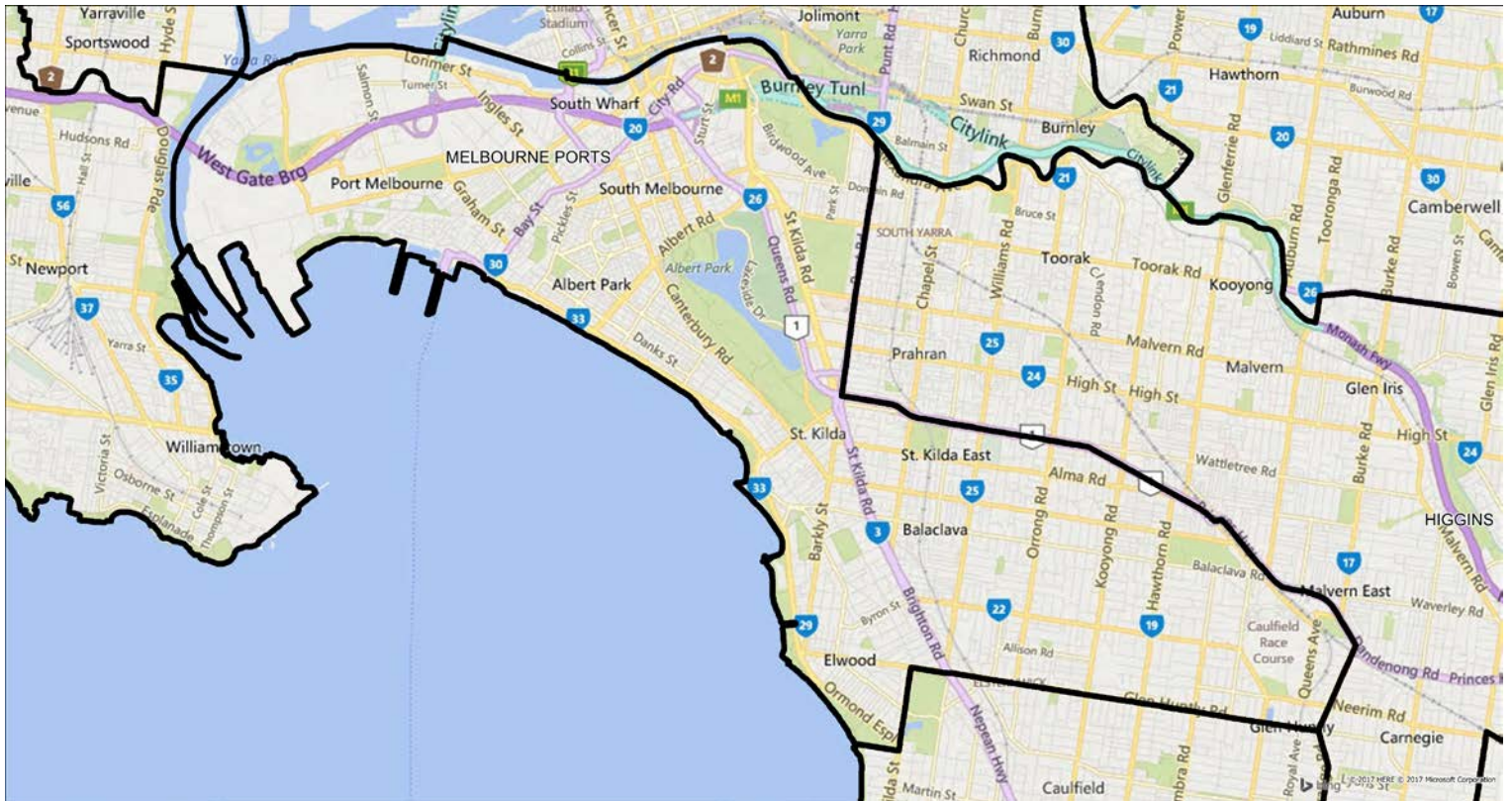
McMillan



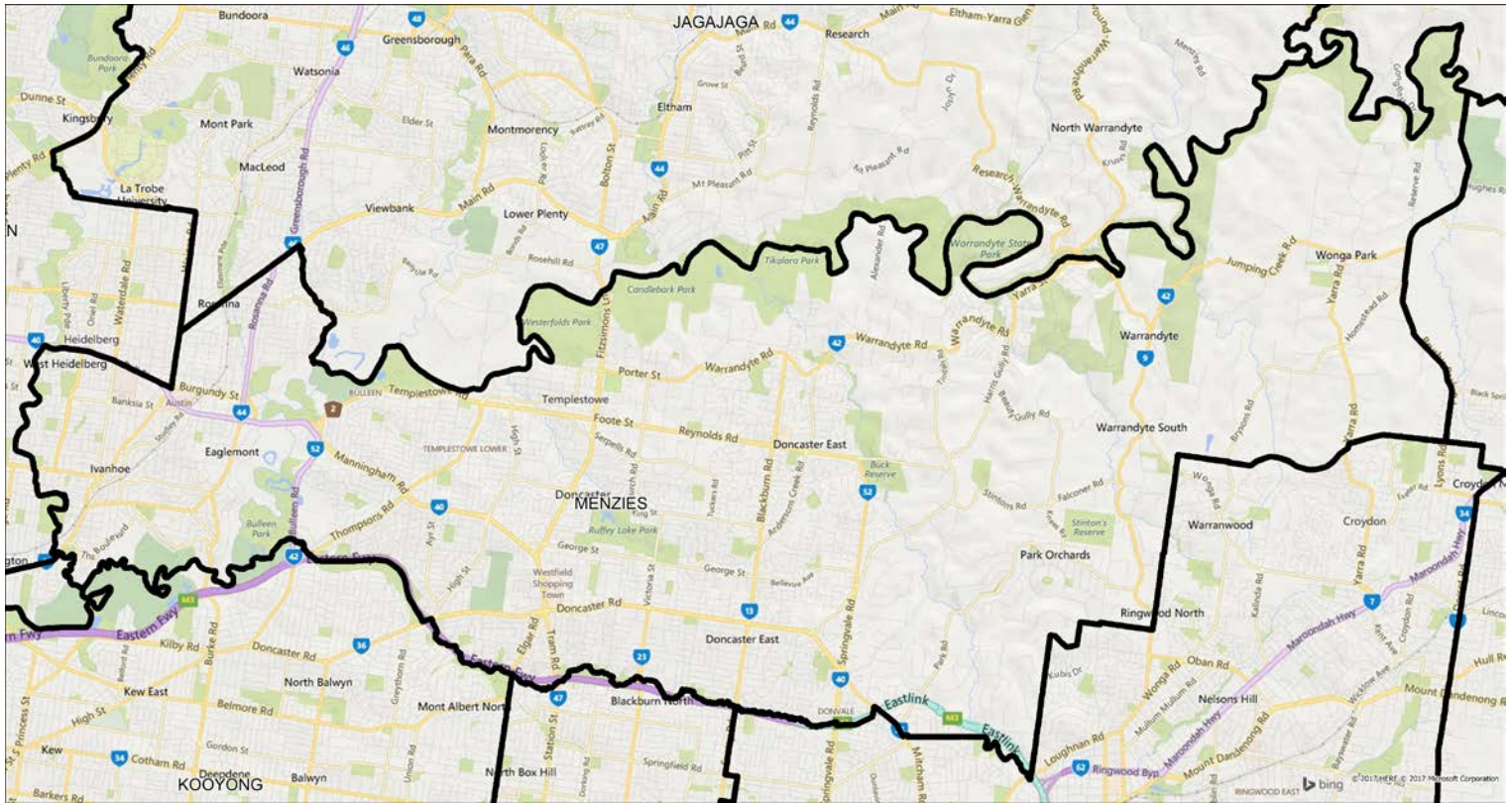
Melbourne



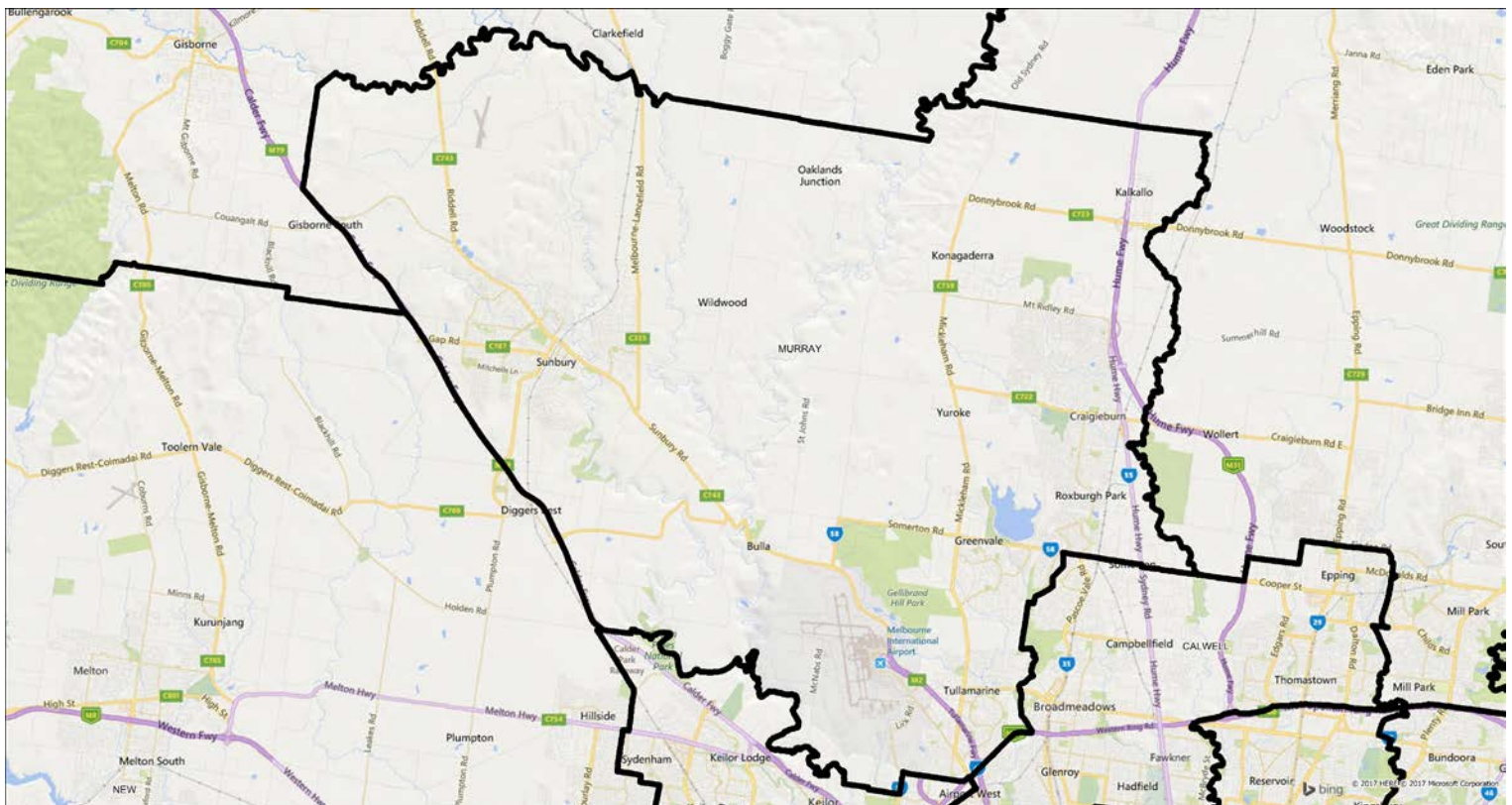
Melbourne Ports



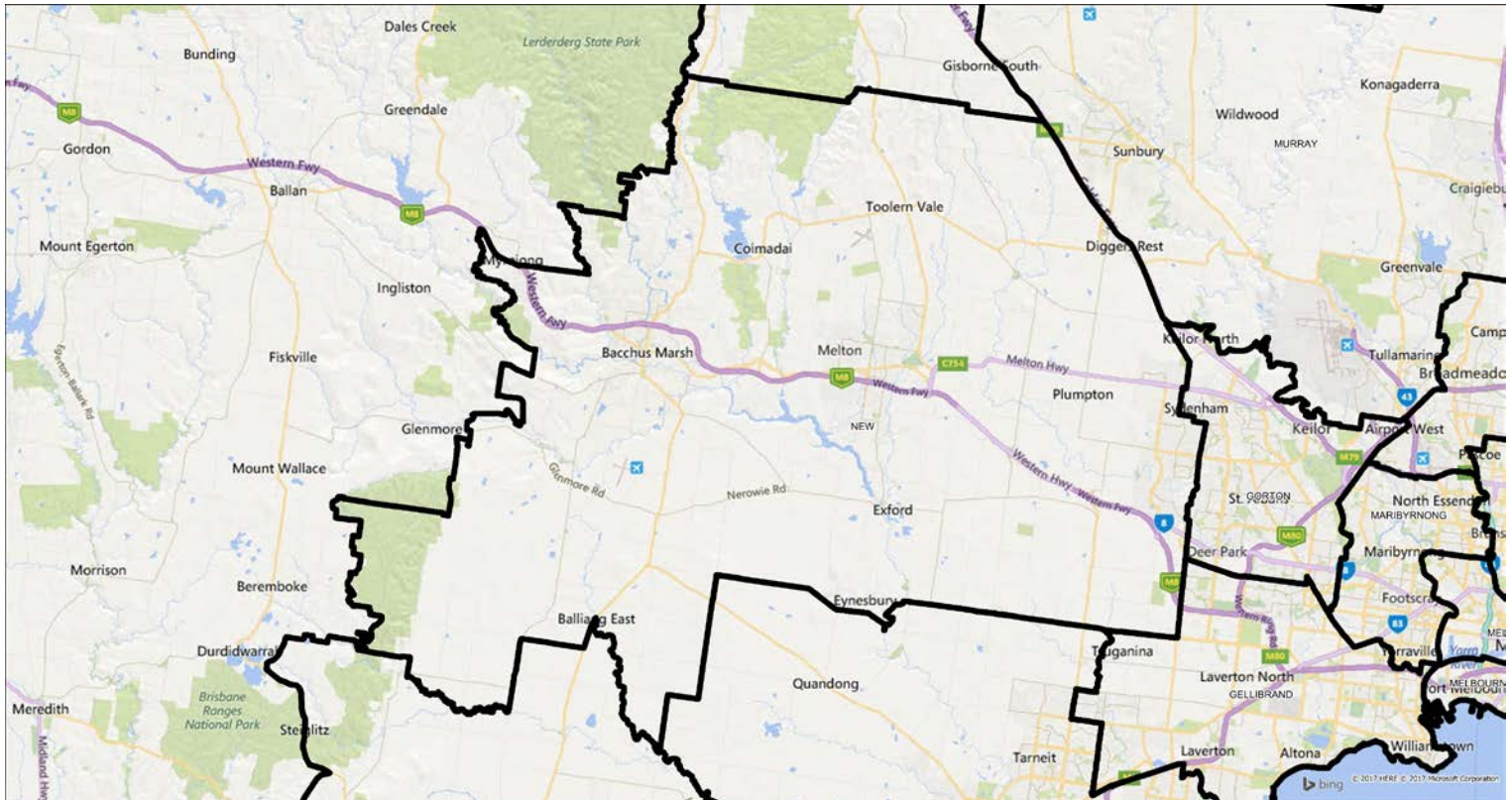
Menzies



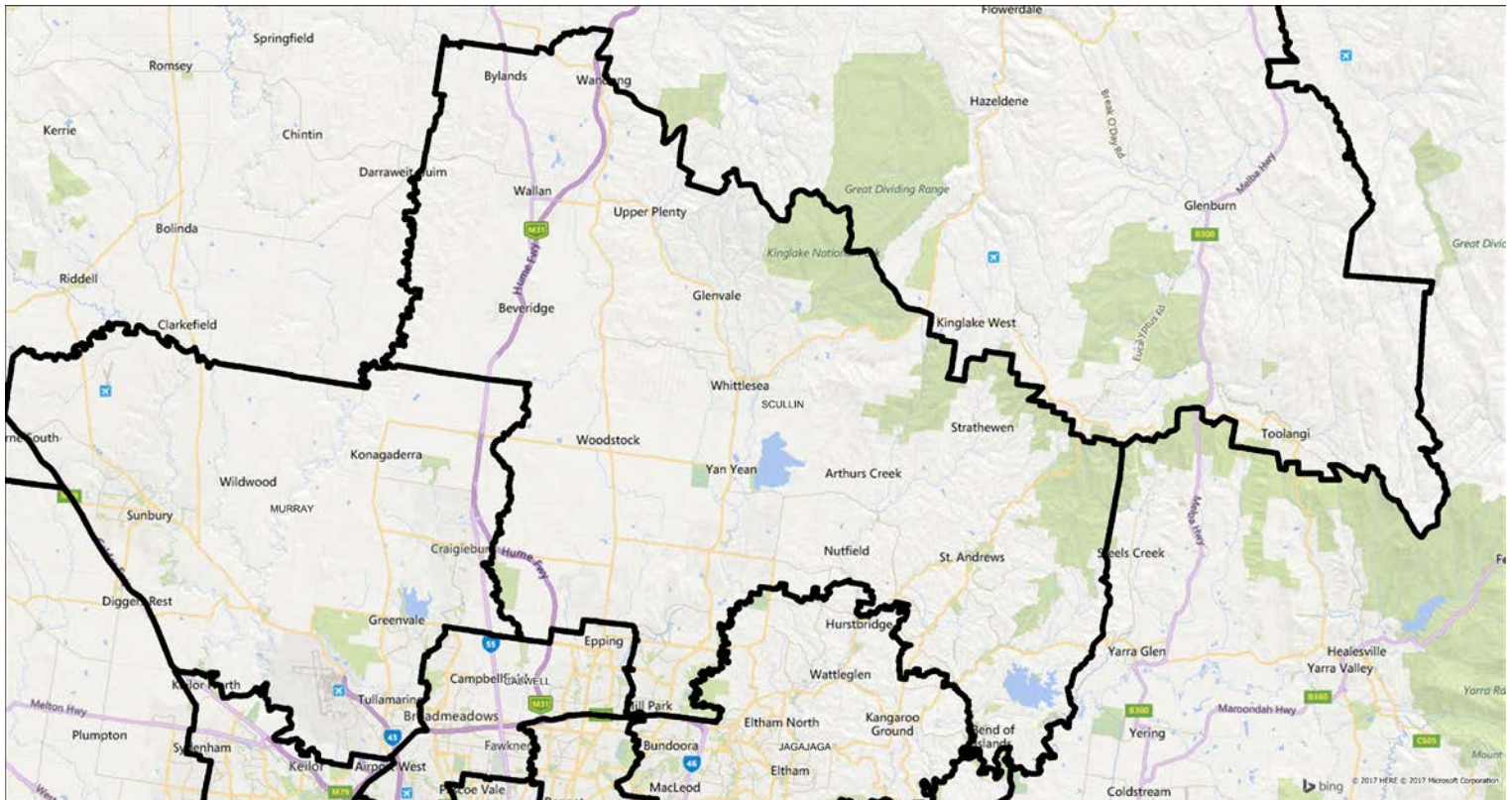
Murray



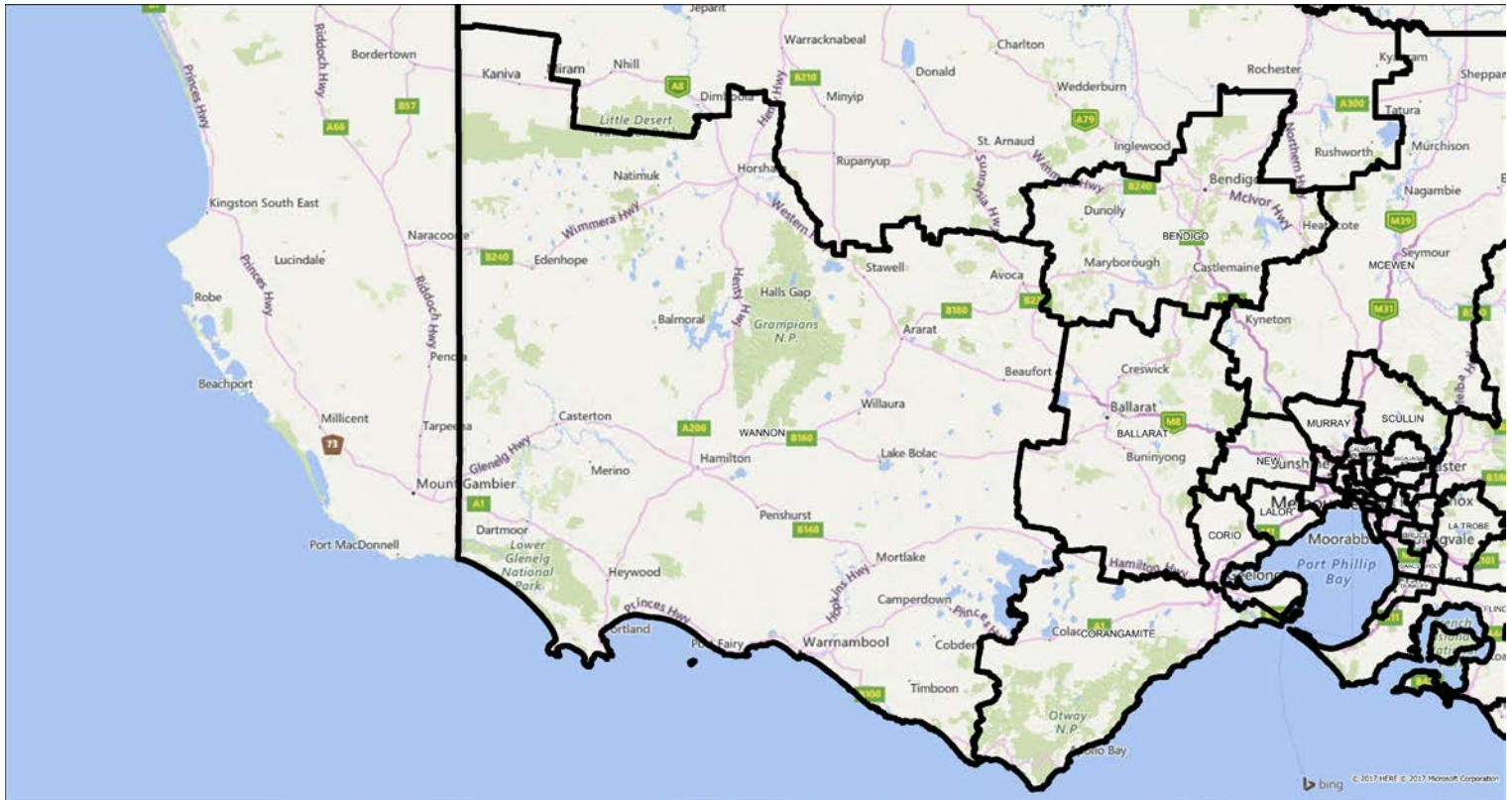
New



Scullin



Wannon



Wills

