



Suggestion 39

The Nationals

26 pages

SUBMISSION TO THE AUSTRALIAN ELECTORAL COMMISSION ON THE REDISTRIBUTION OF FEDERAL ELECTORAL DIVISIONS IN VICTORIA

NOVEMBER 2017

The Nationals - Victoria welcome the opportunity to provide suggestions for consideration as part of the proposed redistribution of federal electorate divisions in Victoria.

The Nationals (then the Country Party) was first represented in the Federal Parliament in 1920, and for a century has been committed to being an undiluted voice for rural and regional electors in the House of Representatives. The Party has always advocated for the construction of divisions based on community of interest, commonality, ease and means of communication and travel and the avoidance of contrived boundaries.

This redistribution increases the number of Victorian members of the House of Representatives from 37 to 38 and provides the opportunity to address some of the current issues arising from Victoria's population growth.

If the current divisions are categorised into metropolitan, peri-urban and regional divisions, the consequences of this population growth can be clearly demonstrated. Table 1 shows how it is the current peri-urban and regional divisions that are projected to be significantly over quota (110,372 electors), whereas the current metropolitan divisions are close to the projected quota.

Table 1

	Average projected enrolment	Sum of variances to projected enrolments
Metropolitan divisions	108,294	-37,406
Peri-Urban divisions	122,685	86,194
Regional divisions	115,505	61,594
TOTAL	-	110,382

It therefore stands to reason that any new division should be created in such a way to ensure that this growing population is appropriately represented in the House of Representatives. The Nationals suggest that this is best achieved by the creation of a new division in the peri-urban areas to the north-west of Melbourne and that the boundaries of the existing Division of McEwen are redrawn to create a truly regional and rural division, with a strong community of interest.

As suggested in our submission¹ to the *2010 Redistribution of Victoria into Electoral Divisions*, it is not in the community's interests to have divisions radiating out from Melbourne which comprise of a solid urban enrolment at the southern extremity with the balance made up of more sparsely populated agricultural communities.

In order to redefine McEwen as a genuine regional and rural division, and to meet enrolment requirements for other divisions, it is necessary to make a number of changes to other existing divisions in regional and rural Victoria. This submission details The Nationals suggested changes.

The consequence of our suggested changes to McEwen (and existing seats in the western half of Victoria) means that a redrawing of boundaries to the peri-urban divisions to the north and west of Melbourne is required. As a party solely dedicated to regional areas, The Nationals do not provide specific suggestions on any redistribution of these divisions. However, this submission does provide a scenario whereby an extra division can be accommodated between Corio to the south west of Melbourne and Scullin & Jagajaga to the north east of Melbourne. For the ease of the Committee, a notional new division² has been hypothesised between Calwell and Scullin and has been referred to as "New Division" in the attached tables. Given the peri-urban nature of the suggested division, The Nationals make no recommendation as to a name.

The Division of Gippsland is geographically constrained to the east, north and south. Although Gippsland is currently within the projected quota, the Division of McMillan to the west needs to lose some electors. As indicated below, The Nationals therefore suggest that the Statistical Area of Foster transfer to Gippsland. This submission does not make further suggestions for the other divisions to the south east of Melbourne, but notes that our suggested scenario allows the current number of divisions in this region to be redrawn, whilst fitting within the maximum and minimum quotas of electors.

Finally, we note that the Victoria Small Area Population Projections³ do not take into account any policy settings that may affect the population distribution across Victoria. The Nationals at both a federal and a state level are delivering policies to decentralise the state's economy. These policies are designed to ensure that population growth is more evenly spread across the state and is not concentrated in urban areas. As a consequence, this submission is consistent with the parameters set out by the Committee, but provides for future population growth that is more balanced between metropolitan and regional areas.

¹ <http://www.aec.gov.au/Electorates/Redistributions/files/2010/vic/public-suggestions/vic0007-luke-osullivan-state-director-the-nationals-for-regional-victoria.pdf>

² "New Division" would include SAs of Lalor, Epping, Craigieburn, Greenvale, Campbellfield and Broadmeadows

³ <http://www.aec.gov.au/Electorates/Redistributions/2017/vic/files/appendix-1.pdf>

Summary of suggested changes

Mallee

		Current Population	Projected Population
Current		99,931	99,874
Loses to	-	-	-
Gains from	Murray	3,515	3,532
	Wannon	6,171	6,064
Proposed		109,617	109,470

Mallee is currently under the projected quota.

Mallee would gain most of the Loddon Statistical Area (SA) from Murray, including Wedderburn and Boort, which have a similar primary production to the rest of Mallee.

The boundary of Mallee would also move south to incorporate parts of the Southern Grampians and Glenelg SAs. The towns of Casterton, Coleraine and Dunkeld, and the entirety of the Grampians National Park would fall into Mallee.

Wannon

		Current Population	Projected Population
Current		99,867	100,062
Loses to	Mallee	6,171	6,064
	Bendigo	10,173	10,163
Gains from	Corangamite	22,674	23,025
Proposed		106,197	106,680

Wannon is currently under the projected quota and will also need to gain electors as a consequence of suggested changes to Mallee and Bendigo.

As a consequence of Mallee moving south, the boundary of Wannon would move to the east to incorporate Colac, Golden Plains and the Otway SAs.

Maryborough would transfer to Bendigo given the town's strong connections with the City of Bendigo.

Murray

		Current Population	Projected Population
Current		105,643	106,668
Loses to	Mallee	3,515	3,532
	Bendigo	1,513	1,403
Gains from	McEwen	7,825	7,880
Proposed		108,440	109,613

Murray is currently just within the projected quota, however with the need for Mallee to gain electors, requires a shift to the south or east.

Murray would lose the SA of Loddon to Mallee, with the exception of Inglewood and Bridgewater on Loddon which would transfer to Bendigo.

Murray would gain Seymour and the remaining parts of Nagambie from McEwen.

McEwen

		Current Population	Projected Population
Current		140,152	151,144
Loses to	Murray	7,717	7,880
	Scullin	32,846	37,305
	New Division	21,844	24,981
Gains from	Gorton	1,798	1,949
	Bendigo	18,534	18,936
	Ballarat	7,137	7,225
Proposed		105,214	109,197

McEwen is significantly over the projected quota and, due to the rapid growth at the south of the electorate, has become an undesirable mix between urban and regional communities.

McEwen would see the most changes and would see its character altered significantly.

At the north of the division, the town of Seymour, and the remaining parts of Nagambie, would transfer to Murray.

In the south of the division, the peri-urban areas of South Morang, Craigieburn, Epping and Greenvale would transfer either to Scullin or a proposed new division on the edge of metropolitan Melbourne.

These losses would be offset by transferring areas with similar regional characteristics into McEwen.

Sunbury South would transfer from Gorton to McEwen allowing the whole town of Sunbury to be in the same division.

McEwen would also gain the SAs of Woodend, Riddells Creek, Macedon, Kyneton and Heathcote from Bendigo. These are all smaller regional communities, having similar characteristics distinct from the City of Bendigo.

Daylesford would also move from Ballarat to McEwen, again being a smaller regional community.

Bendigo

		Current Population	Projected Population
Current		112,053	114,847
Loses to	McEwen	18,642	19,045
	Murray	108	109
Gains from	Wannon	10,173	10,163
	Murray	1,393	1,403
Proposed		105,076	107,368

Bendigo is currently over the projected quota and needs to lose some smaller satellite communities to surrounding divisions.

The smaller regional towns of Woodend, Ridells Creek, Macedon, Kyneton and Heathcote would transfer to McEwen, focusing the Division of Bendigo on the City of Bendigo and its immediate surrounds.

Maryborough would transfer from Wannon to Bendigo, given Maryborough's significant connections to the City of Bendigo.

Ballarat

		Current Population	Projected Population
Current		114,365	117,282
Loses to	McEwen	7,137	7,225
Gains from	-	-	-
Proposed		107,228	110,047

Ballarat is currently over the projected quota and therefore loses Daylesford to McEwen.

Corangamite

		Current Population	Projected Population
Current		114,985	119,828
Loses to	Wannon	22,674	23,205
Gains from	Corio	10,899	11,299
Proposed		103,210	107,922

Corangamite is currently over the projected quota.

The SAs of Colac, Otway and Golden Plains transfer into Wannon, requiring Corangamite to gain electorates from the east in Corio.

Corangamite gains most of the Bellarine Peninsula from Corio, including Portarlington.

Gippsland

		Current Population	Projected Population
Current		105,907	106,760
Loses to	-	-	-
Gains from	McMillan	6,702	6,743
Proposed		112,609	113,503

Gippsland is currently within the projected quota. However, the neighbouring division of McMillan is significantly over quota.

Given the natural boundaries surrounding Gippsland, it is only practical for Gippsland to gain electors by transfer from McMillan. Therefore, Gippsland would gain the SAs of Foster and Wilsons Promontory from McMillan.

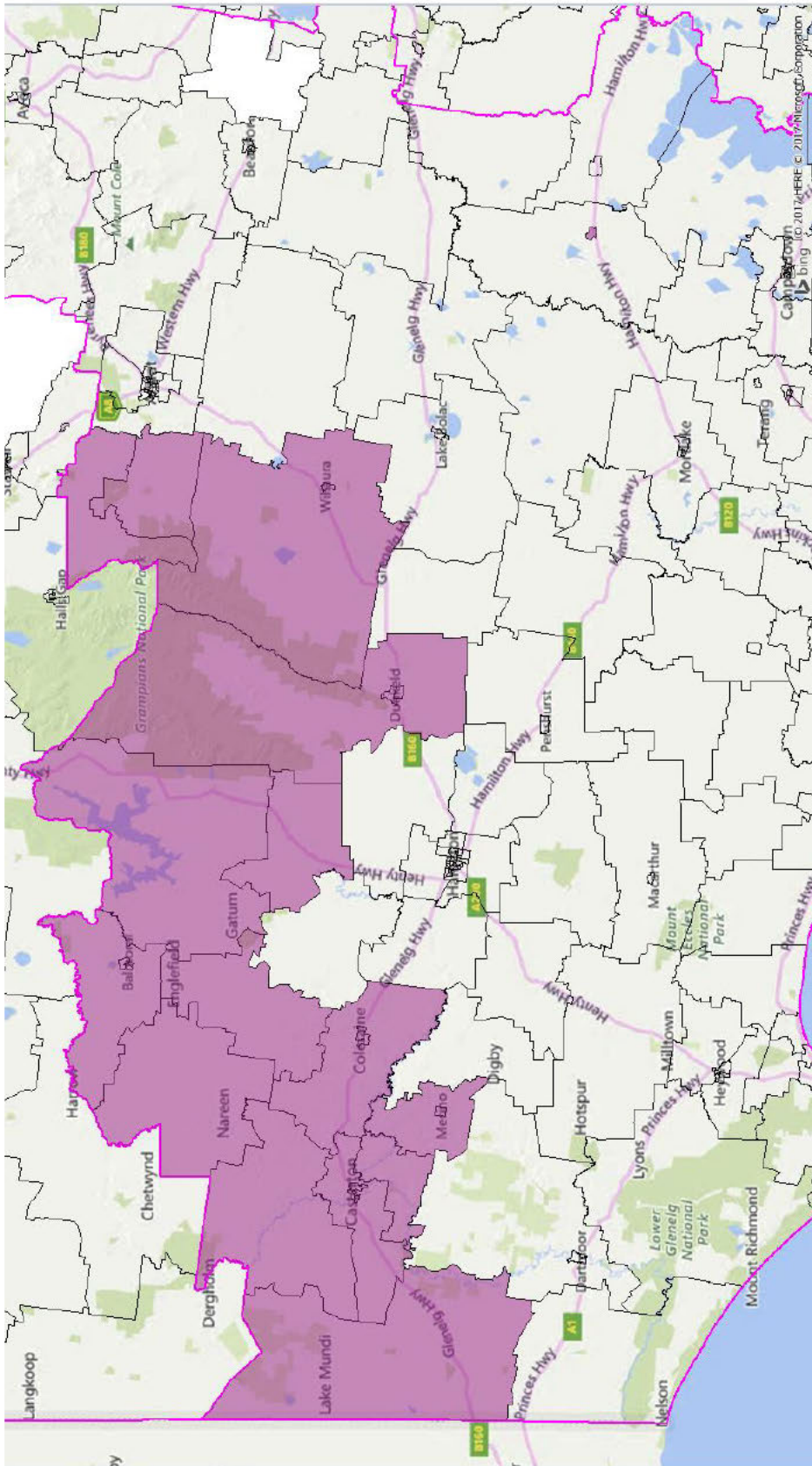
Indi

		Current Population	Projected Population
Current		105,823	107,510
Loses to	-	-	-
Gains from	-	-	-
Proposed		105,823	107,510

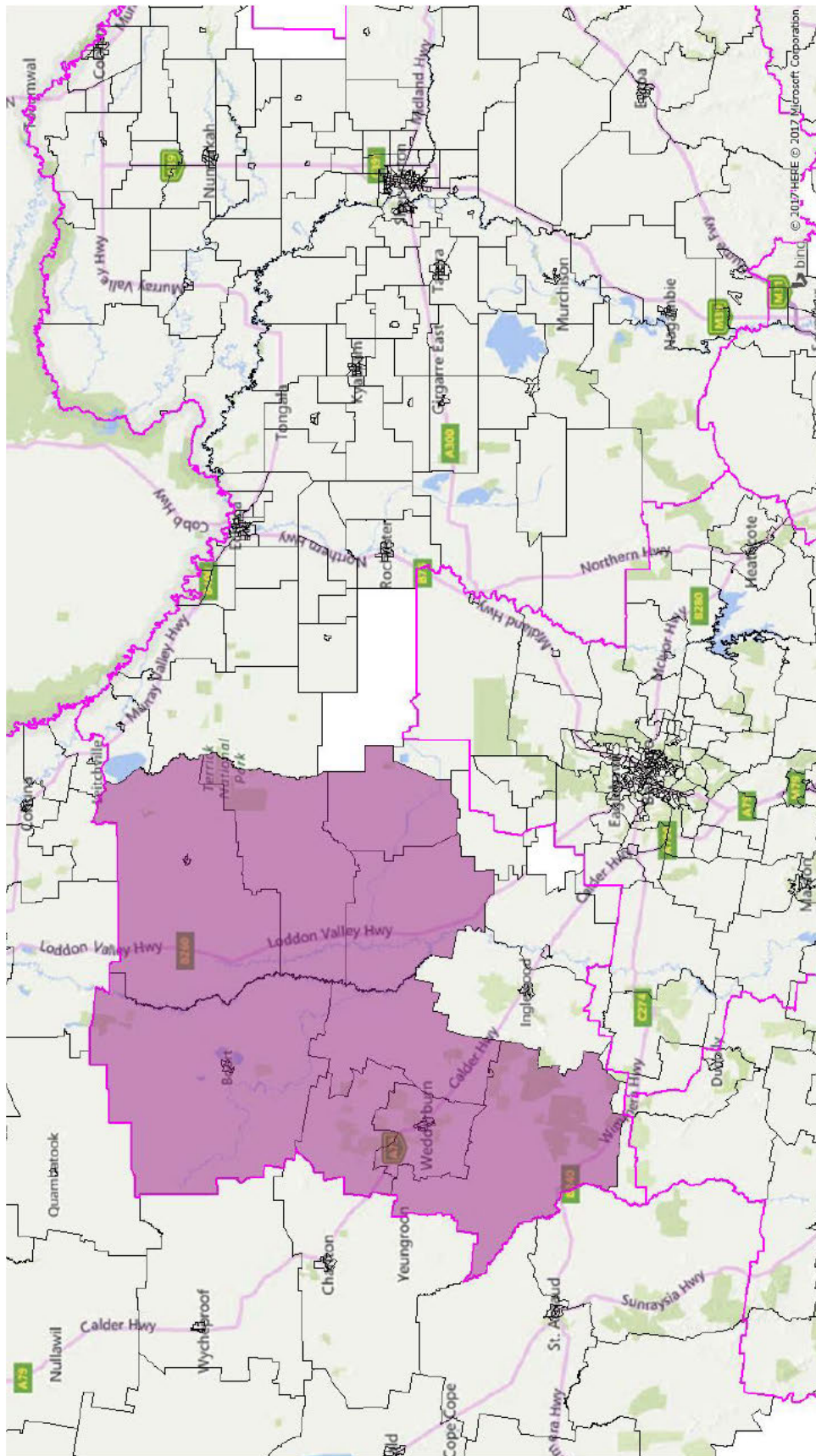
Indi is currently within the projected quota and there are no proposed changes.

Mallee

Indication of SAs moving from Wannon to Mallee



Indication of SAs moving from Murray to Mallee

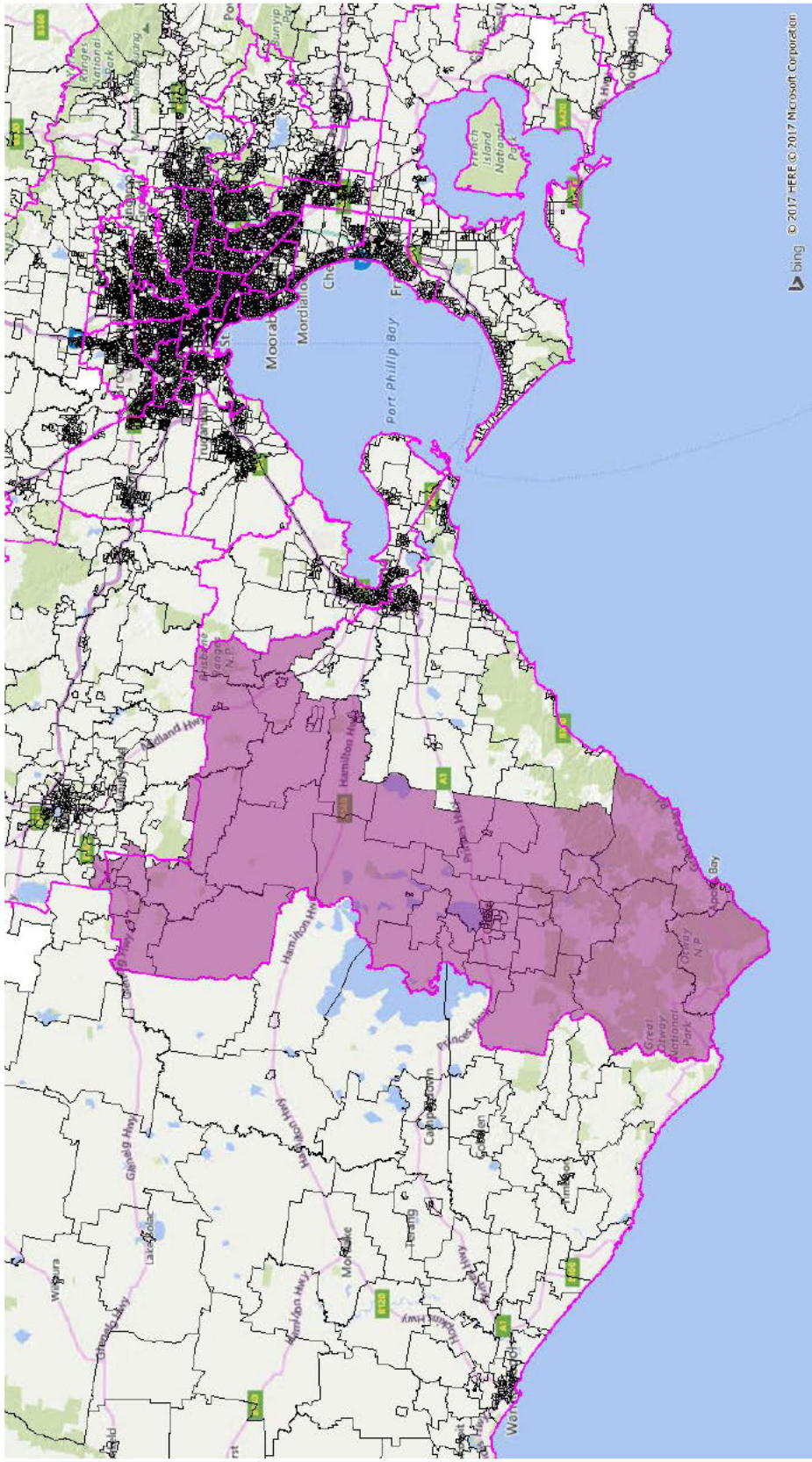


Division	SA2 Name	SA1 Code
WANNON	Southern Grampians	2142320
WANNON	Southern Grampians	2142318
WANNON	Southern Grampians	2142315
WANNON	Southern Grampians	2142314
WANNON	Southern Grampians	2142313
WANNON	Southern Grampians	2142309
WANNON	Southern Grampians	2142308
WANNON	Southern Grampians	2142307
WANNON	Southern Grampians	2142305
WANNON	Southern Grampians	2142304
WANNON	Southern Grampians	2142303
WANNON	Southern Grampians	2142302
WANNON	Glenelg (Vic.)	2142028
WANNON	Glenelg (Vic.)	2142026
WANNON	Glenelg (Vic.)	2142020
WANNON	Glenelg (Vic.)	2142019
WANNON	Glenelg (Vic.)	2142016
WANNON	Glenelg (Vic.)	2142014
WANNON	Glenelg (Vic.)	2142011
WANNON	Glenelg (Vic.)	2142010
WANNON	Glenelg (Vic.)	2142009
WANNON	Glenelg (Vic.)	2142003
WANNON	Glenelg (Vic.)	2142002
WANNON	Corangamite - North	2142705
WANNON	Corangamite - North	2142701
WANNON	Ararat Region	2138710
WANNON	Ararat Region	2138705
WANNON	Ararat Region	2138702
WANNON	Ararat Region	2138701
MURRAY	Loddon	2103321
MURRAY	Loddon	2103320
MURRAY	Loddon	2103319
MURRAY	Loddon	2103318
MURRAY	Loddon	2103317
MURRAY	Loddon	2103316
MURRAY	Loddon	2103315
MURRAY	Loddon	2103314
MURRAY	Loddon	2103313
MURRAY	Loddon	2103312
MURRAY	Loddon	2103311
MURRAY	Loddon	2103310
MURRAY	Loddon	2103309

MURRAY	Loddon	2103308
MURRAY	Loddon	2103305

Wannon

Indication of SAs moving from Corangamite to Wannon

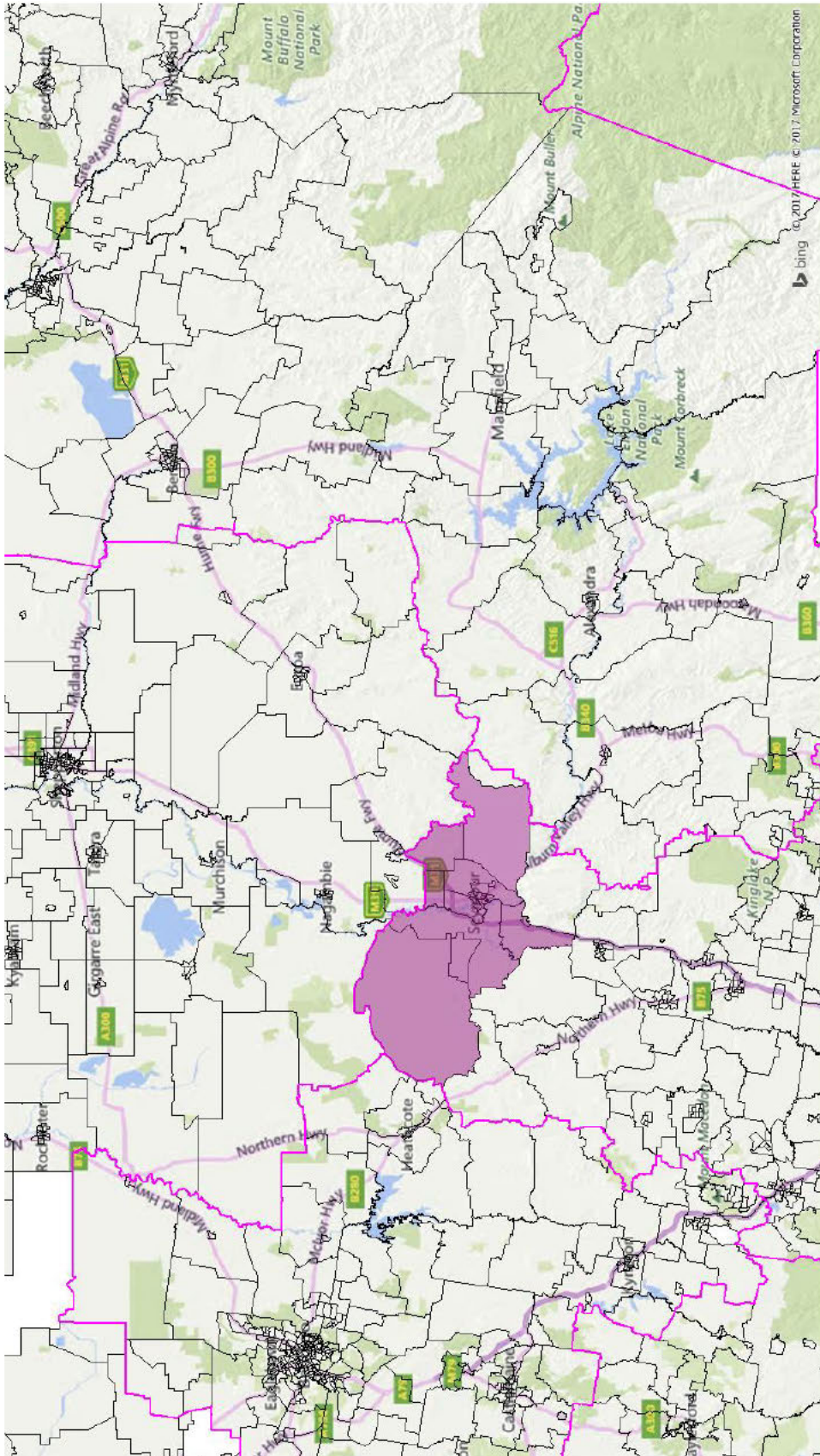


Division	SA2 Name	SA1 Code
CORANGAMITE	Otway	2143110
CORANGAMITE	Otway	2143109
CORANGAMITE	Otway	2143108
CORANGAMITE	Otway	2143107
CORANGAMITE	Otway	2143106
CORANGAMITE	Otway	2143105
CORANGAMITE	Otway	2143104
CORANGAMITE	Otway	2143103
CORANGAMITE	Otway	2143102
CORANGAMITE	Otway	2143101
CORANGAMITE	Golden Plains - South	2103516
CORANGAMITE	Golden Plains - South	2103515
CORANGAMITE	Golden Plains - South	2103514
CORANGAMITE	Golden Plains - South	2103513
CORANGAMITE	Golden Plains - South	2103512
CORANGAMITE	Golden Plains - South	2103511
CORANGAMITE	Golden Plains - South	2103510
CORANGAMITE	Golden Plains - South	2103509
CORANGAMITE	Golden Plains - South	2103508
CORANGAMITE	Golden Plains - South	2103507
CORANGAMITE	Golden Plains - South	2103506
CORANGAMITE	Golden Plains - South	2103505
CORANGAMITE	Golden Plains - South	2103504
CORANGAMITE	Golden Plains - South	2103503
CORANGAMITE	Golden Plains - South	2103502
CORANGAMITE	Golden Plains - South	2103501
CORANGAMITE	Golden Plains - North	2101512
CORANGAMITE	Golden Plains - North	2101511
CORANGAMITE	Golden Plains - North	2101510
CORANGAMITE	Golden Plains - North	2101508
CORANGAMITE	Golden Plains - North	2101507
CORANGAMITE	Golden Plains - North	2101506
CORANGAMITE	Golden Plains - North	2101505
CORANGAMITE	Golden Plains - North	2101504
CORANGAMITE	Golden Plains - North	2101503
CORANGAMITE	Colac Region	2142617
CORANGAMITE	Colac Region	2142616
CORANGAMITE	Colac Region	2142615
CORANGAMITE	Colac Region	2142614
CORANGAMITE	Colac Region	2142613
CORANGAMITE	Colac Region	2142612

CORANGAMITE	Colac Region	2142611
CORANGAMITE	Colac Region	2142610
CORANGAMITE	Colac Region	2142609
CORANGAMITE	Colac Region	2142608
CORANGAMITE	Colac Region	2142607
CORANGAMITE	Colac Region	2142606
CORANGAMITE	Colac Region	2142605
CORANGAMITE	Colac Region	2142604
CORANGAMITE	Colac Region	2142603
CORANGAMITE	Colac Region	2142602
CORANGAMITE	Colac Region	2142601
CORANGAMITE	Colac	2142531
CORANGAMITE	Colac	2142530
CORANGAMITE	Colac	2142529
CORANGAMITE	Colac	2142528
CORANGAMITE	Colac	2142527
CORANGAMITE	Colac	2142526
CORANGAMITE	Colac	2142525
CORANGAMITE	Colac	2142524
CORANGAMITE	Colac	2142523
CORANGAMITE	Colac	2142522
CORANGAMITE	Colac	2142521
CORANGAMITE	Colac	2142520
CORANGAMITE	Colac	2142519
CORANGAMITE	Colac	2142518
CORANGAMITE	Colac	2142517
CORANGAMITE	Colac	2142516
CORANGAMITE	Colac	2142515
CORANGAMITE	Colac	2142514
CORANGAMITE	Colac	2142513
CORANGAMITE	Colac	2142512
CORANGAMITE	Colac	2142511
CORANGAMITE	Colac	2142510
CORANGAMITE	Colac	2142509
CORANGAMITE	Colac	2142508
CORANGAMITE	Colac	2142507
CORANGAMITE	Colac	2142506
CORANGAMITE	Colac	2142505
CORANGAMITE	Colac	2142504
CORANGAMITE	Colac	2142503
CORANGAMITE	Colac	2142502
CORANGAMITE	Colac	2142501

Murray

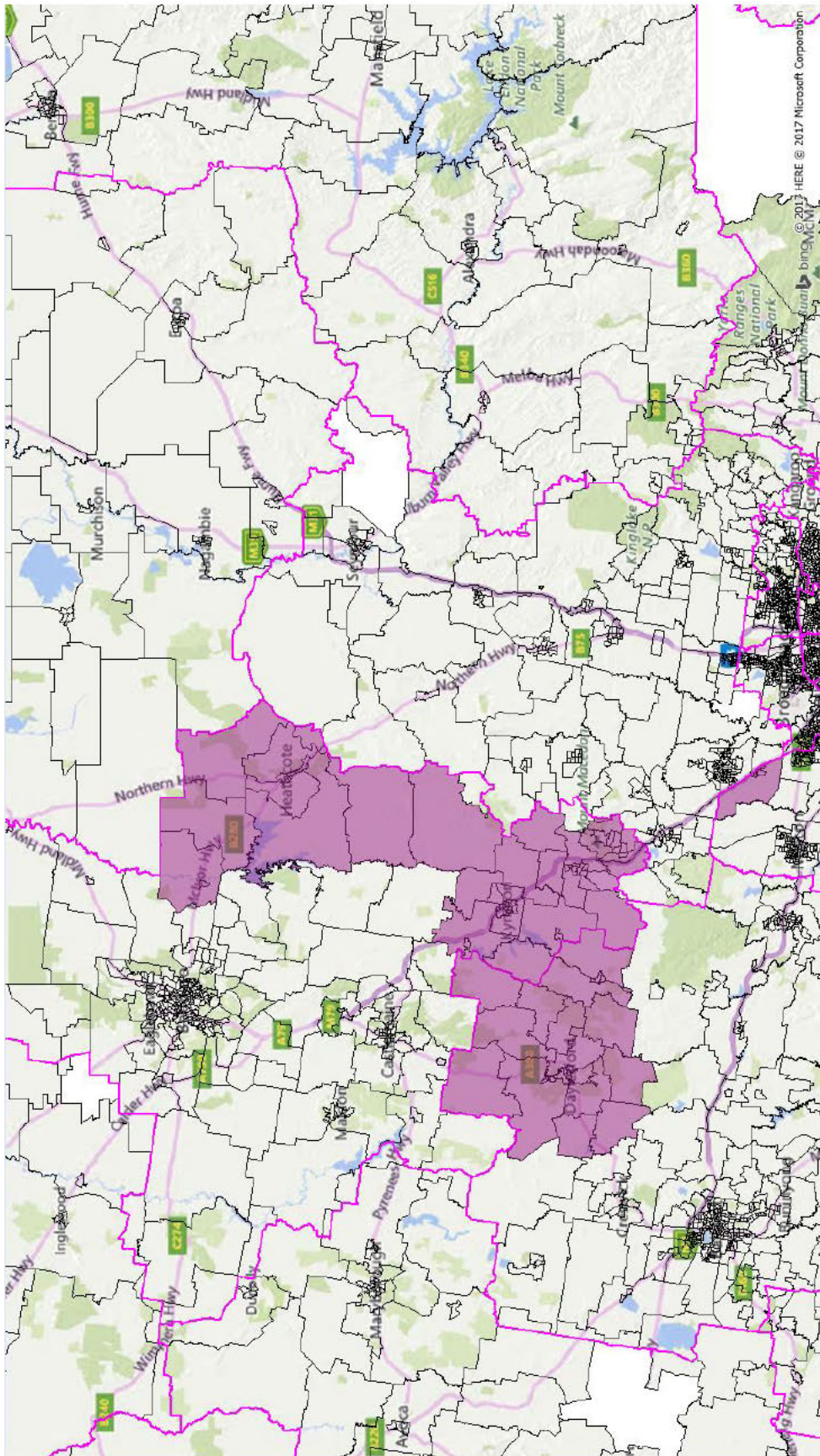
Indication of SAs moving from McEwen and Bendigo to Murray



Division	SA2 Name	SA1 Code
MCEWEN	Seymour Region	2106011
MCEWEN	Seymour Region	2106010
MCEWEN	Seymour Region	2106009
MCEWEN	Seymour Region	2106008
MCEWEN	Seymour Region	2106007
MCEWEN	Seymour Region	2106006
MCEWEN	Seymour Region	2106005
MCEWEN	Seymour Region	2106004
MCEWEN	Seymour Region	2106003
MCEWEN	Seymour Region	2106002
MCEWEN	Seymour Region	2106001
MCEWEN	Seymour	2105917
MCEWEN	Seymour	2105916
MCEWEN	Seymour	2105915
MCEWEN	Seymour	2105914
MCEWEN	Seymour	2105913
MCEWEN	Seymour	2105912
MCEWEN	Seymour	2105911
MCEWEN	Seymour	2105910
MCEWEN	Seymour	2105909
MCEWEN	Seymour	2105908
MCEWEN	Seymour	2105907
MCEWEN	Seymour	2105906
MCEWEN	Seymour	2105905
MCEWEN	Seymour	2105904
MCEWEN	Seymour	2105903
MCEWEN	Seymour	2105902
MCEWEN	Seymour	2105901
MCEWEN	Nagambie	2105811
MCEWEN	Nagambie	2105803
BENDIGO	Seymour Region	2106010
BENDIGO	Seymour Region	2106009

McEwen

Indication of SAs moving from Bendigo, Gorton and Ballarat to McEwen



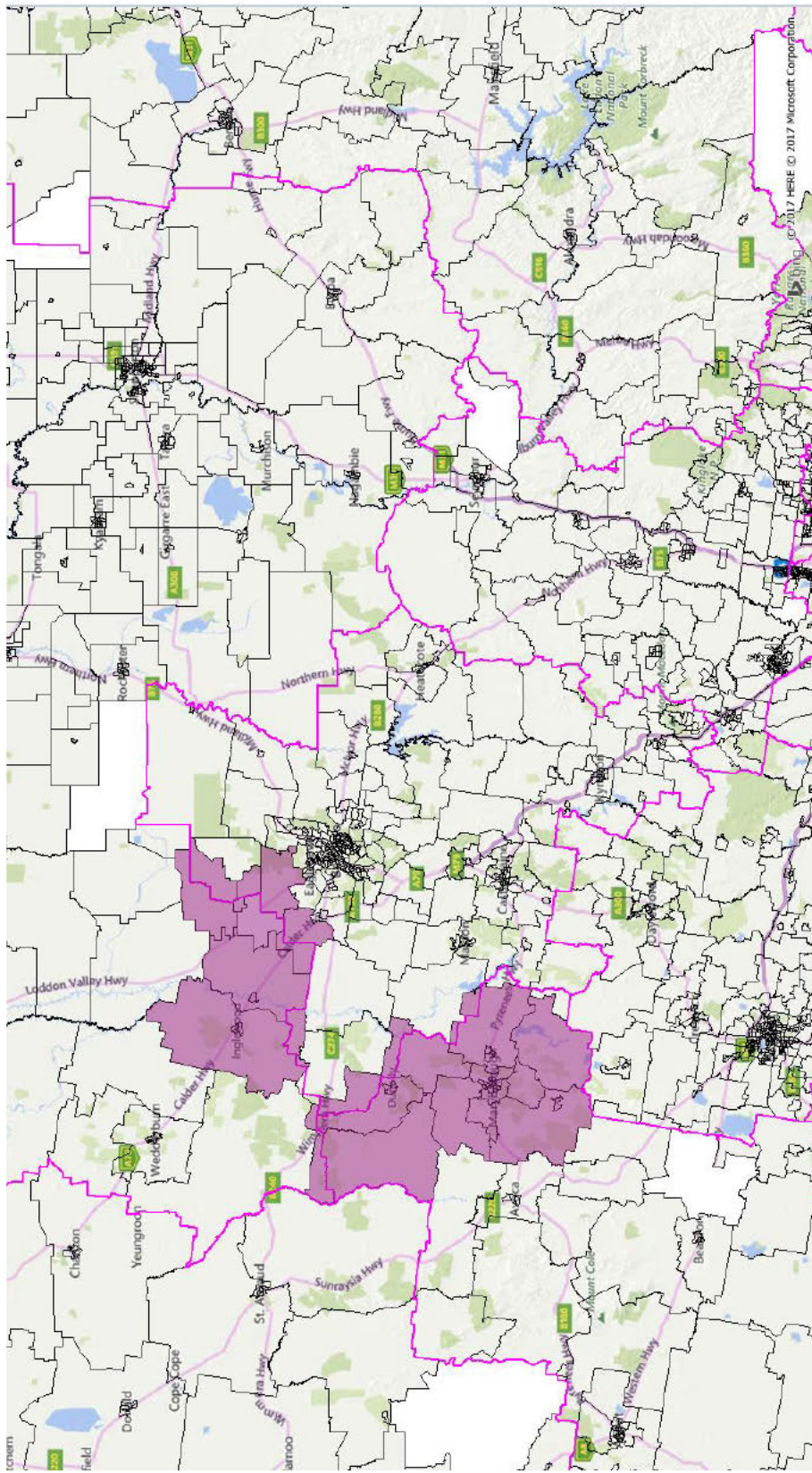
Division	SA2 Name	SA1 Code
GORTON	Sunbury - South	2124149
GORTON	Sunbury - South	2124147
GORTON	Sunbury - South	2124143
GORTON	Sunbury - South	2124142
GORTON	Sunbury - South	2124141
GORTON	Sunbury - South	2124140
BENDIGO	Woodend	2103116
BENDIGO	Woodend	2103115
BENDIGO	Woodend	2103114
BENDIGO	Woodend	2103113
BENDIGO	Woodend	2103112
BENDIGO	Woodend	2103111
BENDIGO	Woodend	2103110
BENDIGO	Woodend	2103109
BENDIGO	Woodend	2103108
BENDIGO	Woodend	2103107
BENDIGO	Woodend	2103106
BENDIGO	Woodend	2103105
BENDIGO	Woodend	2103104
BENDIGO	Woodend	2103103
BENDIGO	Woodend	2103102
BENDIGO	Woodend	2103101
BENDIGO	Riddells Creek	2123407
BENDIGO	Macedon	2123310
BENDIGO	Macedon	2123309
BENDIGO	Macedon	2123308
BENDIGO	Macedon	2123307
BENDIGO	Macedon	2123306
BENDIGO	Macedon	2123305
BENDIGO	Macedon	2123304
BENDIGO	Macedon	2123303
BENDIGO	Macedon	2123302
BENDIGO	Macedon	2123301
BENDIGO	Kyneton	2103023
BENDIGO	Kyneton	2103022
BENDIGO	Kyneton	2103021
BENDIGO	Kyneton	2103020
BENDIGO	Kyneton	2103019
BENDIGO	Kyneton	2103018
BENDIGO	Kyneton	2103017
BENDIGO	Kyneton	2103016
BENDIGO	Kyneton	2103015

BENDIGO	Kyneton	2103014
BENDIGO	Kyneton	2103013
BENDIGO	Kyneton	2103012
BENDIGO	Kyneton	2103011
BENDIGO	Kyneton	2103010
BENDIGO	Kyneton	2103009
BENDIGO	Kyneton	2103008
BENDIGO	Kyneton	2103007
BENDIGO	Kyneton	2103006
BENDIGO	Kyneton	2103005
BENDIGO	Kyneton	2103004
BENDIGO	Kyneton	2103003
BENDIGO	Kyneton	2103002
BENDIGO	Kyneton	2103001
BENDIGO	Heathcote	2102913
BENDIGO	Heathcote	2102912
BENDIGO	Heathcote	2102911
BENDIGO	Heathcote	2102910
BENDIGO	Heathcote	2102909
BENDIGO	Heathcote	2102908
BENDIGO	Heathcote	2102907
BENDIGO	Heathcote	2102906
BENDIGO	Heathcote	2102905
BENDIGO	Heathcote	2102904
BENDIGO	Heathcote	2102903
BENDIGO	Heathcote	2102902
BENDIGO	Heathcote	2102901
BALLARAT	Daylesford	2101125
BALLARAT	Daylesford	2101124
BALLARAT	Daylesford	2101123
BALLARAT	Daylesford	2101122
BALLARAT	Daylesford	2101121
BALLARAT	Daylesford	2101120
BALLARAT	Daylesford	2101119
BALLARAT	Daylesford	2101118
BALLARAT	Daylesford	2101117
BALLARAT	Daylesford	2101116
BALLARAT	Daylesford	2101115
BALLARAT	Daylesford	2101114
BALLARAT	Daylesford	2101113
BALLARAT	Daylesford	2101112
BALLARAT	Daylesford	2101111
BALLARAT	Daylesford	2101110
BALLARAT	Daylesford	2101109

BALLARAT	Daylesford	2101108
BALLARAT	Daylesford	2101107
BALLARAT	Daylesford	2101106
BALLARAT	Daylesford	2101105
BALLARAT	Daylesford	2101104
BALLARAT	Daylesford	2101103
BALLARAT	Daylesford	2101102
BALLARAT	Daylesford	2101101

Bendigo

Indication of SAs moving from Wannan and Murray to Bendigo

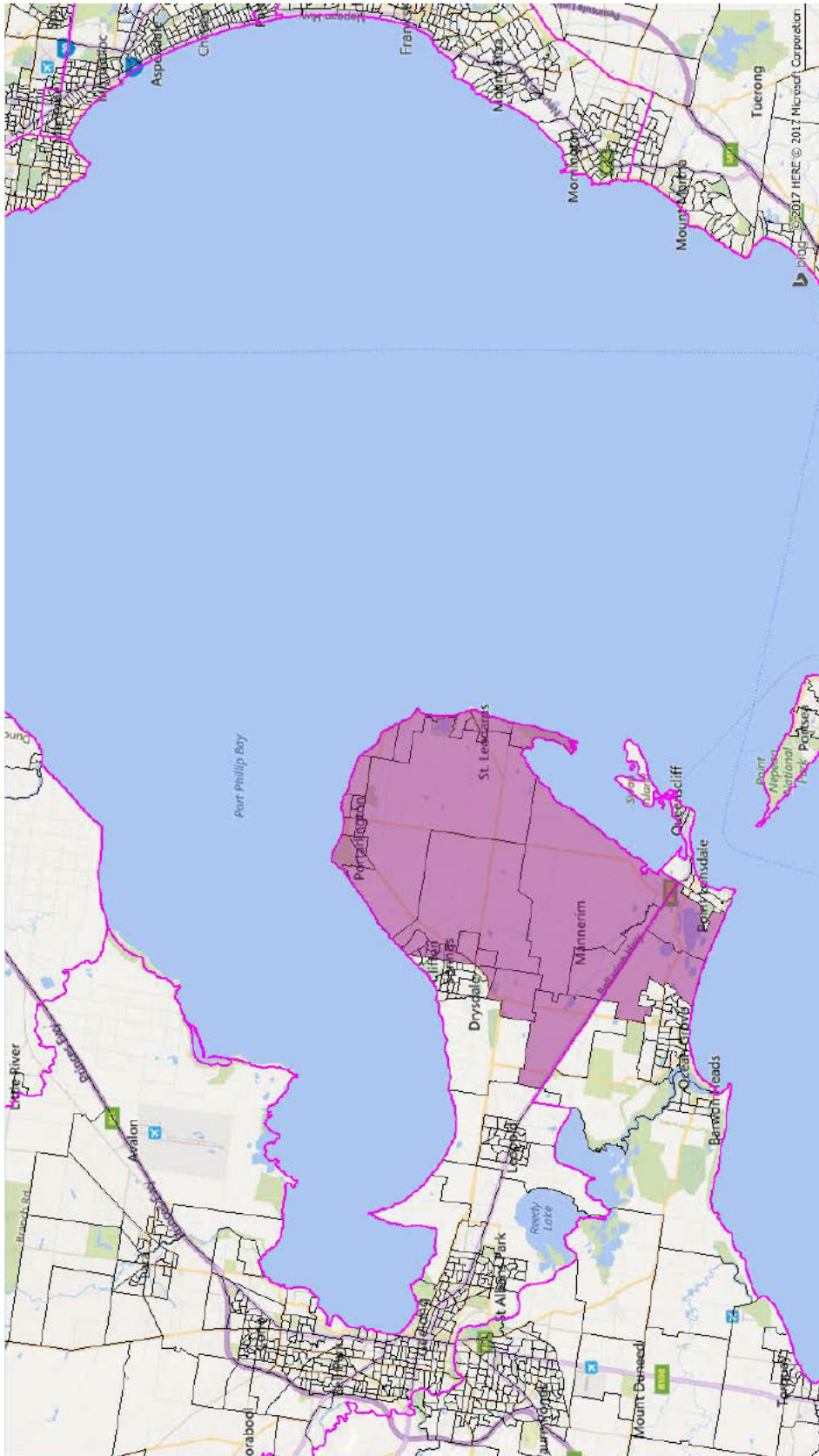


Division	SA2 Name	SA1 Code
WANNON	Maryborough Region	2101715
WANNON	Maryborough Region	2101714
WANNON	Maryborough Region	2101713
WANNON	Maryborough Region	2101712
WANNON	Maryborough Region	2101711
WANNON	Maryborough Region	2101710
WANNON	Maryborough Region	2101709
WANNON	Maryborough Region	2101708
WANNON	Maryborough Region	2101707
WANNON	Maryborough Region	2101706
WANNON	Maryborough Region	2101705
WANNON	Maryborough Region	2101704
WANNON	Maryborough Region	2101703
WANNON	Maryborough Region	2101702
WANNON	Maryborough Region	2101701
WANNON	Maryborough (Vic.)	2101621
WANNON	Maryborough (Vic.)	2101620
WANNON	Maryborough (Vic.)	2101619
WANNON	Maryborough (Vic.)	2101618
WANNON	Maryborough (Vic.)	2101617
WANNON	Maryborough (Vic.)	2101616
WANNON	Maryborough (Vic.)	2101615
WANNON	Maryborough (Vic.)	2101614
WANNON	Maryborough (Vic.)	2101613
WANNON	Maryborough (Vic.)	2101612
WANNON	Maryborough (Vic.)	2101611
WANNON	Maryborough (Vic.)	2101610
WANNON	Maryborough (Vic.)	2101609
WANNON	Maryborough (Vic.)	2101608
WANNON	Maryborough (Vic.)	2101607
WANNON	Maryborough (Vic.)	2101606
WANNON	Maryborough (Vic.)	2101605
WANNON	Maryborough (Vic.)	2101604
WANNON	Maryborough (Vic.)	2101603
WANNON	Maryborough (Vic.)	2101602
WANNON	Maryborough (Vic.)	2101601
MURRAY	Loddon	2103322
MURRAY	Loddon	2103307
MURRAY	Loddon	2103303
MURRAY	Loddon	2103302
MURRAY	Loddon	2103301
MURRAY	Bendigo Region - South	2102606
MURRAY	Bendigo Region - North	2103210
MURRAY	Bendigo Region - North	2103209

MURRAY	Bendigo Region - North	2103207
MURRAY	Bendigo Region - North	2103204

Corangamite

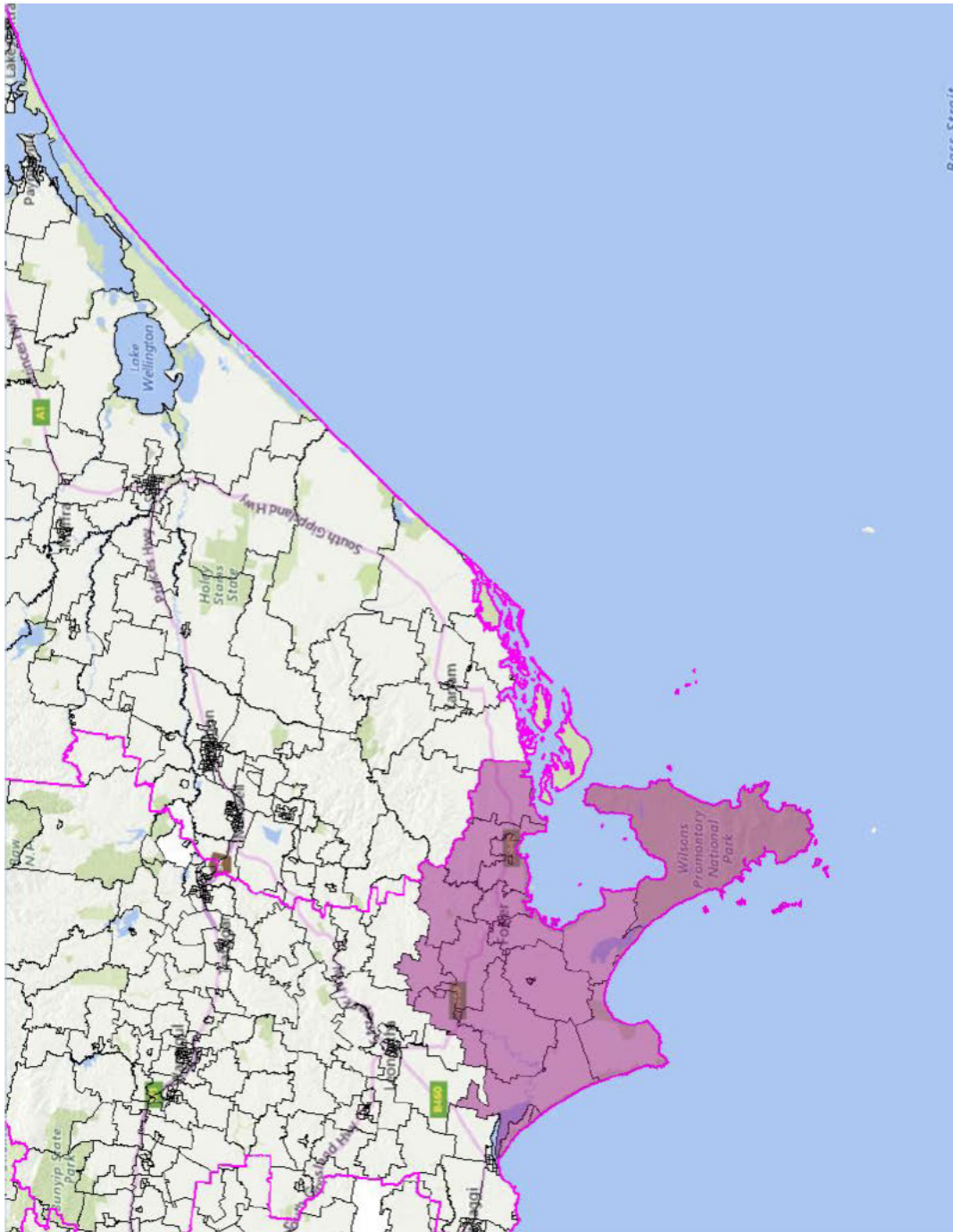
Indication of SAs moving from Corio to Corangamite



Division	SA2 Name	SA1 Code
CORIO	Queenscliff	2105211
CORIO	Portarlington	2105117
CORIO	Portarlington	2105116
CORIO	Portarlington	2105115
CORIO	Portarlington	2105114
CORIO	Portarlington	2105113
CORIO	Portarlington	2105112
CORIO	Portarlington	2105111
CORIO	Portarlington	2105110
CORIO	Portarlington	2105109
CORIO	Portarlington	2105108
CORIO	Portarlington	2105107
CORIO	Portarlington	2105106
CORIO	Portarlington	2105105
CORIO	Portarlington	2105104
CORIO	Portarlington	2105103
CORIO	Portarlington	2105102
CORIO	Portarlington	2105101
CORIO	Ocean Grove - Barwon Heads	2105039
CORIO	Ocean Grove - Barwon Heads	2105037
CORIO	Clifton Springs	2104831
CORIO	Clifton Springs	2104825
CORIO	Clifton Springs	2104824
CORIO	Clifton Springs	2104823
CORIO	Clifton Springs	2104816
CORIO	Clifton Springs	2104815
CORIO	Clifton Springs	2104810
CORIO	Clifton Springs	2104808
CORIO	Clifton Springs	2104806
CORIO	Clifton Springs	2104805
CORIO	Clifton Springs	2104804
CORIO	Clifton Springs	2104803

Gippsland

Indication of SAs moving from McMillan to Gippsland



Division	SA2 Name	SA1 Code
MCMILLAN	Wilson's Promontory	2109201
MCMILLAN	Foster	2108725
MCMILLAN	Foster	2108724
MCMILLAN	Foster	2108723
MCMILLAN	Foster	2108722
MCMILLAN	Foster	2108721
MCMILLAN	Foster	2108720
MCMILLAN	Foster	2108719
MCMILLAN	Foster	2108718
MCMILLAN	Foster	2108717
MCMILLAN	Foster	2108716
MCMILLAN	Foster	2108715
MCMILLAN	Foster	2108714
MCMILLAN	Foster	2108713
MCMILLAN	Foster	2108712
MCMILLAN	Foster	2108711
MCMILLAN	Foster	2108710
MCMILLAN	Foster	2108709
MCMILLAN	Foster	2108708
MCMILLAN	Foster	2108707
MCMILLAN	Foster	2108706
MCMILLAN	Foster	2108705
MCMILLAN	Foster	2108704
MCMILLAN	Foster	2108703
MCMILLAN	Foster	2108702
MCMILLAN	Foster	2108701