



**PROPOSED NAMES AND BOUNDARIES OF COMMONWEALTH ELECTORAL DIVISIONS IN VICTORIA**

The Redistribution Committee for Victoria has made its proposed redistribution of the federal electoral divisions for Victoria. This map shows the boundaries and names of the proposed electoral divisions.

Interested persons or organisations may lodge written objections against the proposed redistribution with the Electoral Commission. Objections must be received by the Electoral Commission before 6 pm (AEST) on the lodgement day.

Objections may be lodged via the AEC website at [www.aec.gov.au/vic-redistribution](http://www.aec.gov.au/vic-redistribution). Objections addressed to the Electoral Commission can also be submitted:

- by email to: [FedRedistribution.VIC@aec.gov.au](mailto:FedRedistribution.VIC@aec.gov.au)
- by fax to: 02 6293 7664
- by mail to: Victorian Redistribution Secretariat, Australian Electoral Commission, Locked Bag 4007, Canberra ACT 2601

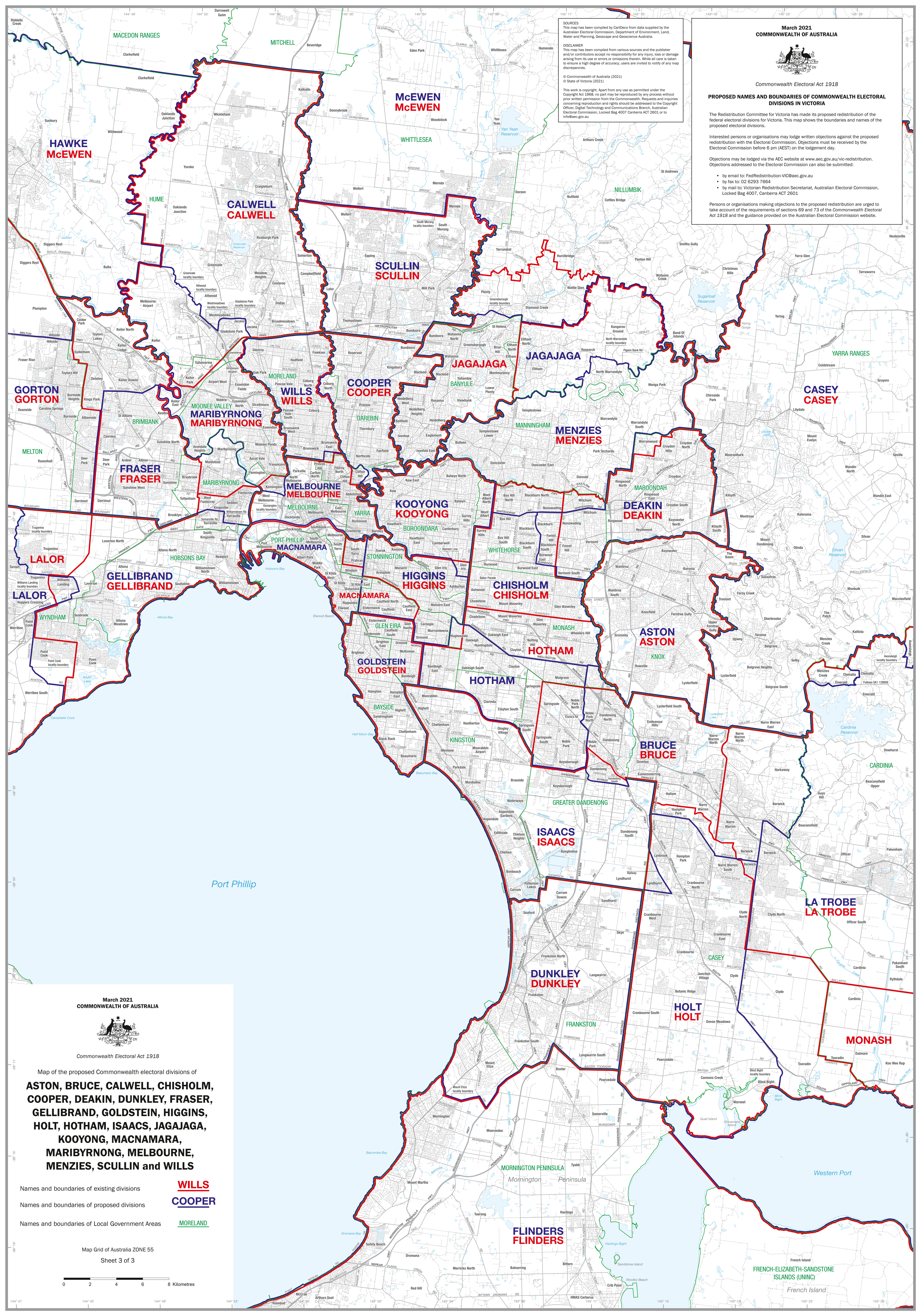
Persons or organisations making objections to the proposed redistribution are urged to take account of the requirements of sections 69 and 73 of the Commonwealth Electoral Act 1918 and the guidance provided on the Australian Electoral Commission website.

**SOURCES**  
This map has been compiled by CartDeo from data supplied by the Australian Electoral Commission, Department of Environment, Land, Water and Planning, Geoscape and Geoscience Australia.

**DISCLAIMER**  
This map has been compiled from various sources and the publisher and/or contributors accept no responsibility for any loss or damage arising from its use or errors or omissions therein. While all care is taken to ensure a high degree of accuracy, users are invited to notify of any map discrepancies.

© Commonwealth of Australia (2021)  
© State of Victoria (2021)

This work is copyright. Apart from any use as permitted under the Copyright Act 1968, no part may be reproduced by any process without prior written permission from the Commonwealth. Requests and inquiries concerning reproduction and rights should be addressed to the Copyright Officer, Digital Technology and Communications Branch, Australian Electoral Commission, Locked Bag 4007 Canberra ACT 2601 or [info@aec.gov.au](mailto:info@aec.gov.au)



Map of the proposed Commonwealth electoral divisions of  
**ASTON, BRUCE, CALWELL, CHISHOLM,  
 COOPER, DEAKIN, DUNKLEY, FRASER,  
 GELLIBRAND, GOLDSTEIN, HIGGINS,  
 HOLT, HOTHAM, ISAACS, JAGAJAGA,  
 KOOYONG, MACNAMARA,  
 MARIBYRNONG, MELBOURNE,  
 MENZIES, SCULLIN and WILLS**

Names and boundaries of existing divisions

**WILLS**

Names and boundaries of proposed divisions

**COOPER**

Names and boundaries of Local Government Areas

**MORELAND**

Map Grid of Australia ZONE 55

Sheet 3 of 3

