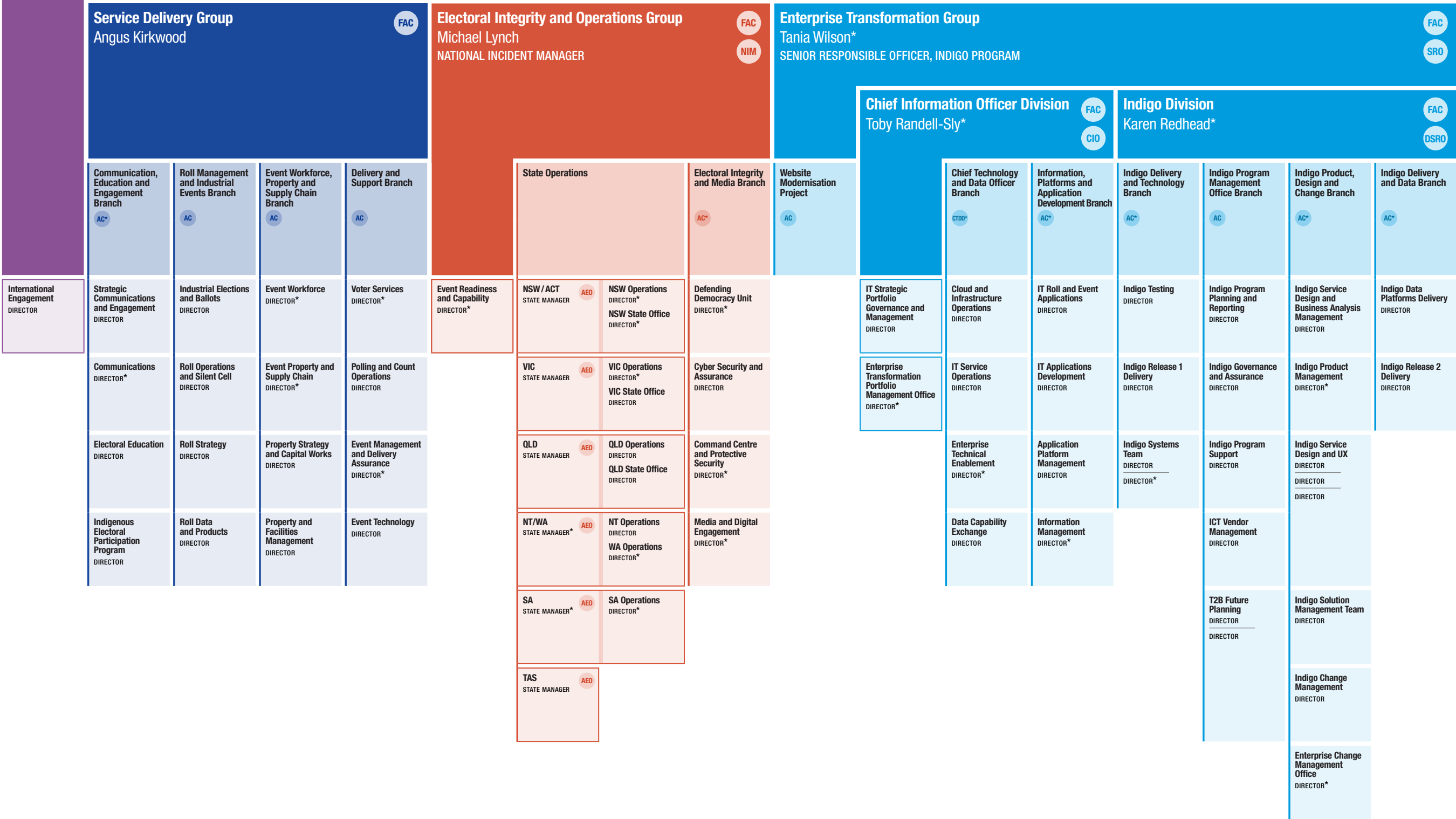


**Electoral Commissioner** Jeff Pope  
**CoS** Alex Famelis\* | **PA** Kristen Wild

**Deputy Electoral Commissioner** Kath Gleeson\*  
**NATIONAL ELECTION MANAGER**  
**EO** Anastasia Batten\* | **EA** Priscilla Vosa\*



**Chief Operating Officer** Rachel Houghton  
**SENIOR RESPONSIBLE OFFICER, FUNDING AND DISCLOSURE (FAD) REFORM PROGRAM**  
**EO** Rachel Dieckmann\* | **EA** Bec Silva

