

February 2016  
COMMONWEALTH OF AUSTRALIA



Commonwealth Electoral Act 1918  
State of New South Wales

Map of the  
FEDERAL ELECTORAL DIVISION OF

# RIVERINA

Name and Boundary of  
Electoral Division

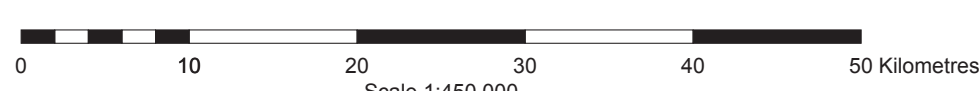
**RIVERINA**

Names and Boundaries of  
adjoining Electoral Divisions

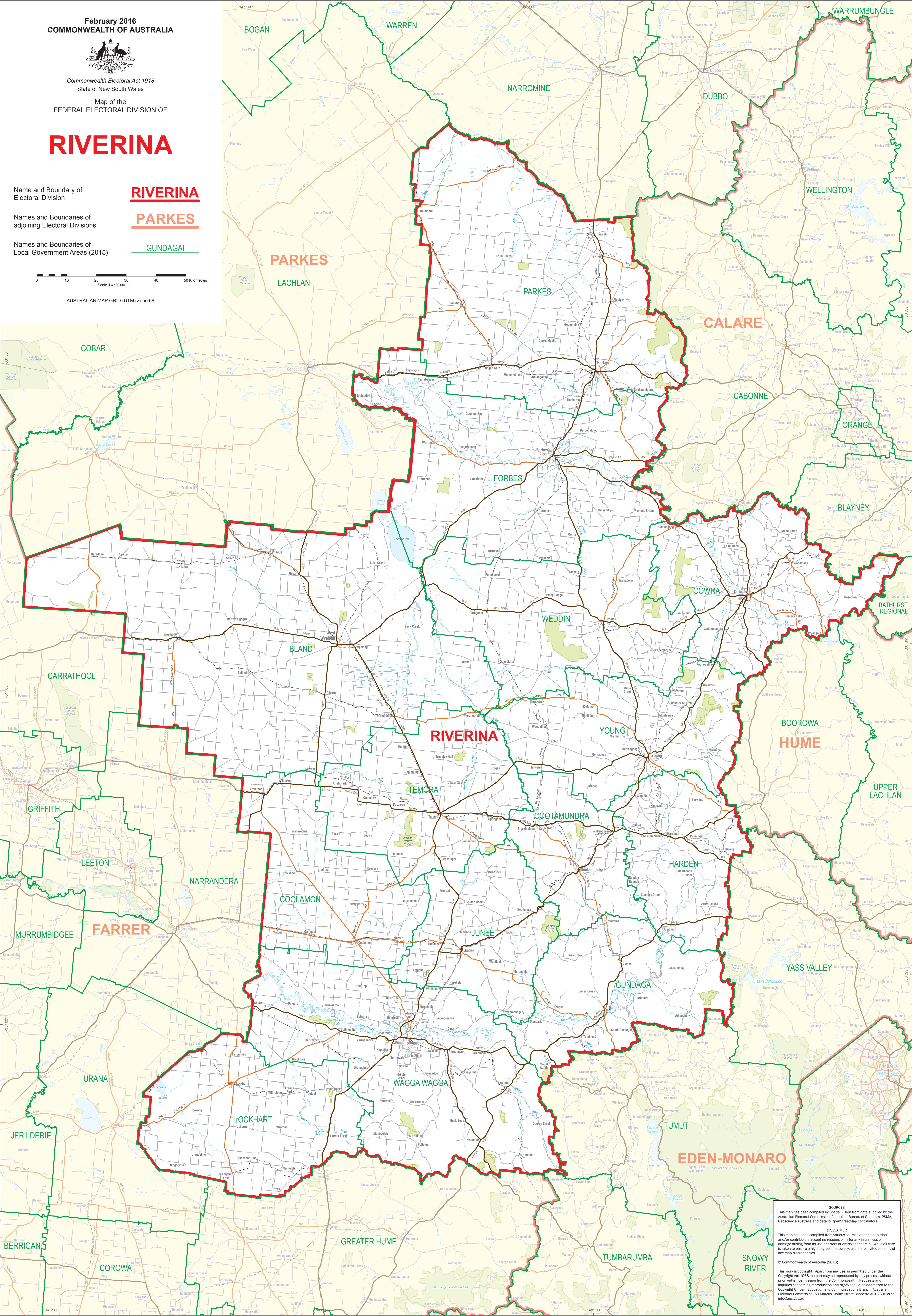
**PARKES**

Names and Boundaries of  
Local Government Areas (2015)

**GUNDAGAI**



AUSTRALIAN MAP GRID (UTM) Zone 56



**SOURCES**  
This map has been compiled by Spatial Vision from data supplied by the Australian Electoral Commission, Australian Bureau of Statistics, PSMA, Geoscience Australia and data © OpenStreetMap contributors.

**DISCLAIMER**  
This map has been compiled from various sources and the publisher and/or contributors accept no responsibility for any injury, loss or damage arising from its use or errors or omissions therein. While all care is taken to ensure a high degree of accuracy, users are invited to notify of any map discrepancies.

© Commonwealth of Australia (2016)  
This work is copyright. Apart from any use as permitted under the Copyright Act 1968, no part may be reproduced by any process without prior written permission from the Commonwealth. Requests and inquiries concerning reproduction and rights should be addressed to the Copyright Officer, Education and Communications Branch, Australian Electoral Commission, 50 Marcus Clarke Street Canberra ACT 2600 or to [info@aec.gov.au](mailto:info@aec.gov.au)